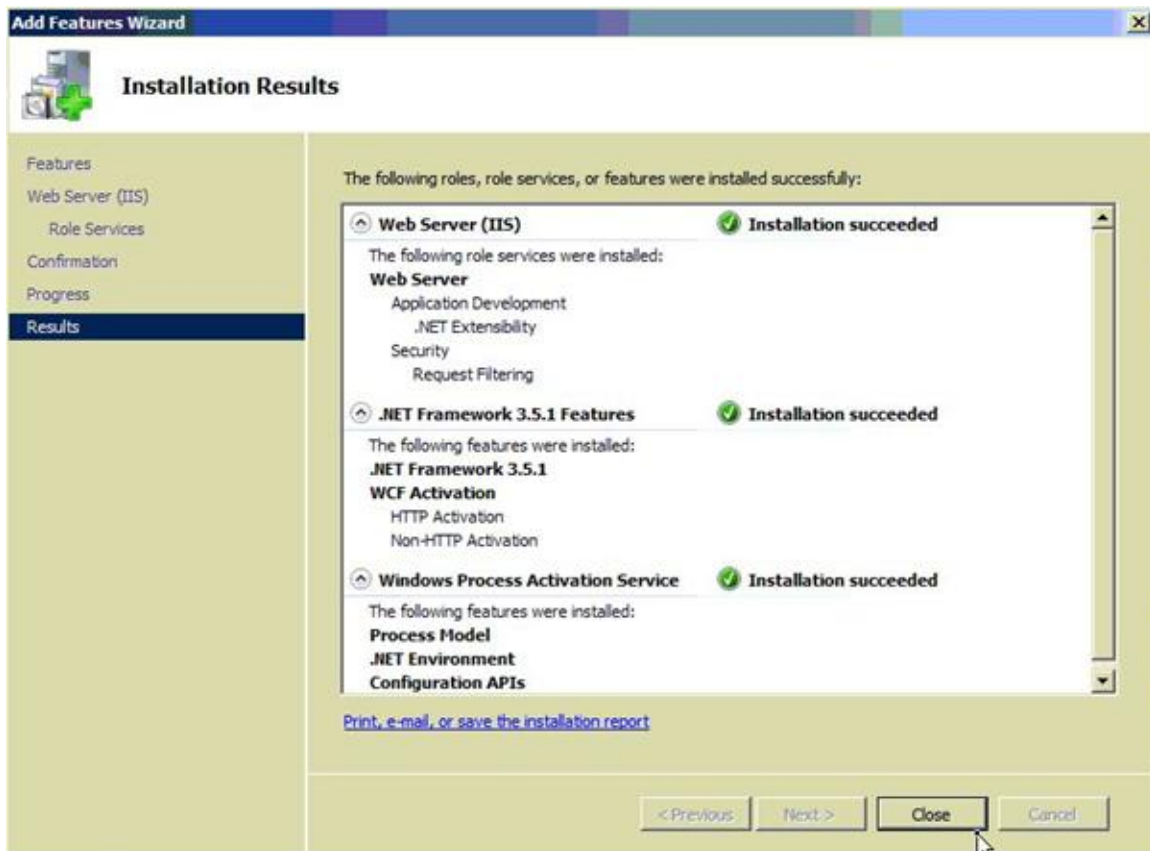



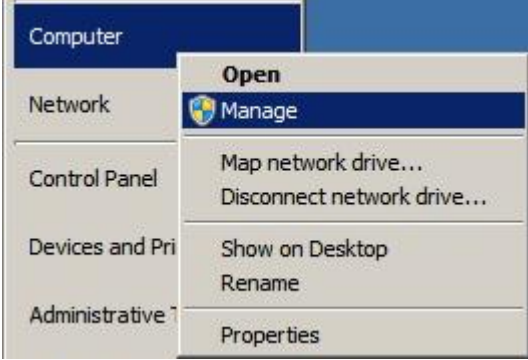
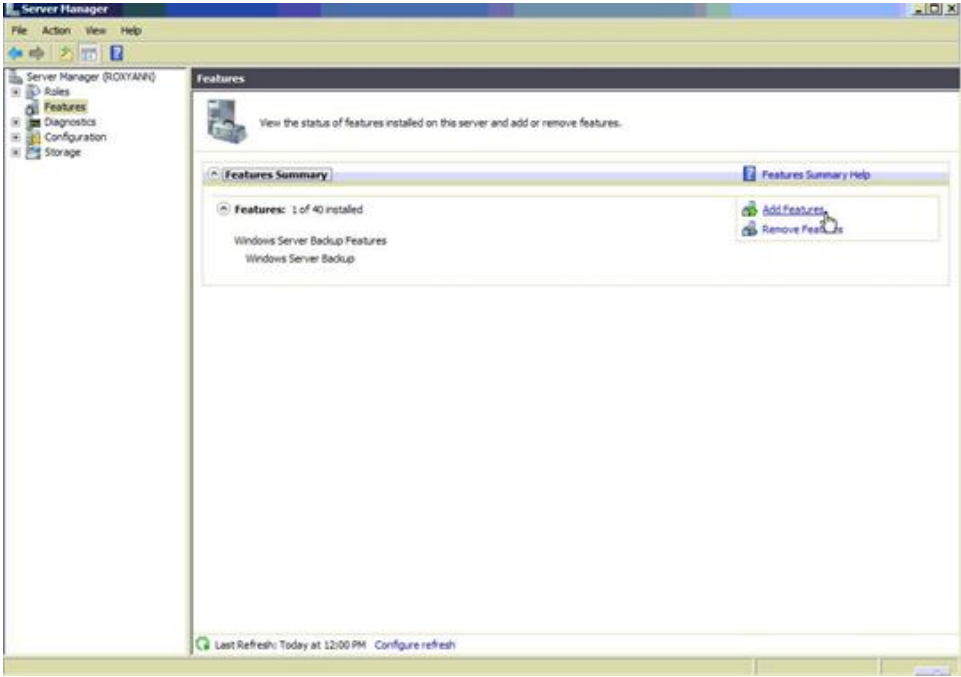
Installing .Net in Windows Server 2008 (Required for CRE/RPE)

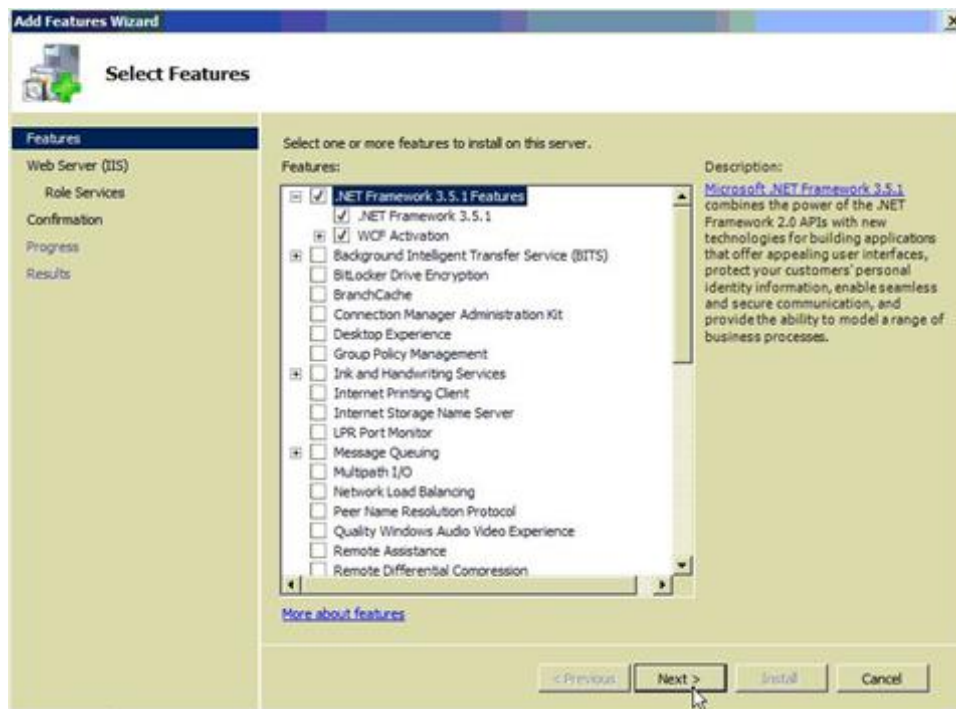


In order for CRE/RPE to work correctly on Windows Server 2008 all the .Net Frameworks will need to be installed.

Please, follow the instructions in this document to ensure that they are installed.

Manually installing features in Windows Server 2008

	<p>1. Select Start.</p>
	<p>2. Right-click on My Computer and select Manage.</p>
	<p>3. Select Features.</p> <p>4. Select Add Features.</p>



5. We need to install the following in order for CRE/RPE to operate correctly:

- **.NET Framework 3.5.1 Features**
- **.NET Framework 3.5.1**
- **WCF Activation**

6. Select **Next**.

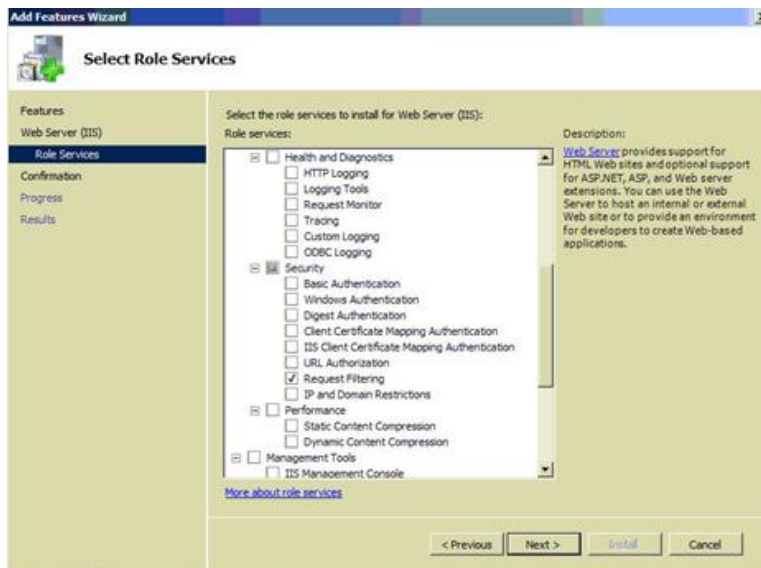
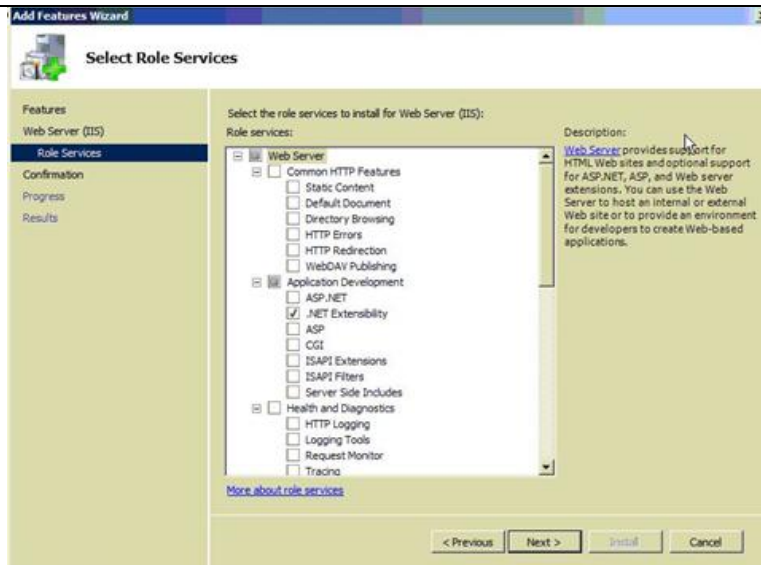
Please use the image above as a reference for what needs to be installed.



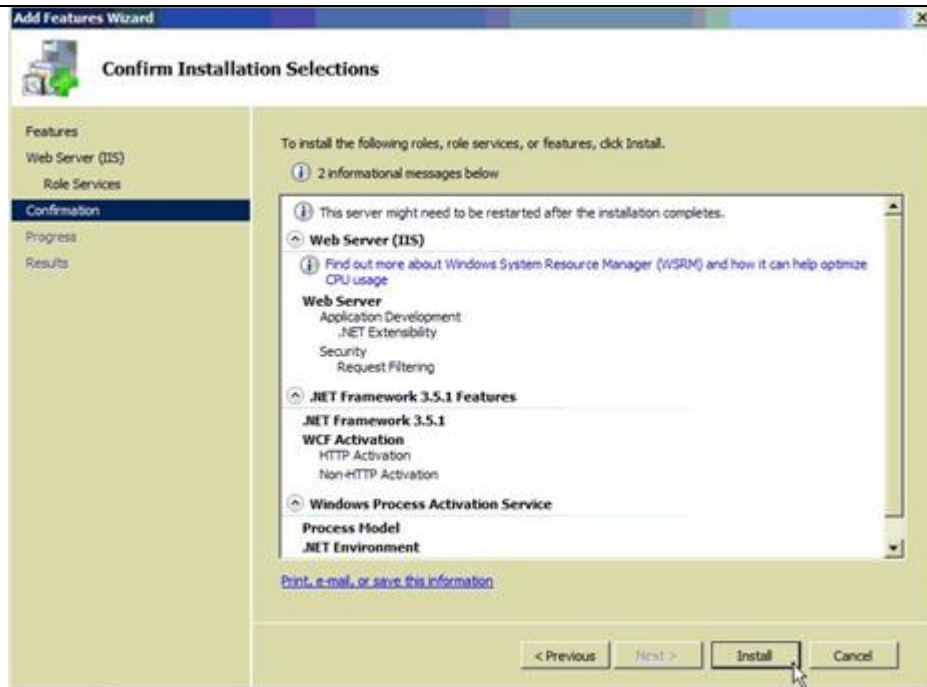
7. You will be prompted to install required features and services (if they have already not been installed). If prompted select **Add Required Role Services**.



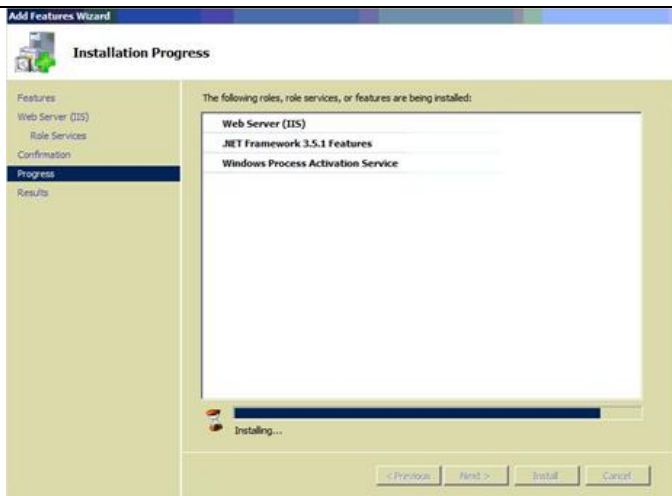
8. Select **Next**.



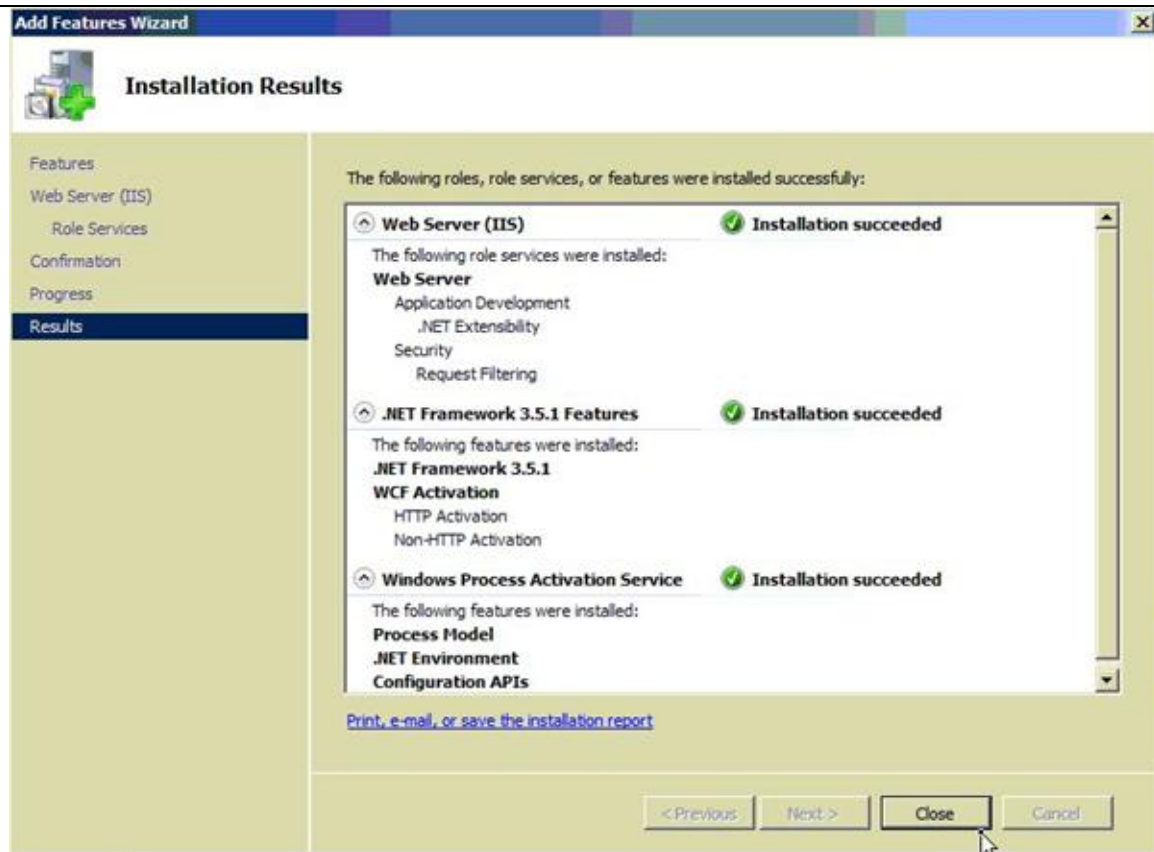
9. The above images show all the required Role Services that are needed for the .NET 3.5.1 install.



10. At the **Confirm Installation Selections** window select **Install**.



11. The features will then be installed.



12. After the installation has completed you will receive confirmation at the Installation Results window.

13. Select **Close**.