

One Blue Hill Plaza, 16th Floor, PO Box 1546
Pearl River, NY 10965
1-800-PC-AMERICA, 1-800-722-6374
(Voice) 845-920-0800 (Fax) 845-920-0880

Setting Up the Verifone 1000SE USB Pinpad in Windows 7 64BIT

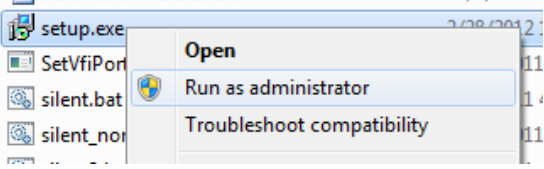
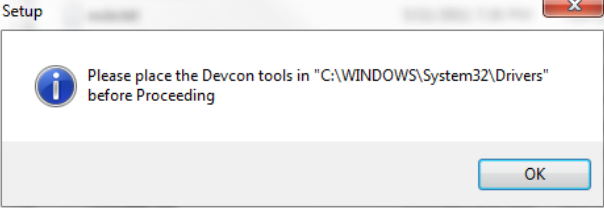
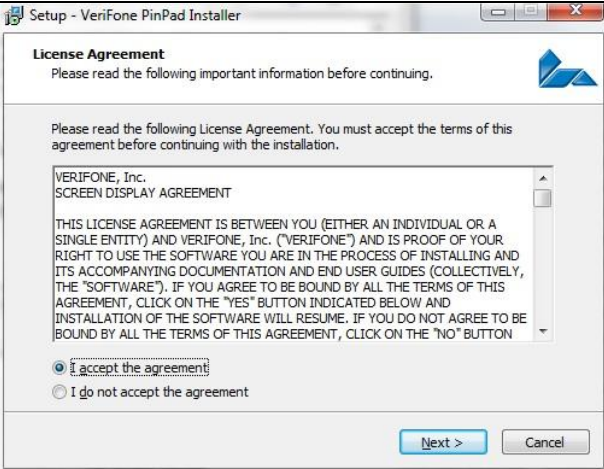


This document explains how to connect the Verifone USB 1000SE Pinpad (P/N P003-190-02-WWE) to a computer via USB and configure CRE or RPE to communicate with it.

Installing drivers for the USB-to-Serial cable used with the VeriFone Pinpad 1000SE

Before continuing, download the driver file for the pinpad from the location below and then extract it.

http://download2.pcamerica.com/drivers/8/Manufacturer/VeriFone/VeriFoneUSBUARTDriver_PP_Qx_Win8.zip

	<ol style="list-style-type: none">1. After downloading the driver, Right-click on the Setup.exe and select Run as administrator.
	<ol style="list-style-type: none">2. Click OK to this message.
	<ol style="list-style-type: none">3. Select I accept the agreement and then select Next.4. The command prompt will flash to install the files. The driver is now installed.

Connecting the VeriFone Pinpad 1000SE to a computer via USB

To connect the 1000SE to a computer via USB, you will need the following cable:

Serial Number: WCL115002-A

Manufacturer Part Number: P003-190-02



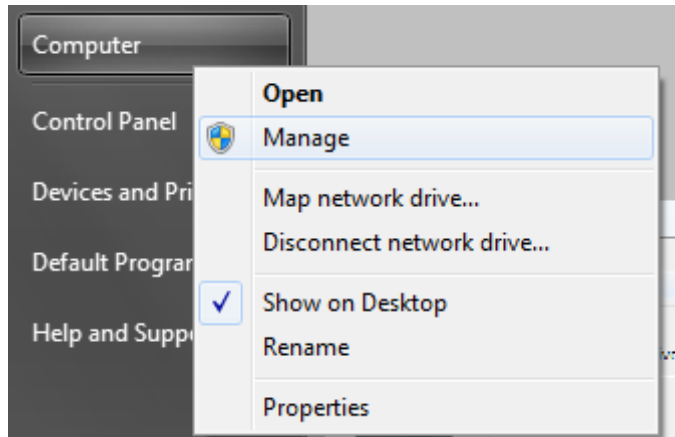
1. Plug the RJ-11 (Phone Jack) end of the cable into the back of the pinpad.



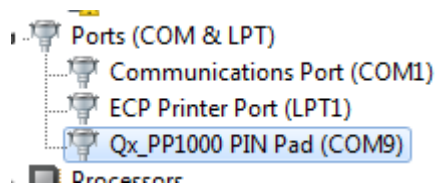
2. Plug the USB end of the cable into an available USB port on your computer.



3. Select **Start**.



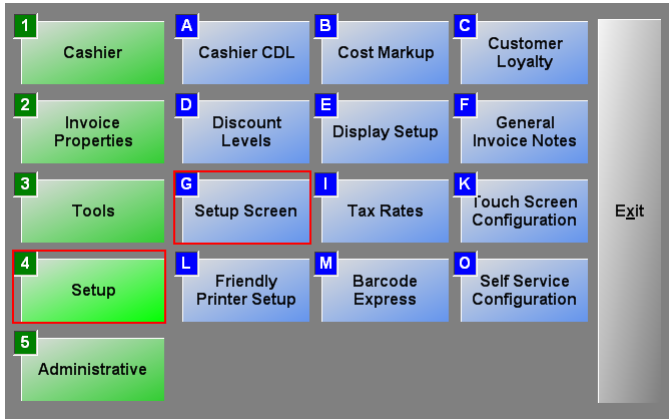
4. Right-Click **Computer** and select **Manage**.



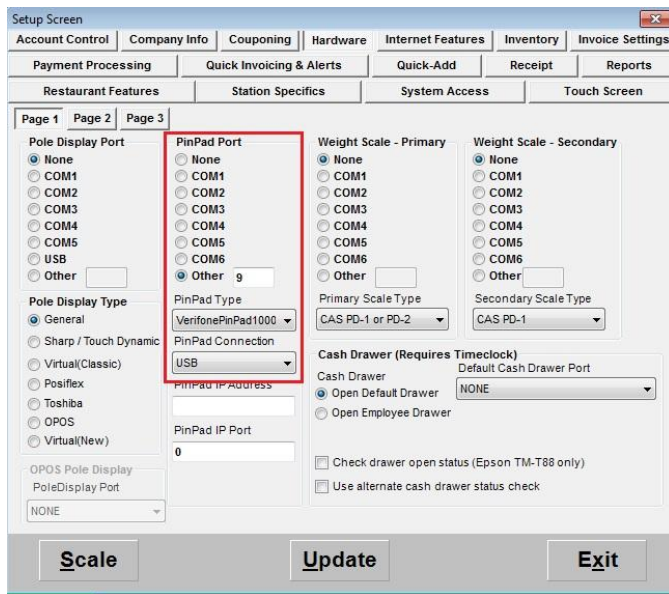
5. Select **Device Manager** the select **Ports (COM & LPT)**. Under ports, you will see **Qx_PP1000 PIN Pad (COM9)**.

Configuring CRE or RPE to communicate with the VeriFone Pinpad 1000SE

To configure CRE or RPE to communicate with the 1000SE, start CRE or RPE, select **Manager**, provide the requested credentials, and follow these steps.



1. Select **Setup** and then **Setup Screen**.



2. Select the **Hardware** tab.
3. Select the COM port being used by the 1000SE using the COM port found in step 5 of the previous section (i.e. COM9).
4. Set the **PinPad Type** to **VeriFonePinPad1000**.
5. Set the **PinPad Connection** to **USB**.
6. Select **Update**.

Note: to test the pinpad you must have a credit card processor setup which you will setup in the setup screen. Please see: <http://faq.pcamerica.com/paymentprocessing> for more information.