

Setting Up the Verifone 1000SE USB Pinpad in Windows 7 32-Bit



This document explains how to connect the Verifone USB 1000SE Pinpad (P/N P003-190-02-WWE) to a computer via USB and configure CRE or RPE to communicate with it.

Connecting the VeriFone Pinpad 1000SE to a computer via USB

To connect the 1000SE to a computer via USB, you will need the following cable:

Serial Number: WCL115002-A

Manufacturer Part Number: P003-190-02



1. Plug the RJ-11 (Phone Jack) end of the cable into the back of the pinpad.



2. Plug the USB end of the cable into an available USB port on your computer.

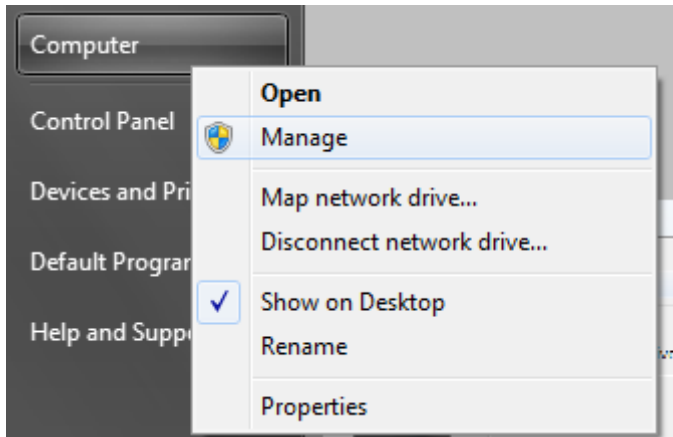
Installing drivers for the USB-to-Serial cable used with the VeriFone Pinpad 1000SE

After connecting the 1000SE to the computer, you will need to go to the device manager. Before continuing, download the driver file for the pinpad from the location below and then extract it.

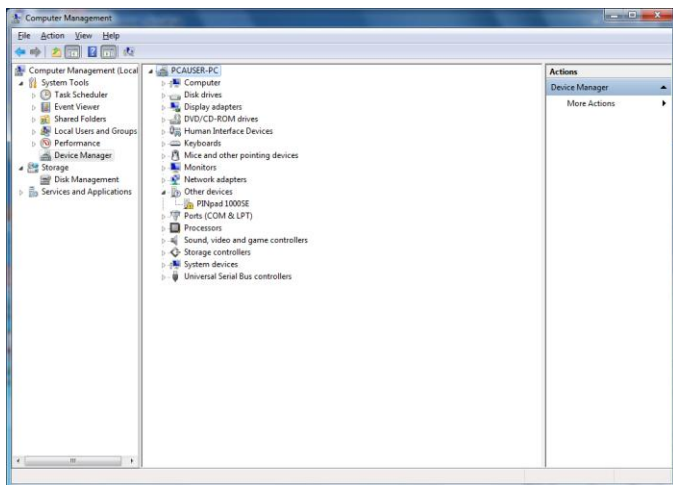
http://download2.pcamerica.com/drivers/Manufacturer/Verifone/Verifone_USB_1000SE.zip



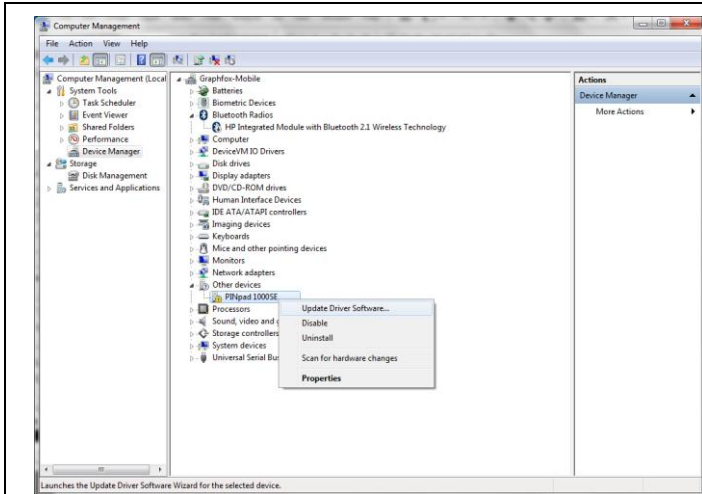
1. Select **Start**.



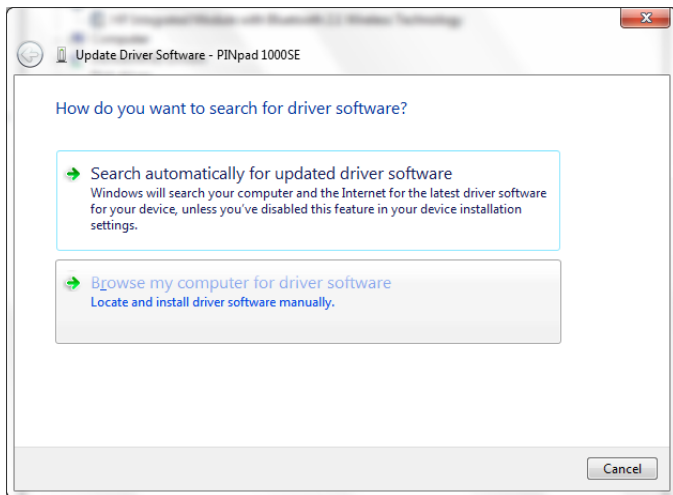
2. Right-Click **Computer** and select **Manage**.



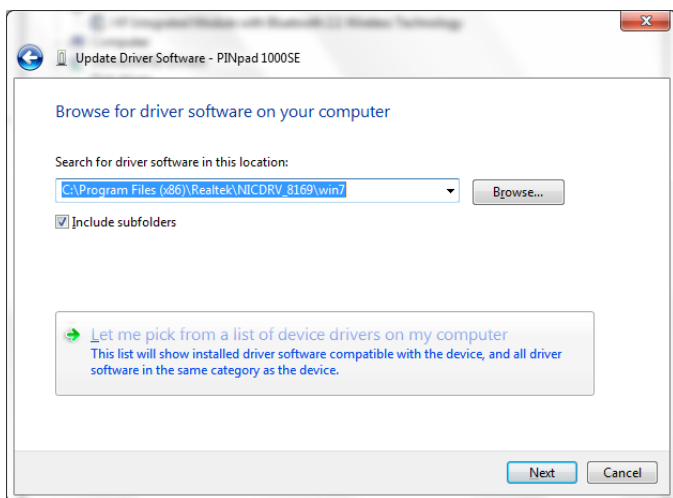
3. Select **Device Manager** under **Other Devices** you will see **PINpad 1000SE**.



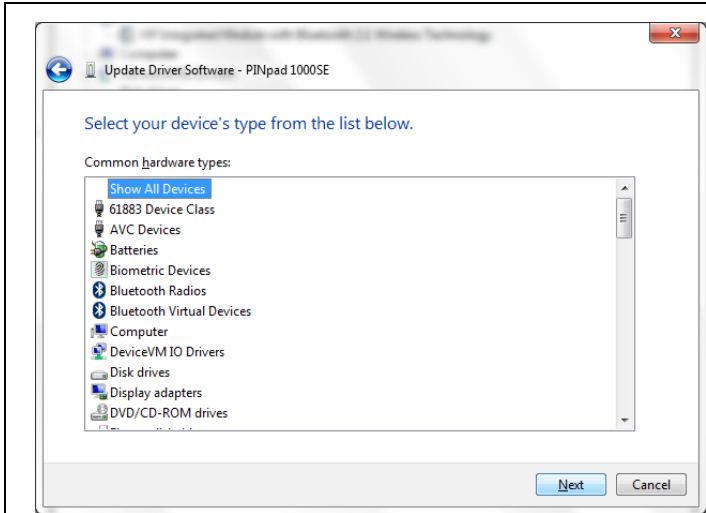
4. Right-click on **PINpad 1000SE** and select **Update Driver Software**.



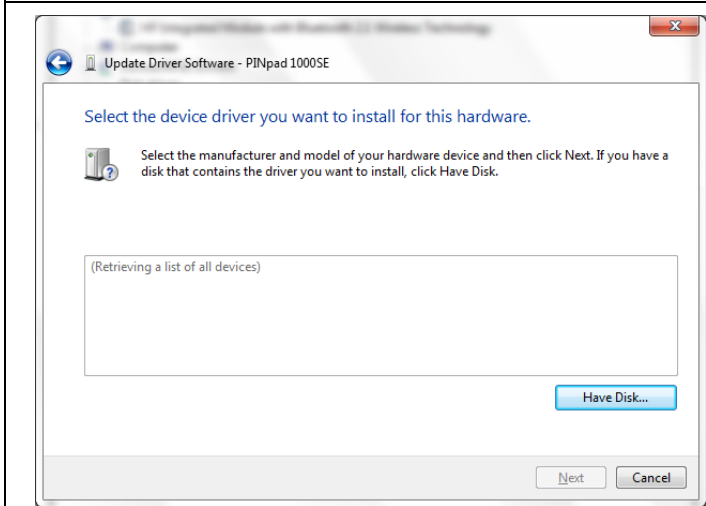
5. Select **Browse my computer** for driver software.



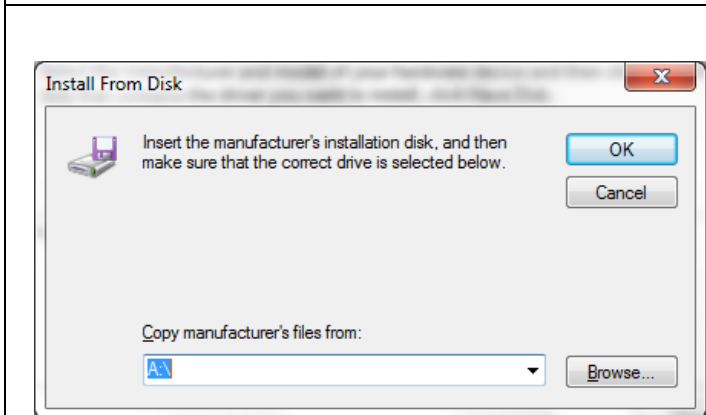
6. Select **Let me pick from a list of devices on my computer**.



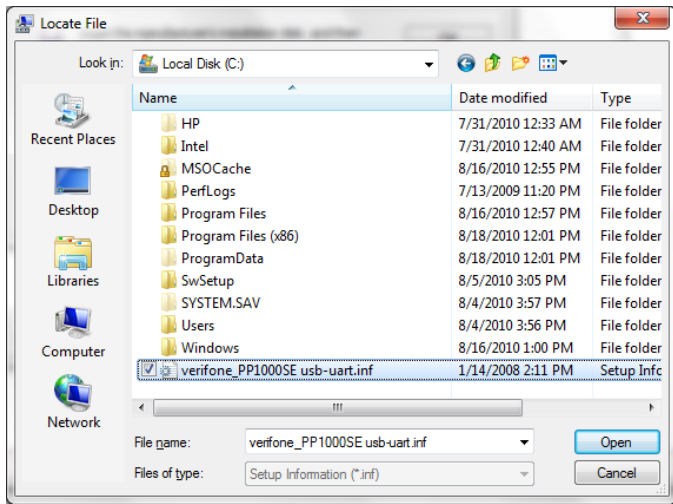
7. Select **Show all Devices**.
8. Select **Next**.



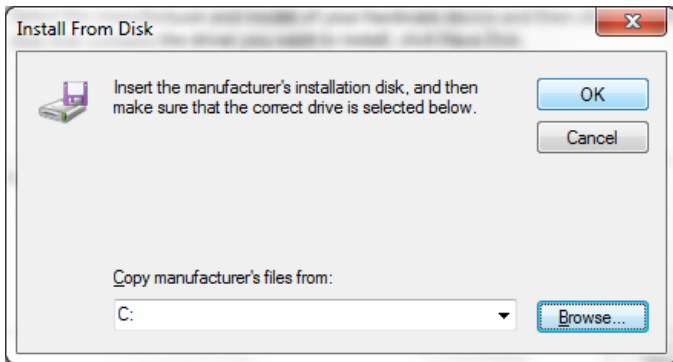
9. Select **Have Disk**.



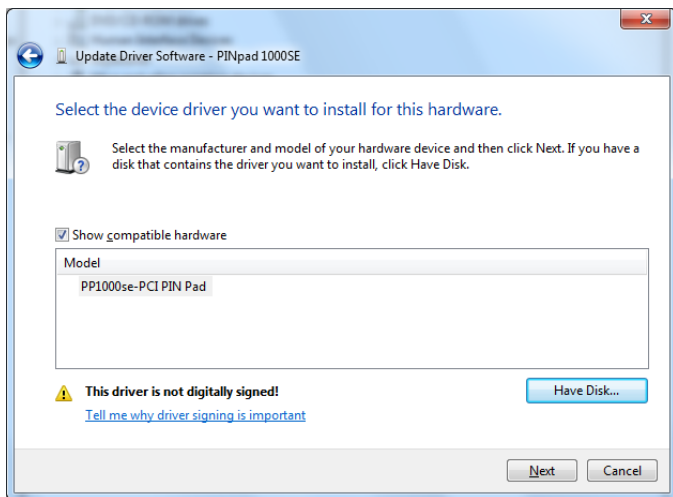
10. Select **Browse**.



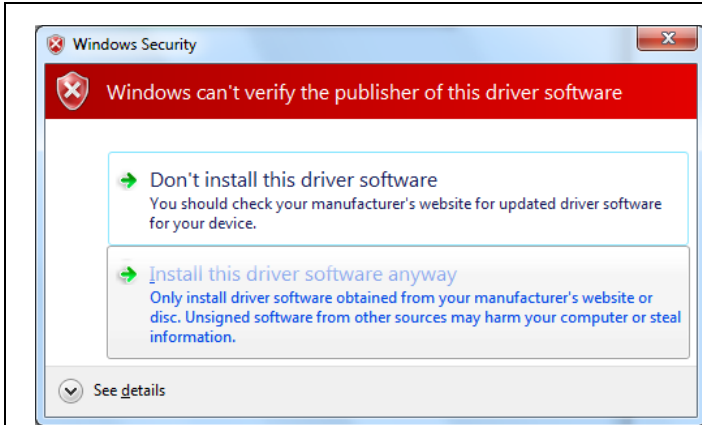
11. Select the folder that you extracted the driver files to and select the extracted file.
12. Select **Open**.



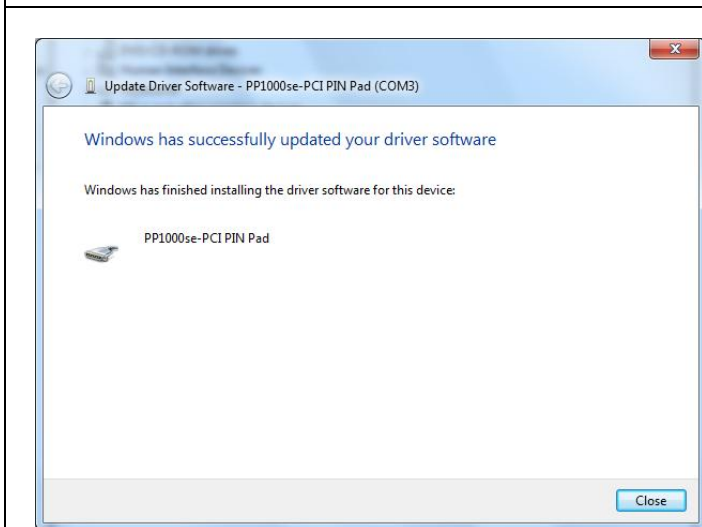
13. Select **OK**.



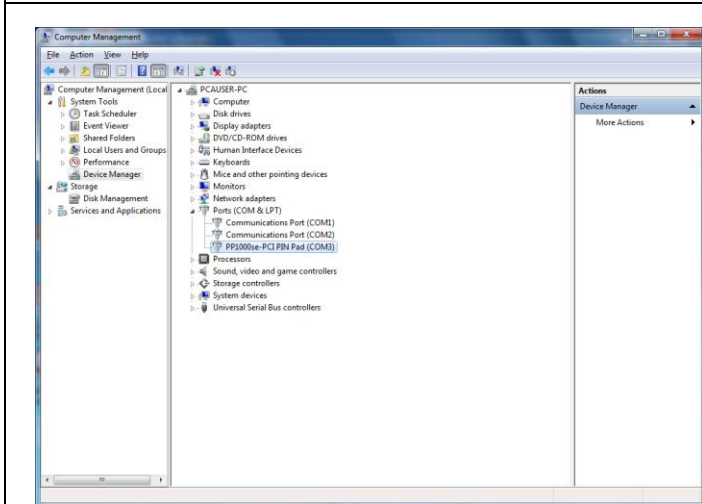
14. Select **Next**.



15. Select **Install this driver software anyway**.



16. Select **Close**.

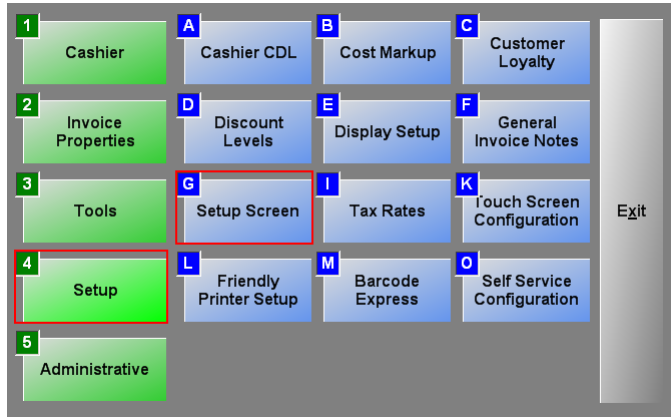


17. The pinpad should then move under the **Ports (COM & LPT)** section.

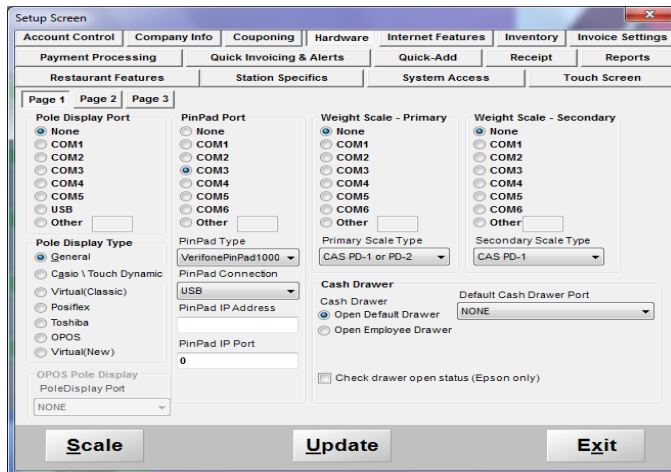
18. We will need to note what the COM port the **PP1000se-PCI Pin pad** is using (**COM3**).

Configuring CRE or RPE to communicate with the VeriFone Pinpad 1000SE

To configure CRE or RPE to communicate with the 1000SE, start CRE or RPE, select **Manager**, provide the requested credentials, and follow these steps.



1. Select **Setup** and then **Setup Screen**.



2. Select the **Hardware** tab.
3. Select the COM port being used by the 1000SE using the COM port found in step 18 of the previous section (i.e. COM3).
4. Set the **PinPad Type** to **VeriFonePinPad1000**.
5. Set the **PinPad Connection** to **USB**.
6. Select **Update**.

Note: to test the pinpad you must have a credit card processor setup which you will setup in the setup screen. Please see: <http://faq.pcamerica.com/paymentprocessing> for more information.