

*One Blue Hill Plaza, 16<sup>th</sup> Floor, PO Box 1546  
Pearl River, NY 10965  
1-800-PC-AMERICA, 1-800-722-6374  
(Voice) 845-920-0800 (Fax) 845-920-0880*

# Setting Up the Verifone 1000SE USB Pinpad in Windows XP/Vista



This document explains how to connect the Verifone USB 1000SE Pinpad (P/N P003-190-02-WWE) to a computer via USB and configure CRE or RPE to communicate with it.

## Connecting the VeriFone Pinpad 1000SE to a computer via USB

To connect the 1000SE to a computer via USB, you will need the following cable:

Serial Number: WCL115002-A

Manufacturer Part Number: P003-190-02



1. Plug the RJ-11 (Phone Jack) end of the cable into the back of the pinpad.



2. Plug the USB end of the cable into an available USB port on your computer.

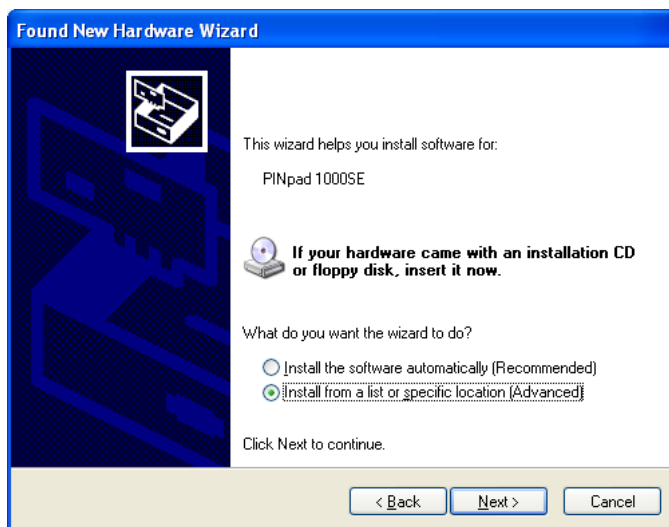
## Installing drivers for the USB-to-Serial cable used with the VeriFone Pinpad 1000SE

After connecting the 1000SE to the computer, the Found New Hardware wizard will appear. Before continuing, download the driver file for the pinpad from the location below and then extract it.

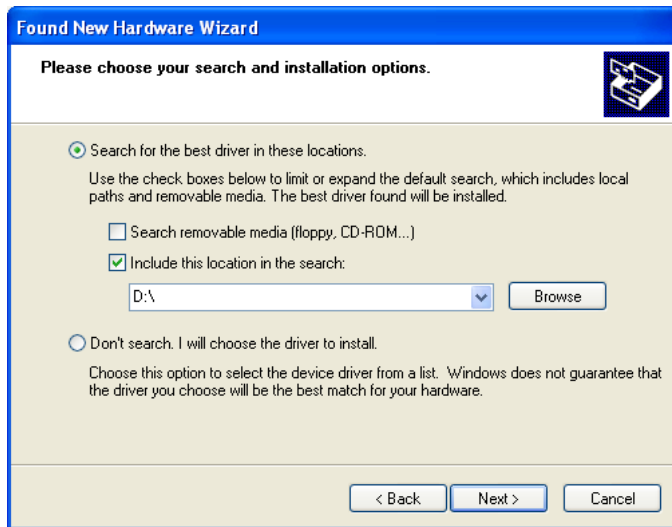
[http://download2.pcamerica.com/drivers/Manufacturer/Verifone/Verifone\\_USB\\_1000SE.zip](http://download2.pcamerica.com/drivers/Manufacturer/Verifone/Verifone_USB_1000SE.zip)



1. Select **No not at this time.**
2. Select **Next.**



3. Select **Install from a list or specific location (Advanced).**
4. Select **Next.**



5. Select **Search for the best driver in these locations.**
6. Check to **Include the location in this search:**
7. Select **Browse.**



8. Select the folder that you extracted the driver files to.
9. Select **OK.**





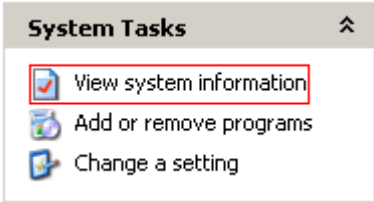

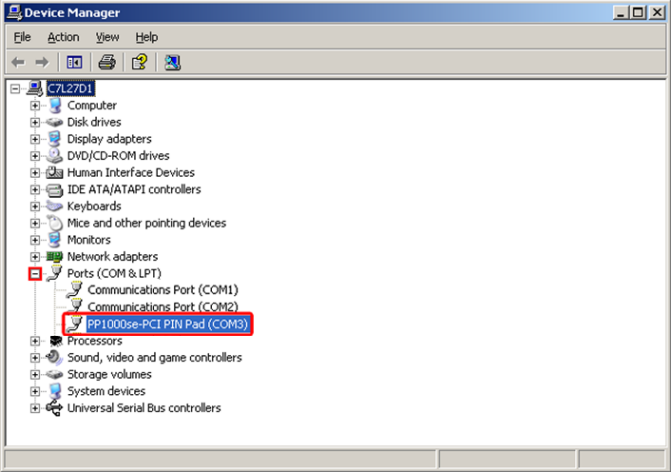
10. The driver will then be installed.



11. Select **Finish**.

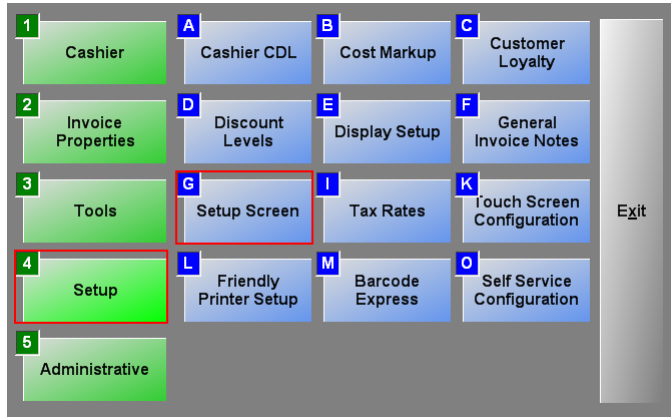
## Determining which COM port is being used by the USB-to-Serial cable

Even if the 1000SE is connected via USB, the computer thinks the 1000SE is connected to a serial (COM) port. To find out which COM port the computer has assigned to the 1000SE, follow these steps.

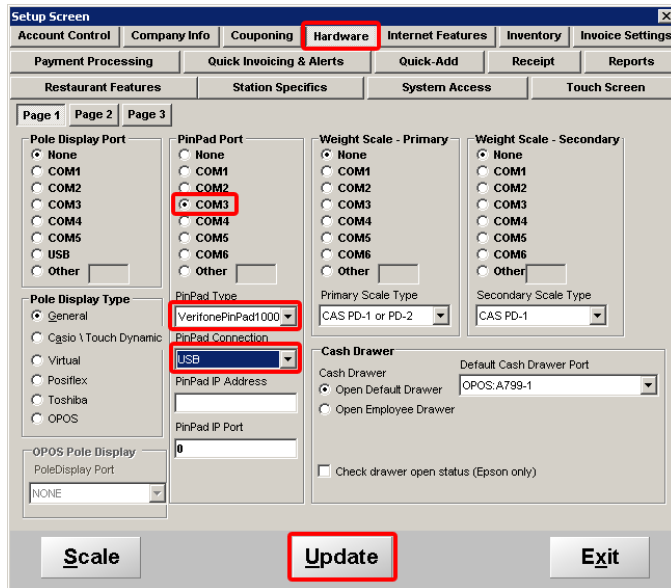
	1. Select <b>Start</b> .
	2. Select <b>My Computer</b> .
	3. Select <b>View system information</b> .
	4. Select the <b>Hardware</b> tab. 5. Select <b>Device Manager</b> .
	6. Expand <b>Ports (COM &amp; LPT)</b> . 7. Make a note of the COM port being used by the <b>PP1000se-PCI PIN Pad (COM3)</b> cable.

## Configuring CRE or RPE to communicate with the VeriFone Pinpad 1000SE

To configure CRE or RPE to communicate with the 1000SE, start CRE or RPE, select **Manager**, provide the requested credentials, and follow these steps.



1. Select **Setup** and then **Setup Screen**.



2. Select the **Hardware** tab.
3. Select the COM port being used by the 1000SE using the COM port found in step 7 of the previous section.
4. Set the **PinPad Type** to **VeriFonePinPad1000**.
5. Set the **PinPad Connection** to **USB**.
6. Select **Update**.

Note: to test the pinpad you must have a credit card processor setup which you will setup in the setup screen. Please see: <http://faq.pcamerica.com/paymentprocessing> for more information.