

One Blue Hill Plaza, 16th Floor, PO Box 1546

Pearl River, NY 10965

1-800-PC-AMERICA, 1-800-722-6374

(Voice) 845-920-0800 (Fax) 845-920-0880

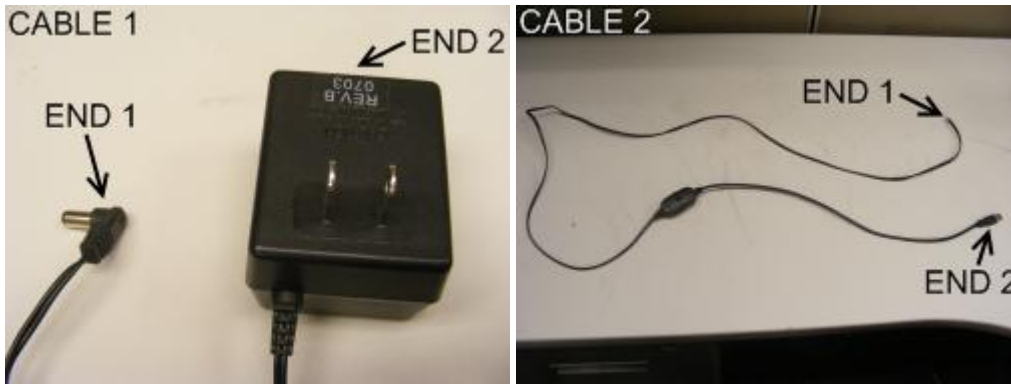
Verifone SC5000 Pinpad



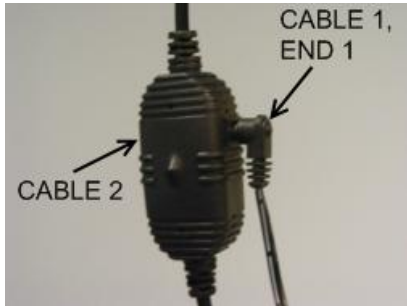
This document explains how to Install drivers for the Verifone Pinpad SC5000 and configure CRE or RPE to communicate with it.

Connecting the VeriFone Pinpad SC5000 to a computer via USB

To connect the SC5000 to a computer via USB, you will need the following cables:



1. Plug **end 1** of **cabl e 2** into the Verifone SC5000.



2. Plug **end 1** of **cabl e 1** into **cabl e 2**.
3. Plug **end 2** of **cabl e 1** into a power outlet.



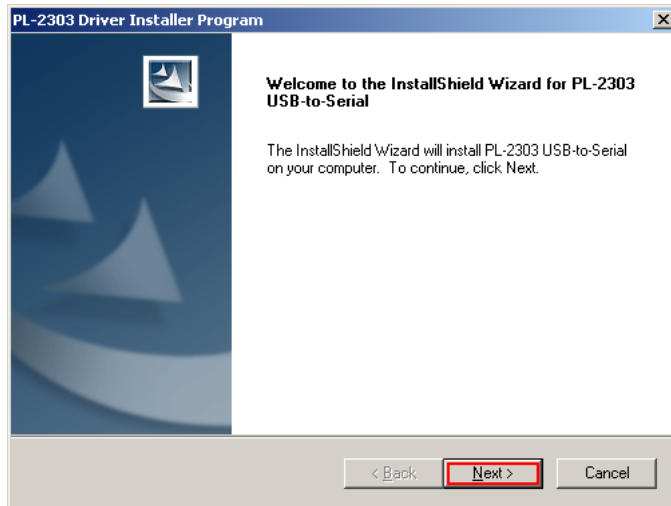
4. Plug **end 2** of **cabl e 2** into the computer.

Installing drivers for the USB-to-Serial cable used with the VeriFone Pinpad SC5000

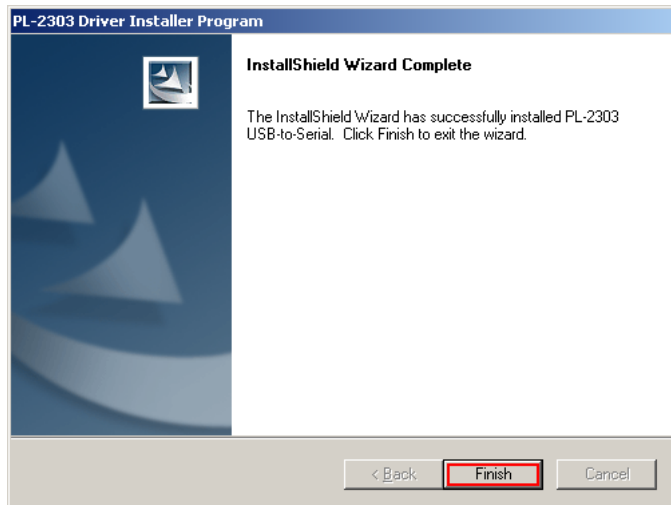
If the SC5000 is connected to the computer via USB, special drivers will need to be installed. Double-click **PL2303_Prolific_DriverInstaller_v10518.exe** and follow these steps.

Note: You can download the USB-to-Serial cable driver from:

http://download2.pcamerica.com/drivers/PL2303_Prolific_DriverInstaller_v10518.zip





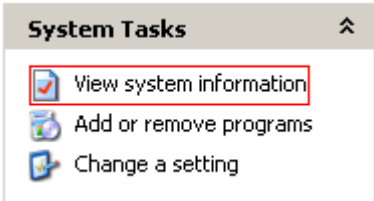

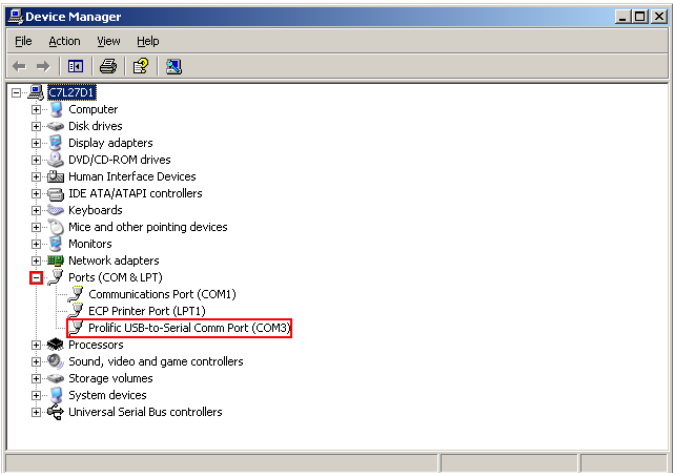
1. Select **Next**.



2. Select **Finish**.

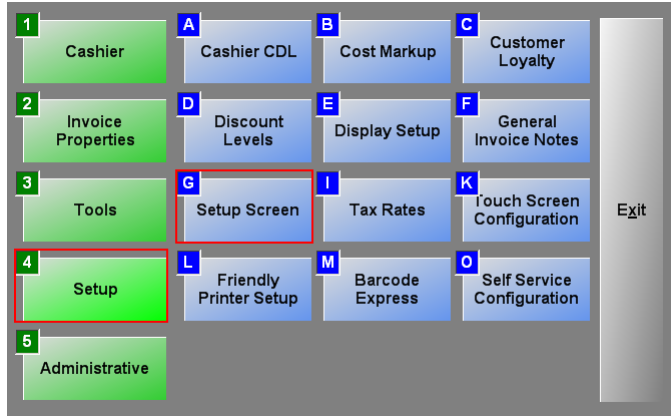
Determining which COM port is being used by the USB-to-Serial cable

Even if the USB-to-Serial cable is used, the computer thinks the SC5000 is connected to a COM port. To find out which COM port the computer has assigned to the SC5000, follow these steps.

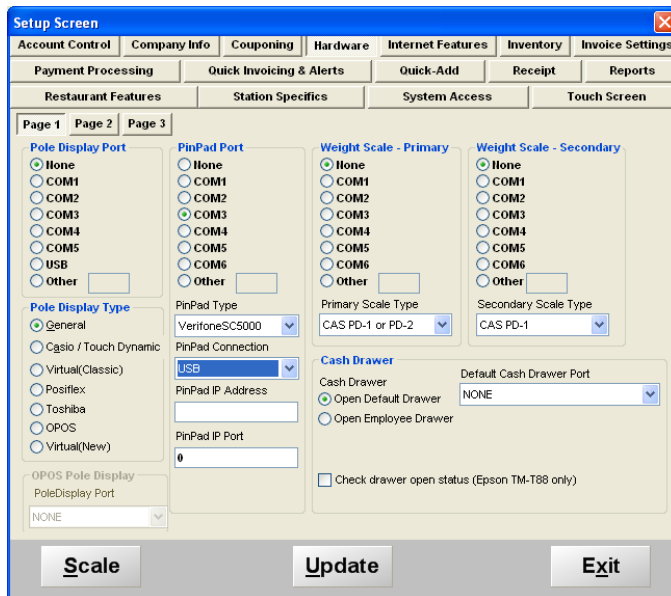
	1. Select Start .
	2. Select My Computer .
	3. Select View system information .
	4. Select the Hardware tab. 5. Select Device Manager .
	6. Expand Ports (COM & LPT) . 7. Make a note of the COM port being used by the Prolific USB-to-Serial cable.

Configuring CRE or RPE to communicate with the VeriFone Pinpad SC5000

To configure CRE or RPE to communicate with the SC5000, start CRE or RPE, select **Manager**, provide the requested credentials, and follow these steps.



1. Select **Setup** and then **Setup Screen**.



2. Select the **Hardware** tab.
3. Select the COM port being used by the SC5000 using the COM port found in step 7 of the previous section.
4. Set the **PinPad Type** to **VerifoneSC5000**.
5. Set the **PinPad Connection** to **USB**.
6. Select **Update**.

Note: to test the pinpad you must have a credit card processor setup which you will setup in the setup screen. Please see: <http://faq.pcamerica.com/paymentprocessing> for more information.