

One Blue Hill Plaza, 16th Floor, PO Box 1546

Pearl River, NY 10965

1-800-PC-AMERICA, 1-800-722-6374

(Voice) 845-920-0800 (Fax) 845-920-0880

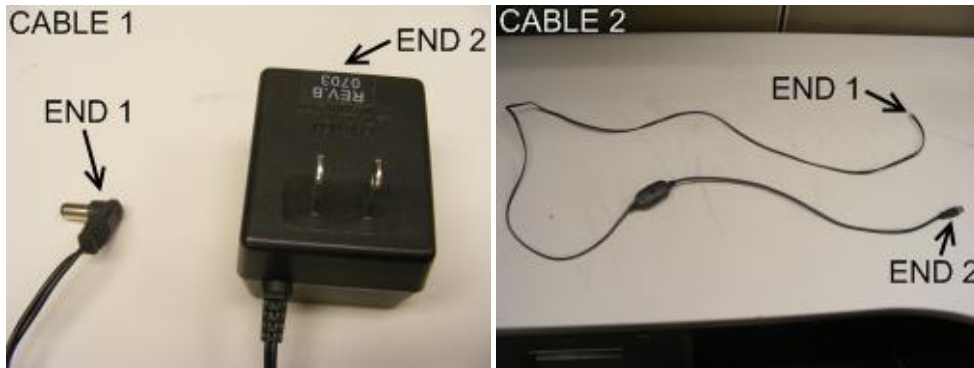
Setting Up the Verifone 1000SE Pinpad via USB in Windows 7 64BIT




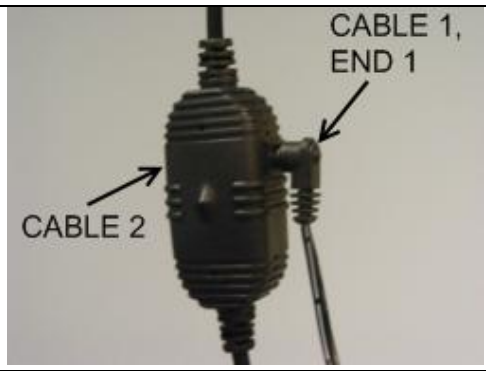

This document explains how to connect the Verifone Pinpad 1000SE (P/N P003-180-02-USB) to a computer running Windows 7 via USB and configuring CRE or RPE to communicate with it.

Connecting the VeriFone Pinpad 1000SE to a computer via USB

To connect the 1000SE to a computer via USB, you will need the following cables:



The USB cable part number is: 24625-02-R Rev A

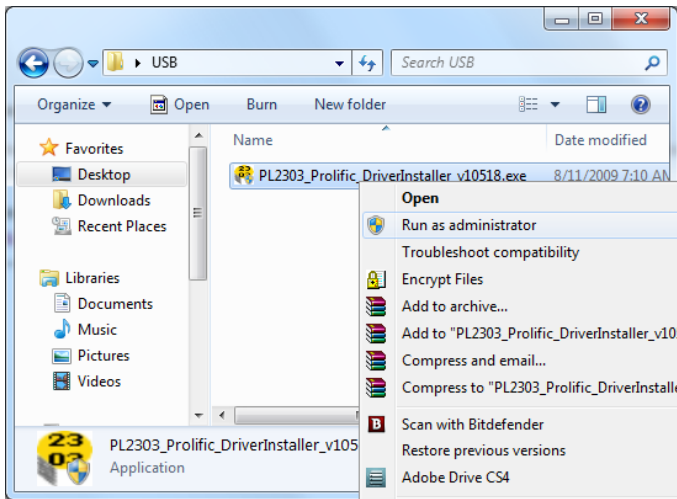
		<ol style="list-style-type: none"> 1. Plug end 1 of cabl e 2 into the Verifone 1000se.
		<ol style="list-style-type: none"> 2. Plug end 1 of cabl e 1 into cabl e 2. 3. Plug end 2 of cabl e 1 into a power outlet.
		<ol style="list-style-type: none"> 4. Plug end 2 of cabl e 2 into the computer.

Installing drivers for the USB-to-Serial cable used with the VeriFone Pinpad 1000SE

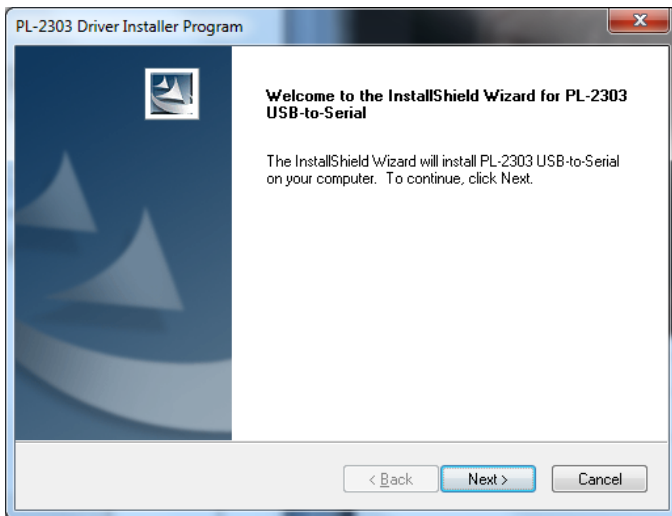
If the 1000SE is connected to the computer via USB, special drivers will need to be installed.

Note: You can download the USB-to-Serial cable driver from:

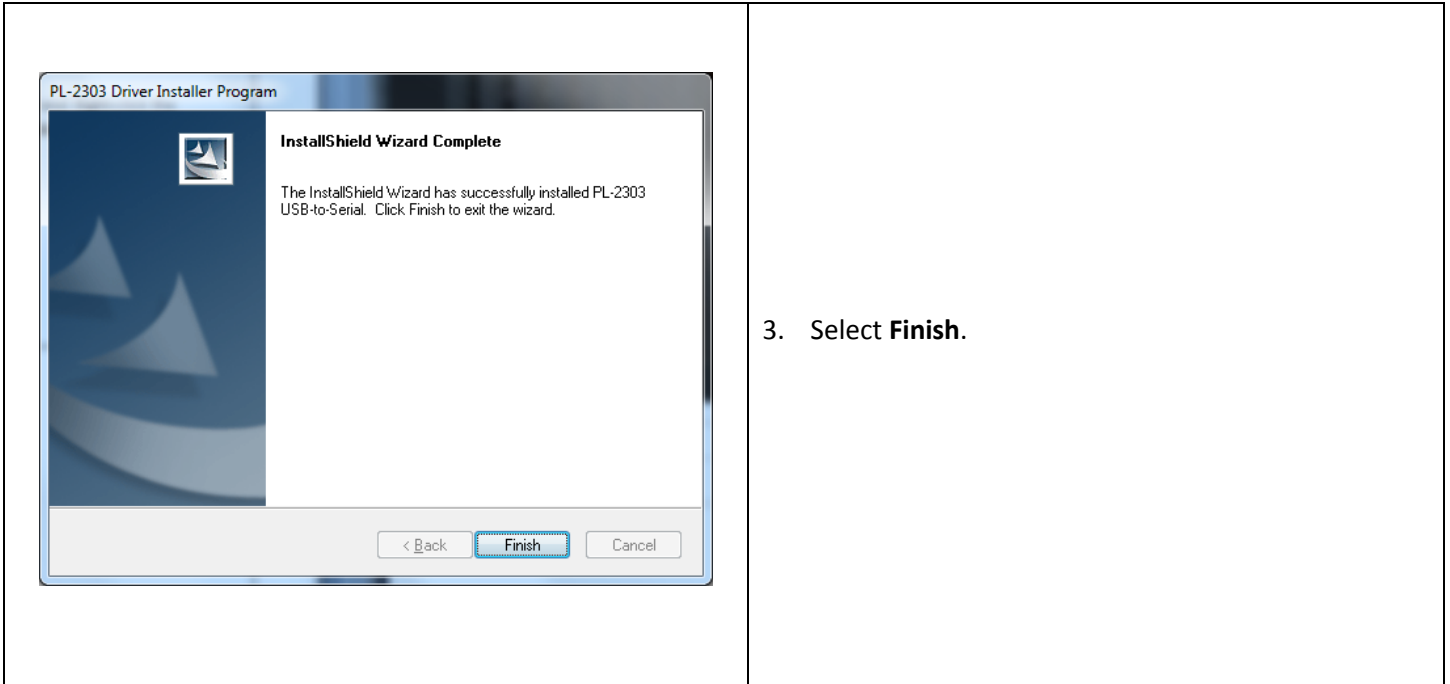
http://download2.pcamerica.com/drivers/PL2303_Prolific_DriverInstaller_v10518.zip



1. Hold Shift on your keyboard and Right-click the **PL2303_Prolific_DriverInstaller_v10518.exe** and select **Run as administrator**.



2. Select **Next**.



3. Select **Finish**.


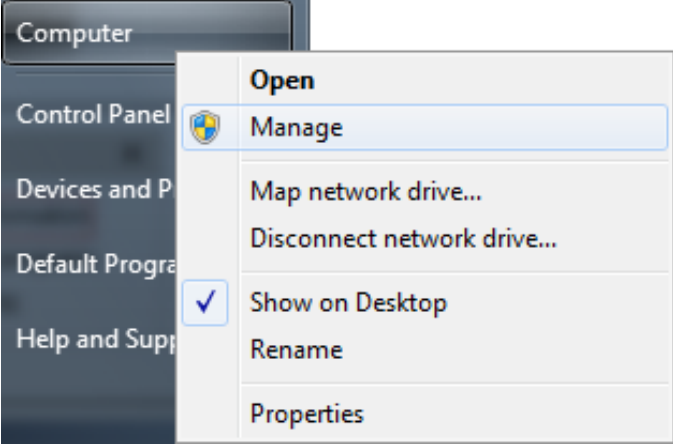
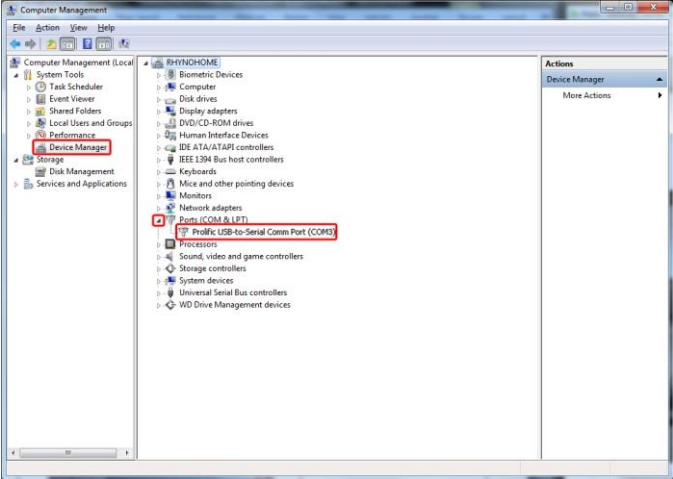
If the above does not correctly install the driver that the following must be done:

1. Right-click **PL2303_Prolific_DriverInstaller_v10518.exe** and select **Properties**.
2. Select the **Compatibility** tab.
3. Under **Compatibility mode** select **Run this program in compatibility mode for**, then select **Windows XP (Service Pack 3)**.
4. Under **Privilege Level** select **Run this program as an administrator**.
5. Select **Apply** then select **OK**.

After the above is done try opening the application again.

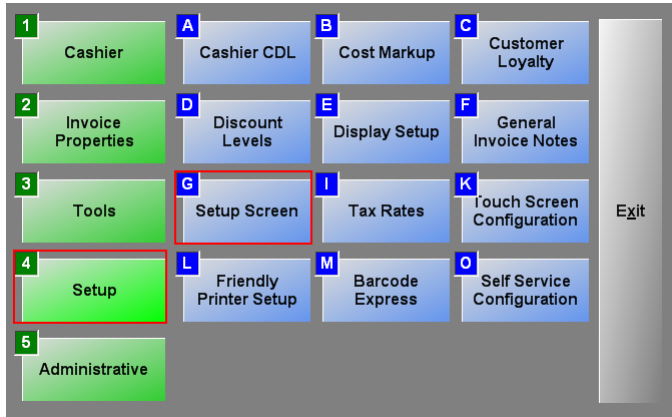
Determining which COM port is being used by the USB-to-Serial cable

Even if the USB-to-Serial cable is used, the computer thinks the 1000SE is connected to a COM port. To find out which COM port the computer has assigned to the 1000SE, follow these steps.

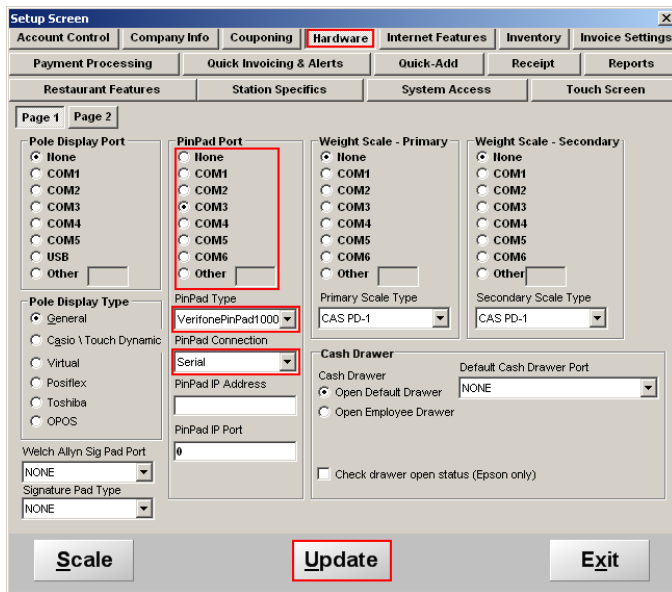
	<ol style="list-style-type: none">1. Select Start.
	<ol style="list-style-type: none">2. Right-click Computer, then select Manage.
	<ol style="list-style-type: none">3. Select Device Manager.4. Expand Ports (COM & LPT).5. Make a note of the COM port being used by the Prolific USB-to-Serial cable.

Configuring CRE or RPE to communicate with the VeriFone Pinpad 1000SE

To configure CRE or RPE to communicate with the 1000SE, start CRE or RPE, select **Manager**, provide the requested credentials, and follow these steps.



1. Select **Setup** and then **Setup Screen**.



2. Select the **Hardware** tab.
3. Select the COM port being used by the 1000SE using the COM port found in step 5 of the previous section.
4. Set the **PinPad Type** to **VerifonePinPad1000**.
5. Set the **PinPad Connection** to **Serial**.
6. Select **Update**.

Note: to test the pinpad you must have a credit card processor setup which you will setup in the setup screen. Please see: <http://faq.pcamerica.com/paymentprocessing> for more information.