

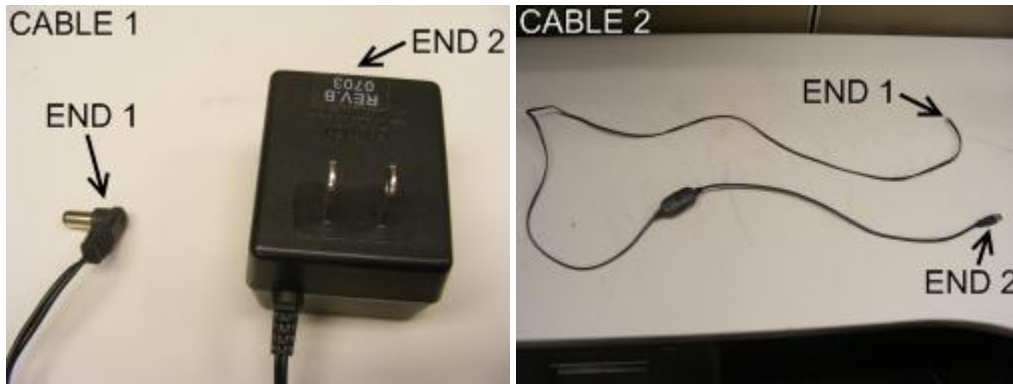
Setting Up the Verifone 1000SE Pinpad via USB




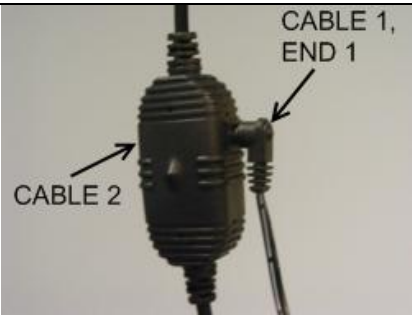

This document explains how to connect the Verifone Pinpad 1000SE (P/N P003-180-02-USB) to a computer via USB and configure CRE or RPE to communicate with it.

Connecting the VeriFone Pinpad 1000SE to a computer via USB

To connect the 1000SE to a computer via USB, you will need the following cables:



The USB cable part number is: 24625-02-R Rev A

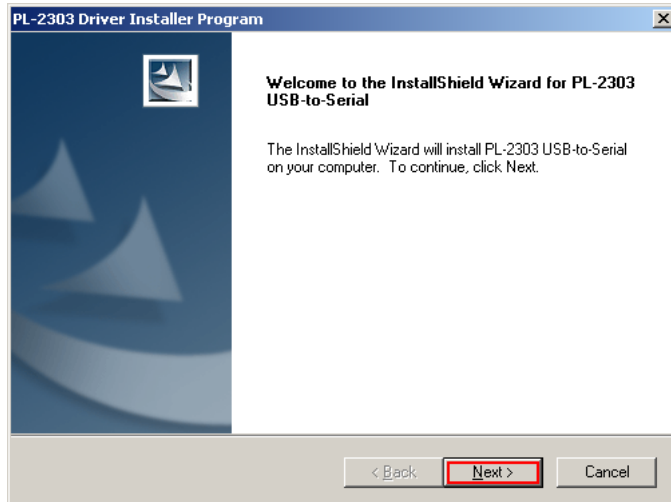
	<ol style="list-style-type: none">1. Plug end 1 of cabl e 2 into the Verifone 1000se.
	<ol style="list-style-type: none">2. Plug end 1 of cabl e 1 into cabl e 2.3. Plug end 2 of cabl e 1 into a power outlet.
	<ol style="list-style-type: none">4. Plug end 2 of cabl e 2 into the computer.

Installing drivers for the USB-to-Serial cable used with the VeriFone Pinpad 1000SE

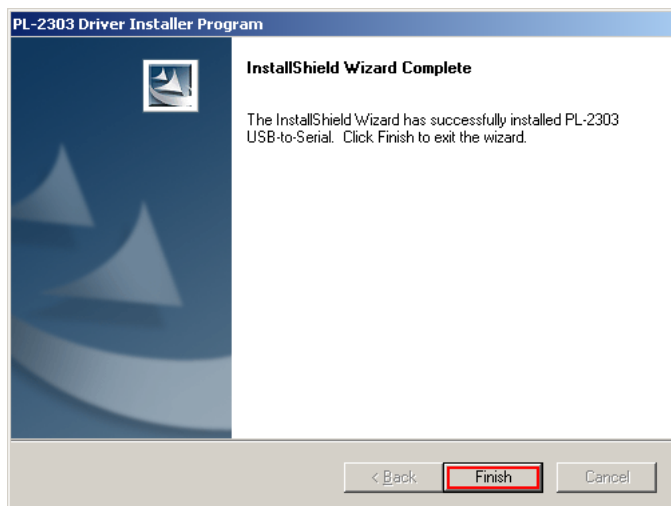
If the 1000SE is connected to the computer via USB, special drivers will need to be installed. Double-click **PL2303_Prolific_DriverInstaller_v10518.exe** and follow these steps.

Note: You can download the USB-to-Serial cable driver from:

http://download2.pcamerica.com/drivers/PL2303_Prolific_DriverInstaller_v10518.zip





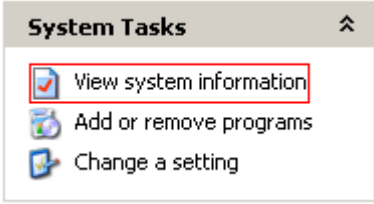

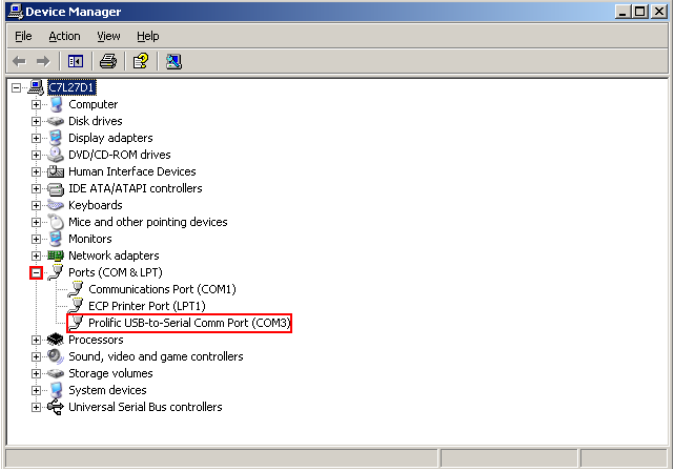
1. Select **Next**.



2. Select **Finish**.

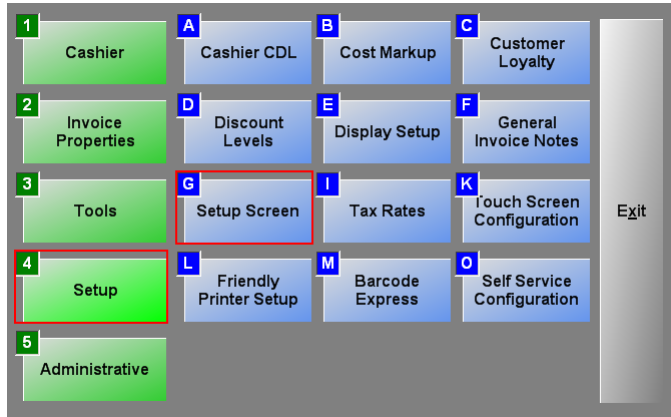
Determining which COM port is being used by the USB-to-Serial cable

Even if the USB-to-Serial cable is used, the computer thinks the 1000SE is connected to a COM port. To find out which COM port the computer has assigned to the 1000SE, follow these steps.

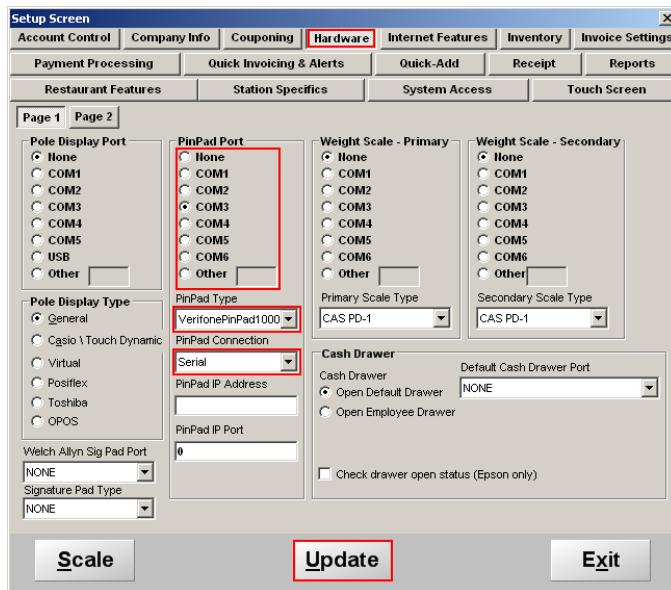
	1. Select Start .
	2. Select My Computer .
	3. Select View system information .
	4. Select the Hardware tab. 5. Select Device Manager .
	6. Expand Ports (COM & LPT) . 7. Make a note of the COM port being used by the Prolific USB-to-Serial cable.

Configuring CRE or RPE to communicate with the VeriFone Pinpad 1000SE

To configure CRE or RPE to communicate with the 1000SE, start CRE or RPE, select **Manager**, provide the requested credentials, and follow these steps.



1. Select **Setup** and then **Setup Screen**.



2. Select the **Hardware** tab.
3. Select the COM port being used by the 1000SE using the COM port found in step 7 of the previous section.
4. Set the **PinPad Type** to **VerifonePinPad1000**.
5. Set the **PinPad Connection** to **Serial**.
6. Select **Update**.

Note: to test the pinpad you must have a credit card processor setup which you will setup in the setup screen. Please see: <http://faq.pcamerica.com/paymentprocessing> for more information.