

Setting Up the Verifone 1000SE Pinpad via Serial



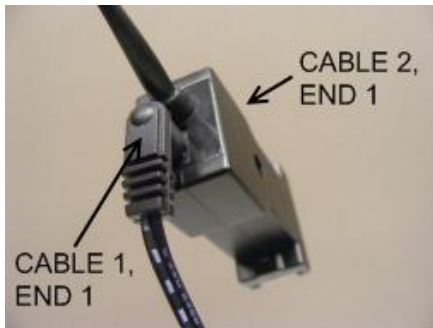
This document explains how to connect the Verifone Pinpad 1000SE to a computer via Serial and configure CRE or RPE to communicate with it.

Connecting the Verifone Pinpad 1000SE to a computer via Serial

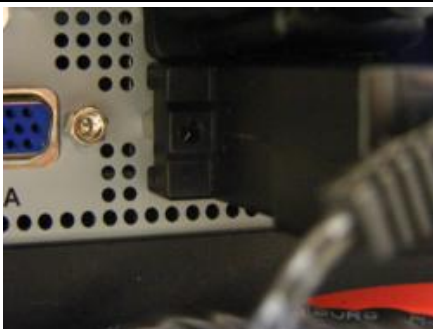
To connect the 1000SE to a computer via Serial, you will need the following cables:



1. Insert **end 2** of **cable 2** into the VeriFone 1000SE.



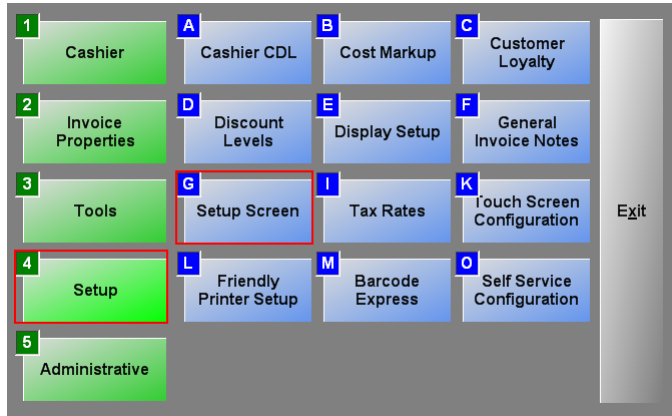
2. Insert **end 1** of **cable 1** into **end 1** of **cable 2**.
3. Plug **end 2** of **cable 1** into a power outlet.



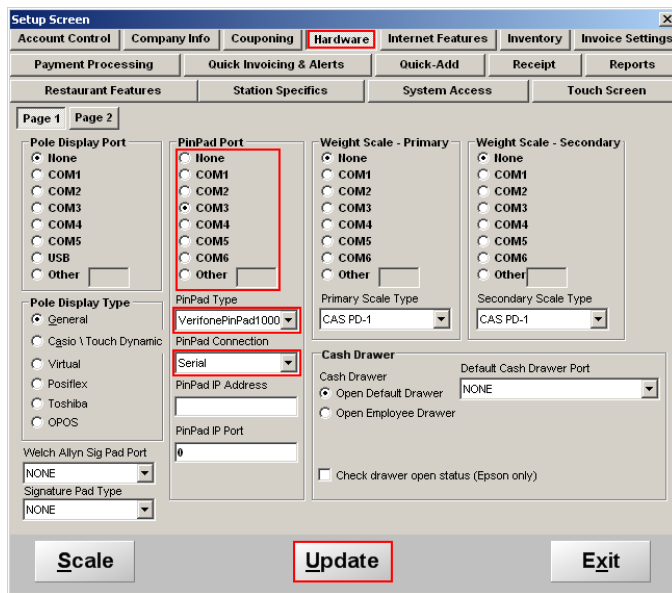
4. Insert **end 2** of **cable 2** into the computer.

Configuring CRE or RPE to communicate with the VeriFone Pin pad 1000SE

To configure CRE or RPE to communicate with the 1000SE, start CRE or RPE, select **Manager**, provide the requested credentials, and follow these steps.



1. Select **Setup** and then **Setup Screen**.



2. Select the **Hardware** tab.
3. Select the COM port being used by the 1000SE (e.g. **COM1**).
4. Set the **PinPad Type** to **VerifonePinPad1000**.
5. Set the **PinPad Connection** to **Serial**.
6. Select **Update**.

Note: to test the pinpad you must have a credit card processor setup which you will setup in the setup screen. Please see: <http://faq.pcamerica.com/paymentprocessing> for more information.