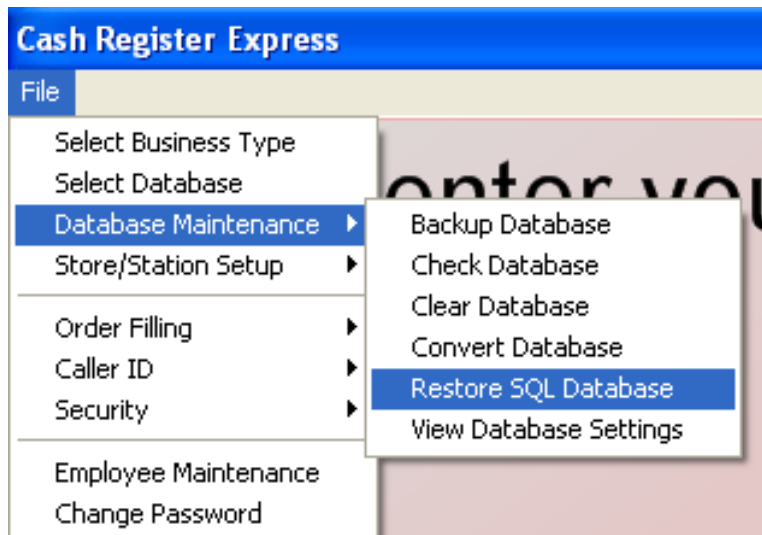


Restoring a Database

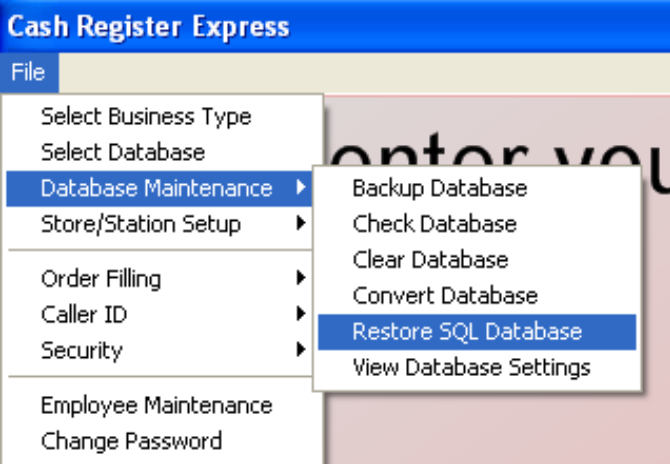

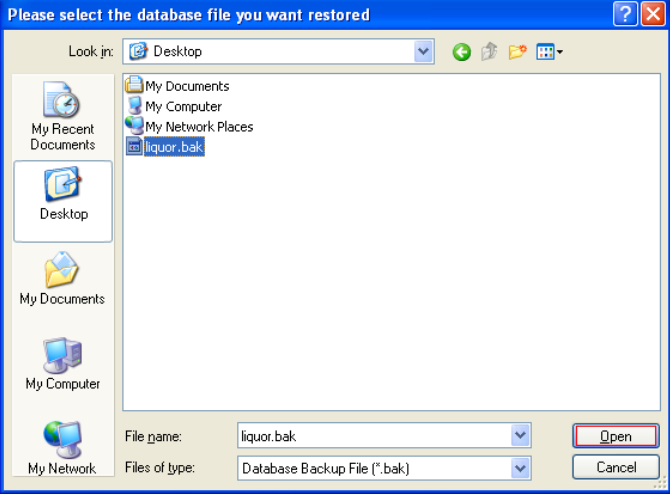


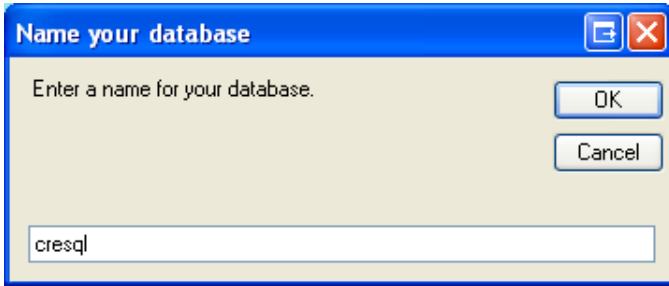
Restoring a database from a backup is as simple as creating that backup.

*****NOTE*** You may not restore a newer version of a database to an older version of CRE (i.e. you cannot restore a 12.0 database to version 11.0). If you are restoring a database after a conversion, always make sure the software is at the latest patch!**

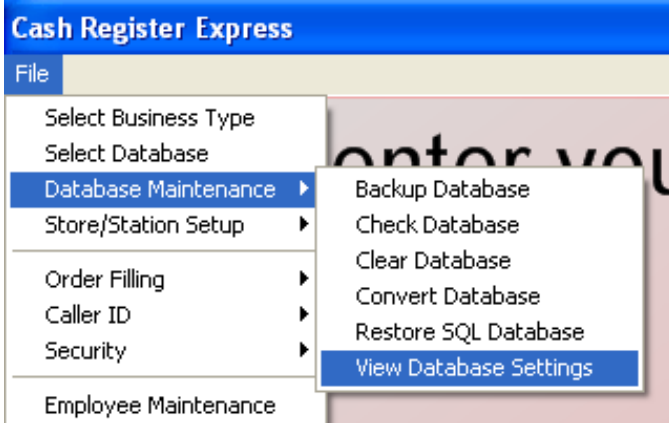
Restoring a database in Windows XP

Open CRE/RPE and then follow these steps.

 <p>The screenshot shows the 'Cash Register Express' application window. The 'File' menu is open, and 'Database Maintenance' is selected, which has opened a sub-menu. In this sub-menu, 'Restore SQL Database' is highlighted. Other options in the sub-menu include 'Backup Database', 'Check Database', 'Clear Database', 'Convert Database', and 'View Database Settings'. Other options in the main 'File' menu include 'Select Business Type', 'Select Database', 'Store/Station Setup', 'Order Filing', 'Caller ID', 'Security', 'Employee Maintenance', and 'Change Password'.</p>	<ol style="list-style-type: none">1. Select File.2. Move your mouse over Database Maintenance.3. Select Restore SQL Database.
 <p>The screenshot shows a dialog box titled 'Password' with the text 'Enter Administrator Password'. It features a text input field for the password, a 'Cancel' button, a 'Keyboard' button, and an 'OK' button.</p>	<ol style="list-style-type: none">4. Provide the Administrator's password and select OK.
 <p>The screenshot shows a file selection dialog box titled 'Please select the database file you want restored'. The 'Look in:' field is set to 'Desktop'. The file list shows 'liquor.bak' selected. The 'File name:' field contains 'liquor.bak' and the 'Files of type:' field is set to 'Database Backup File (*.bak)'. The 'Open' button is highlighted.</p>	<ol style="list-style-type: none">5. Find the backup file that was created in the past (it should have an extension of .bak) and select it.6. Select Open.



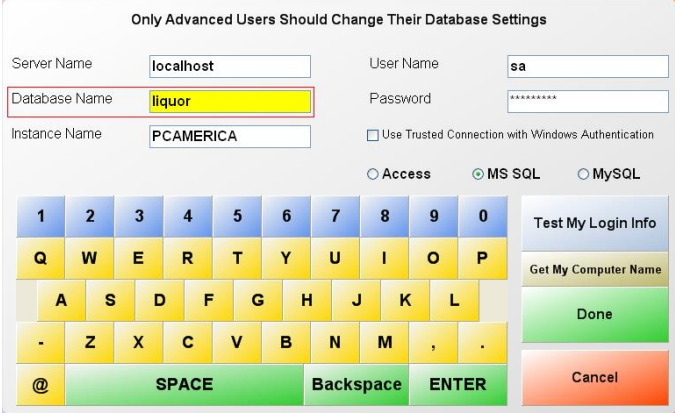

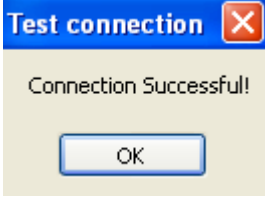

7. Enter a name for your database.
 - This name should be *unique*. That is, you have not used it before for this purpose.
8. Select **OK**.



9. Select **File**.
10. Move your mouse over **Database Maintenance**.
11. Select **View Database Settings**.



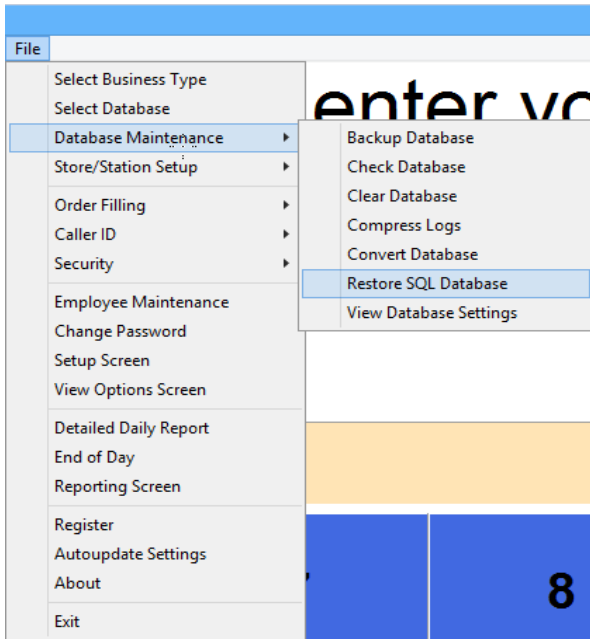
12. Provide the Administrator's password and select **OK**.

	<p>13. For the Database Name field, provide the name used in step 7.</p>
	<p>14. Select Test My Login Info.</p>
	<p>15. If you entered the name of the database correctly and did not modify any other field, you should see the message pictured on the left.</p>
	<p>16. Select Done.</p>

You have successfully restored your database from a backup!

Restoring a database

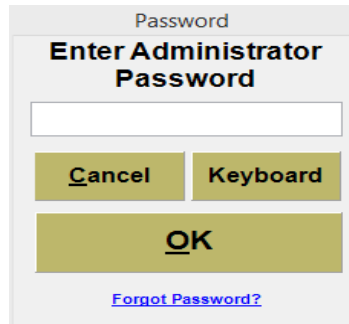
Open CRE/RPE and then follow these steps.



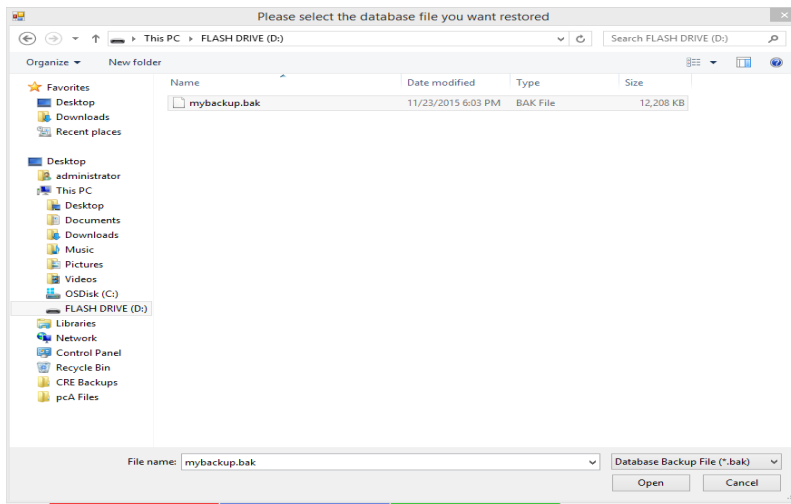
17. Select **File**.

18. Move your mouse over **Database Maintenance**.

19. Select **Restore SQL Database**.

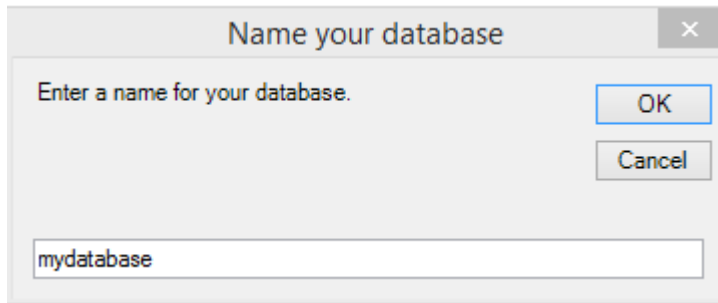


20. Provide the Administrator's password and select **OK**.



21. Find the backup file that was created in the past (it should have an extension of **.bak**) and select it.

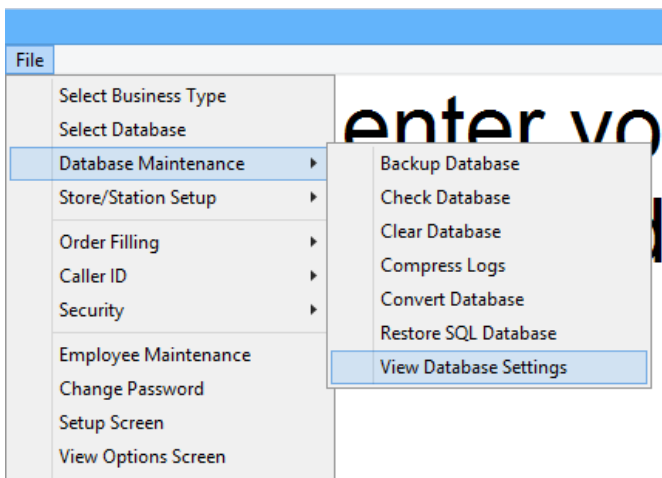
22. Select **Open**.



23. Enter a name for your database.

- This name should be *unique*. That is, you have not used it before for this purpose.

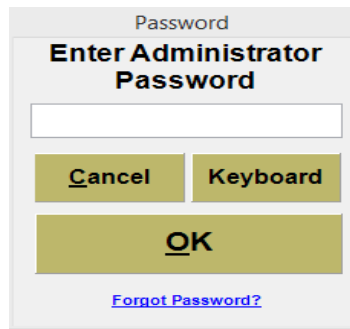
24. Select **OK**.



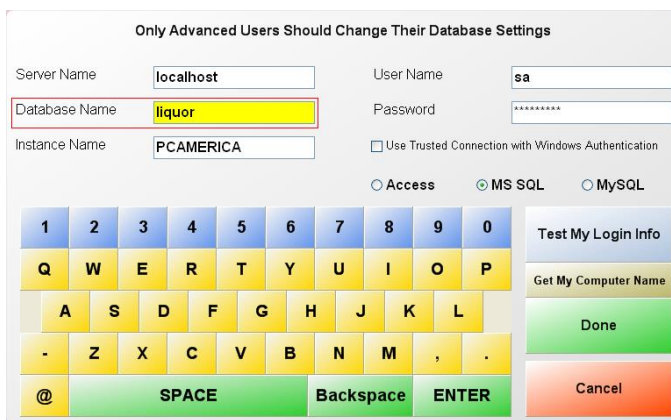
25. Select **File**.

26. Move your mouse over **Database Maintenance**.

27. Select **View Database Settings**.



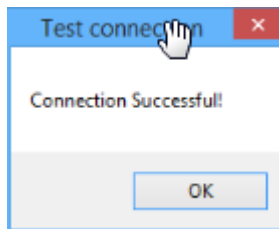
28. Provide the Administrator's password and select **OK**.



29. For the **Database Name** field, provide the name used in step 7.



30. Select **Test My Login Info**.



31. If you entered the name of the database correctly and did not modify any other field, you should see the message pictured on the left.



32. Select **Done**.

