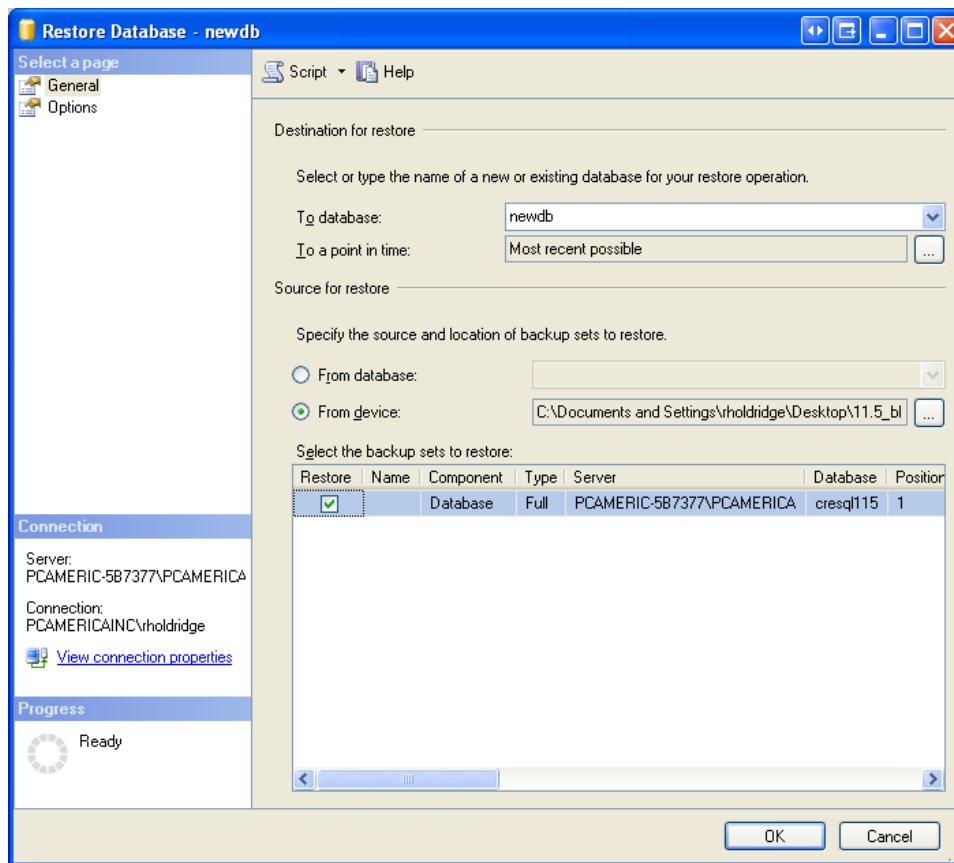

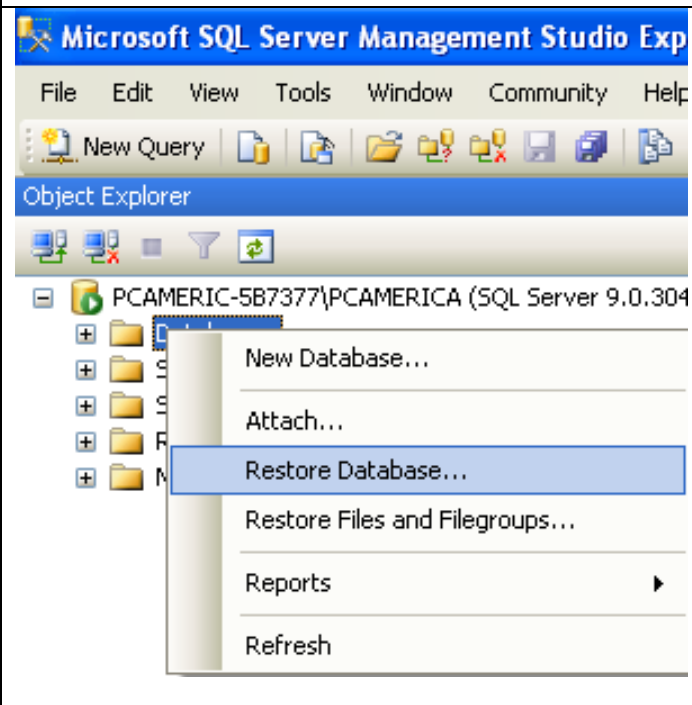
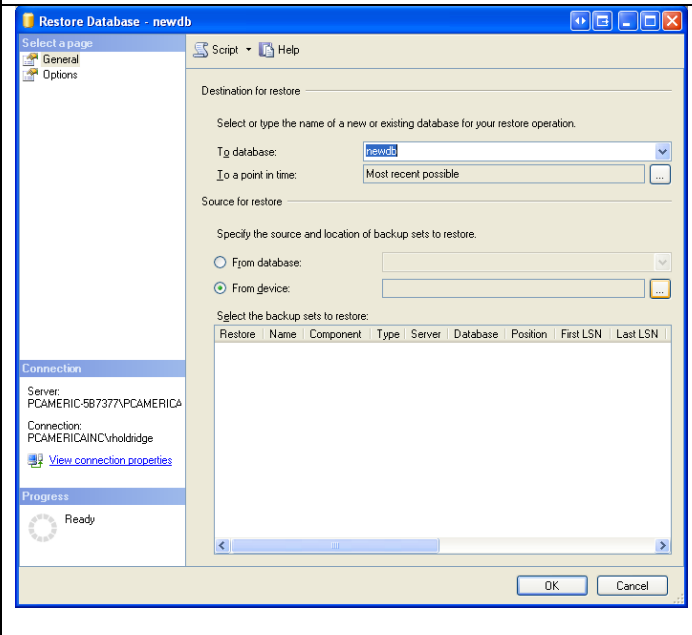


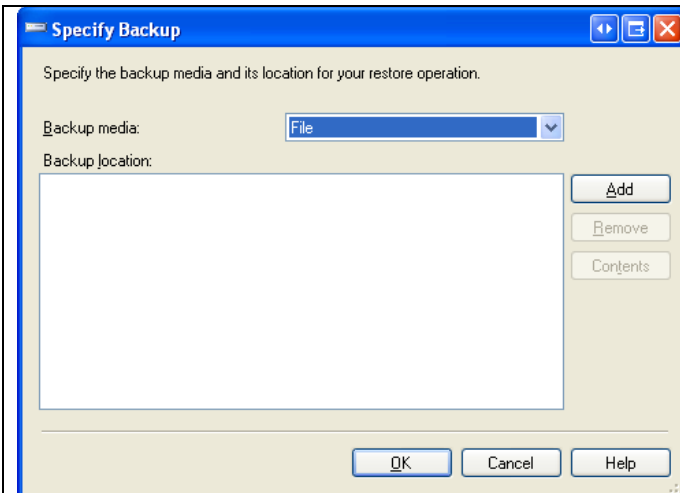
Restoring a Database using the SQL Management Tool



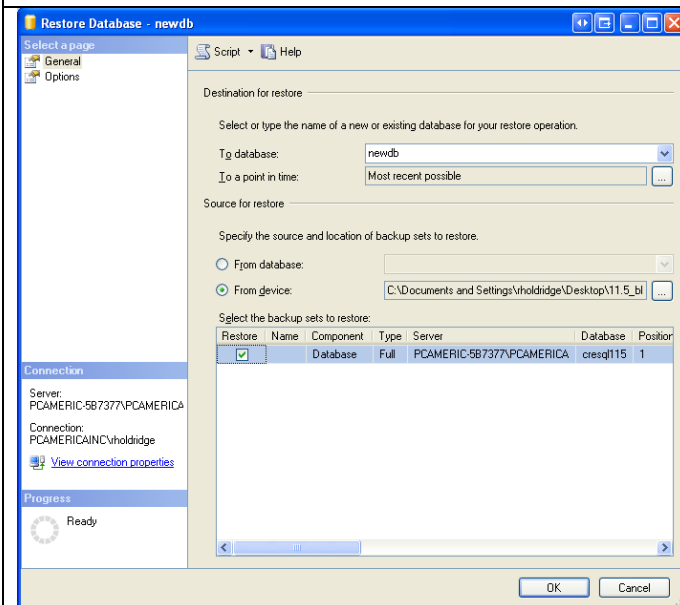
This document will walk you through restoring a database backup using the SQL management studio and, setting up CRE/RPE with the database name you specify.

Restoring a backup to a new database name

	<ol style="list-style-type: none">1. Open the Microsoft SQL Management Studio Express.
	<ol style="list-style-type: none">2. Right click Databases then select Restore Database...
	<ol style="list-style-type: none">3. For To Database enter a unique name for your new database.4. Select From Device and then select the ellipse (...) button.



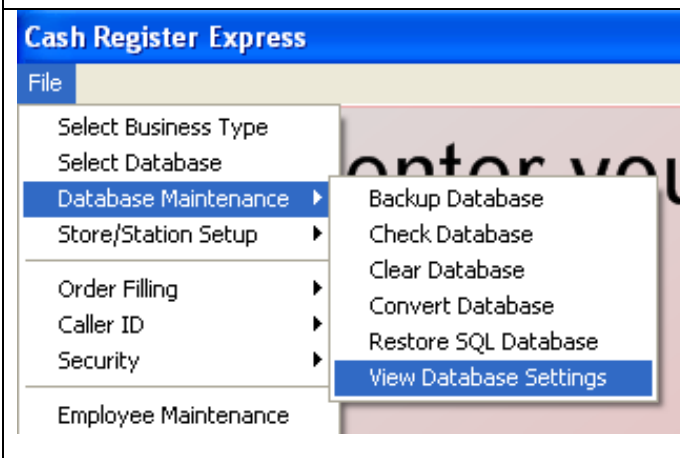
5. Select the **Add** button.
6. Select the .bak file you are trying to restore then select **OK**.



7. Put a check mark in the **Restore** column.
8. Select **OK**.

After the restore has completed you will receive a message telling you so.

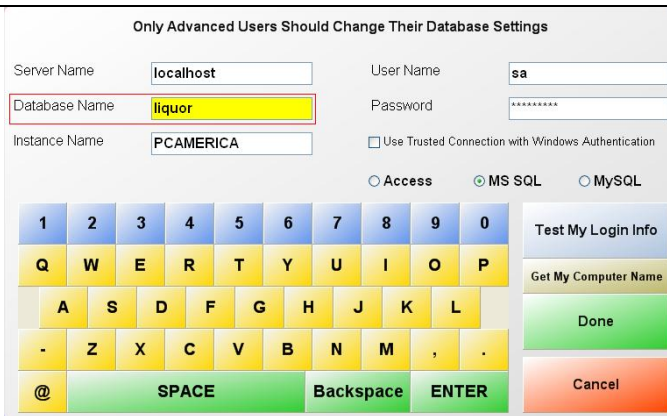
We will then need to open CRE/RPE.



9. Select **File**.
10. Move your mouse over **Database Maintenance**.
11. Select **View Database Settings**.



12. Provide the Administrator's password and select **OK**.



13. For the **Database Name** field, provide the name used in step 3.



14. Select **Test My Login Info**.



15. If you entered the name of the database correctly and did not modify any other field, you should see the message pictured on the left.



16. Select **Done**.