

---

*One Blue Hill Plaza, 16<sup>th</sup> Floor, PO Box 1546*

*Pearl River, NY 10965*

*1-800-PC-AMERICA, 1-800-722-6374*

*(Voice) 845-920-0800 (Fax) 845-920-0880*

## **Posiflex PD2600 Pole Display Installation**



This document provides step-by-step instructions for installing your Posiflex PD-2600 Pole Display.

## Connecting the PD-2600 Pole Display to the Computer



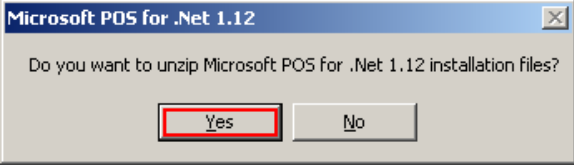
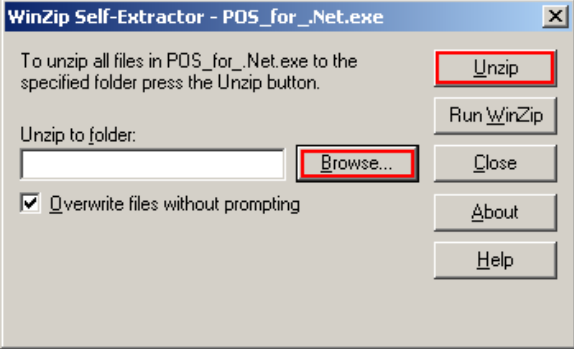
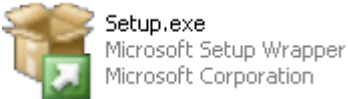
1. Plug the Pole Display's serial cable into a **COM** port on the computer.

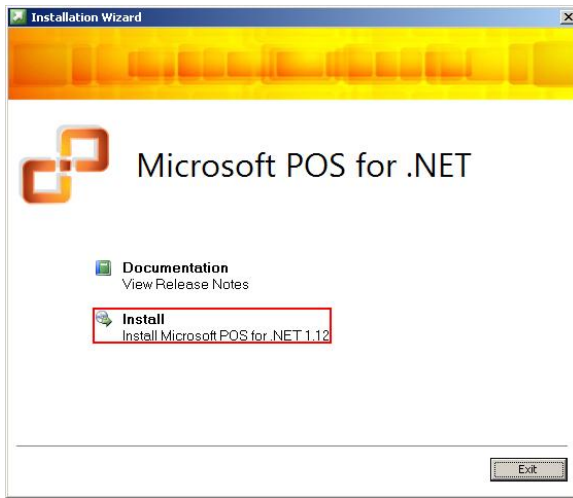
## Installing Microsoft POS for .NET

The installer for Microsoft POS for .NET can be downloaded at:

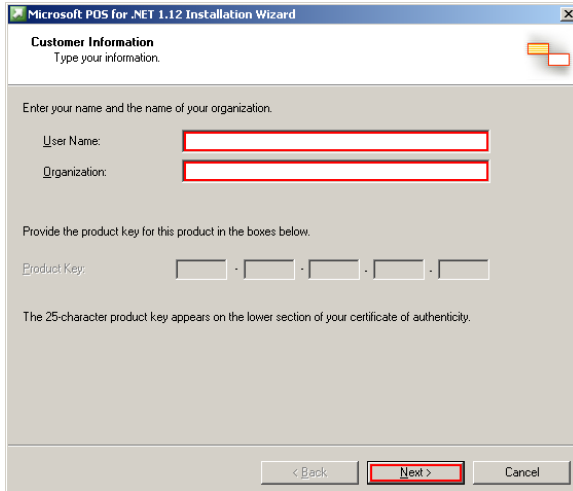
- [http://download2.pcamerica.com/drivers/POS\\_for\\_.Net.exe](http://download2.pcamerica.com/drivers/POS_for_.Net.exe)

Double-click the installer and follow these steps:

|                                                                                     |                                                                                                                                                       |
|-------------------------------------------------------------------------------------|-------------------------------------------------------------------------------------------------------------------------------------------------------|
|    | <ol style="list-style-type: none"><li>1. Select <b>Yes</b>.</li></ol>                                                                                 |
|   | <ol style="list-style-type: none"><li>2. Select <b>Browse</b> and select a folder to unzip all files to.</li><li>3. Select <b>Unzip</b>.</li></ol>    |
|  | <ol style="list-style-type: none"><li>4. Navigate to the folder containing the unzipped files.</li><li>5. Double-click on <b>Setup.exe</b>.</li></ol> |

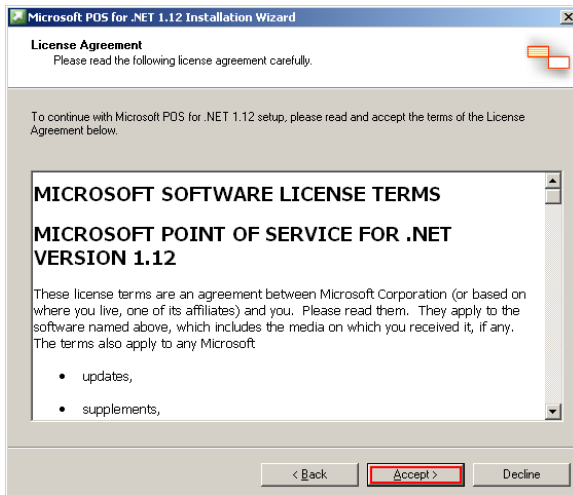


6. Select **Install**.

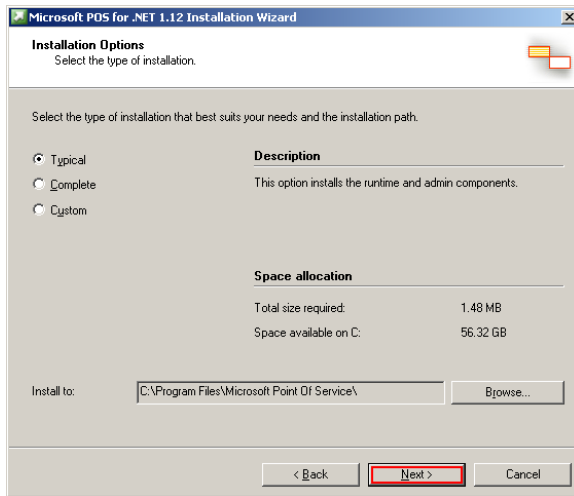


7. Provide a user name and organization.

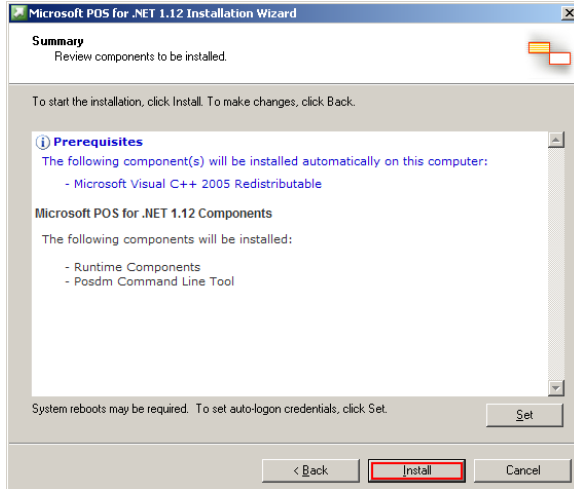
8. Select **Next**.



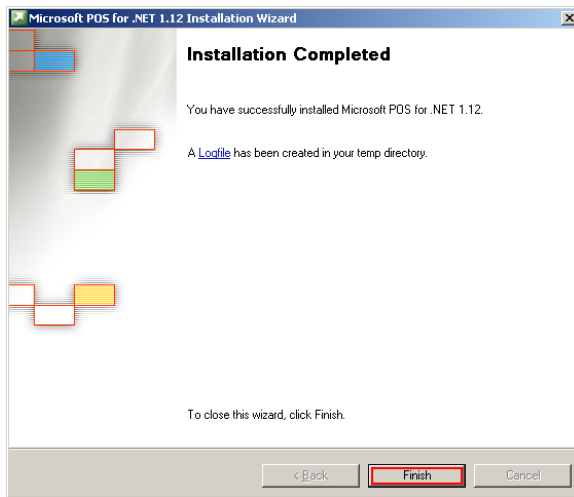
9. Select **Accept**.



10. Select **Next**.



11. Select **Install**.



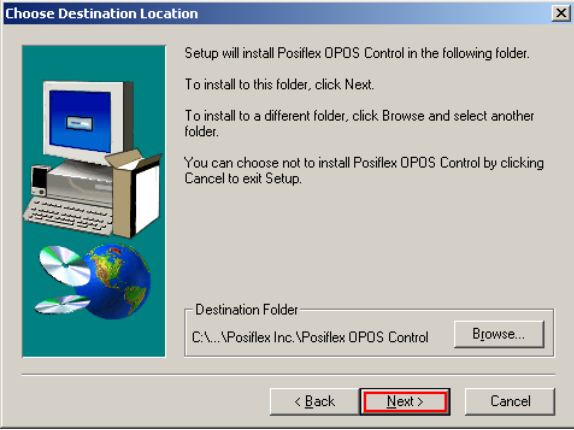
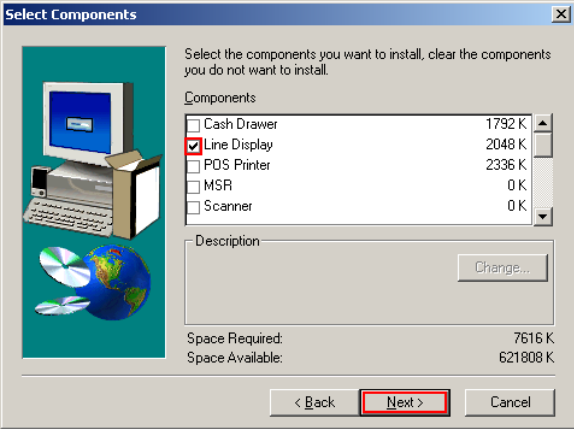
12. Select **Finish**.

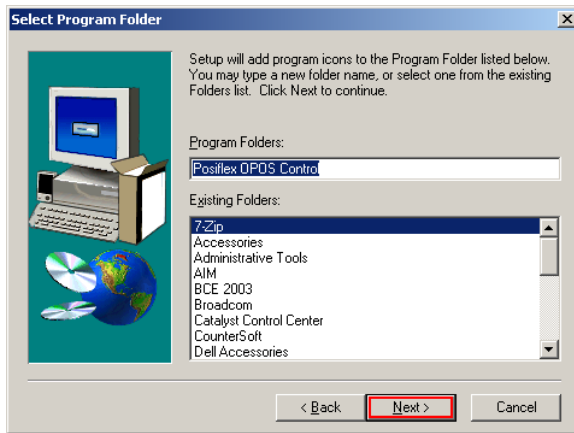
## Installing the Posiflex OPOS Control Manager and configuring the Pole Display

The installer for the Posiflex OPOS Control Manager can be downloaded at:

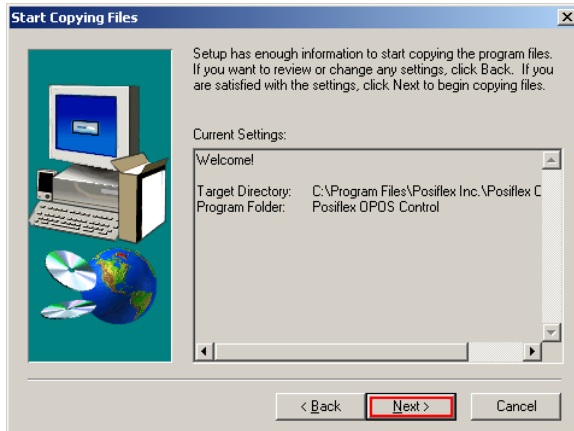
- [http://download2.pcamerica.com/drivers/Posiflex\\_OPOS\\_Control\\_Manager.zip](http://download2.pcamerica.com/drivers/Posiflex_OPOS_Control_Manager.zip)

Double-click the installer and follow these steps:

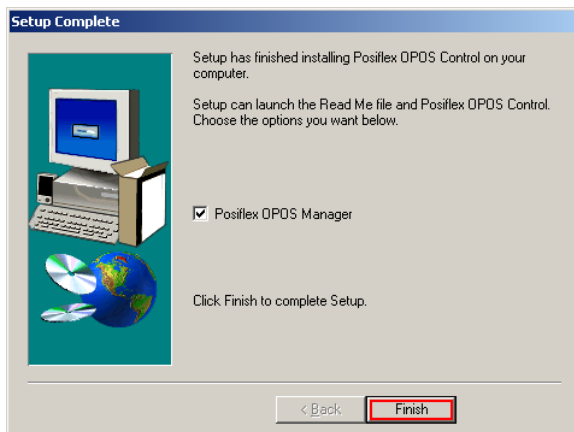
|                                                                                    |                                                                                                                    |
|------------------------------------------------------------------------------------|--------------------------------------------------------------------------------------------------------------------|
|   | <ol style="list-style-type: none"><li>1. Select <b>Next</b> when asked to choose a destination location.</li></ol> |
|  | <ol style="list-style-type: none"><li>2. Check <b>Line Display</b>.</li><li>3. Select <b>Next</b>.</li></ol>       |



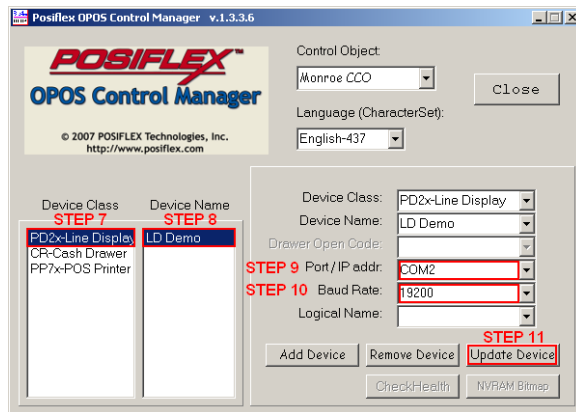
4. Select **Next** when asked to select a program folder.



5. Select **Next** in order to start copying files.



6. When setup is complete, select **Finish**.

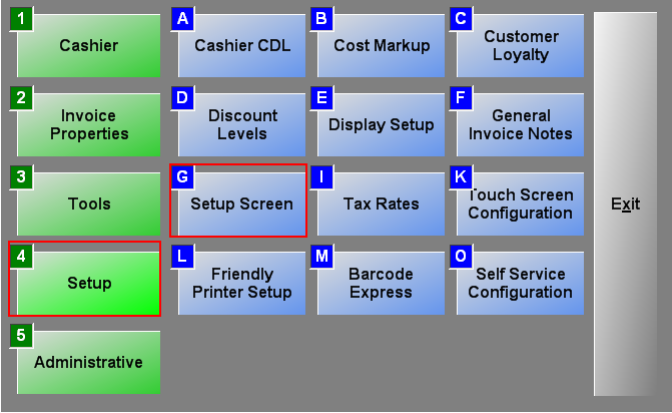
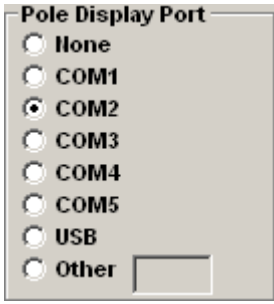
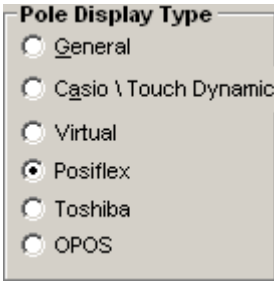


7. Select **PD2x-Line Display**.
8. Select **LD Demo**.
9. Change the **Port / IP addr** field to the **COM** port that you plugged the pole display into.
10. Change the **Baud Rate** field to **19200**.
11. Select **Update Device**.



## Configuring CRE or RPE to communicate with the Pole Display

To configure CRE or RPE to communicate with the Pole Display, open CRE or RPE, select **Manager**, provide the requested credentials, and follow these steps.

|                                                                                     |                                                                                                                   |
|-------------------------------------------------------------------------------------|-------------------------------------------------------------------------------------------------------------------|
|    | <ol style="list-style-type: none"> <li>1. Select <b>Setup</b>.</li> <li>2. Select <b>Setup Screen</b>.</li> </ol> |
| <p style="text-align: center;"><b>Hardware</b></p>                                  | <ol style="list-style-type: none"> <li>3. Select the <b>Hardware</b> tab.</li> </ol>                              |
|  | <ol style="list-style-type: none"> <li>4. Select <b>COM2</b> as the <b>Pole Display Port</b>.</li> </ol>          |
|  | <ol style="list-style-type: none"> <li>5. Select <b>Posiflex</b> as the <b>Pole Display Type</b>.</li> </ol>      |
| <p style="text-align: center;"><b>Update</b></p>                                    | <ol style="list-style-type: none"> <li>6. Select <b>Update</b>.</li> </ol>                                        |