

Pioneer StealthTOM-M6 Installation and Configuration for Windows 7



This document provides step-by-step instructions for setting up your Pioneer StealthTOM-M5 touchscreen in Windows 7.

Table of Contents

- [Hardware Breakdown](#)
- [Touchscreen Driver Installation](#)
- [Calibrating the Touchscreen Monitor](#)

Hardware Breakdown



- Connect the video cable to the computer (either the DVI or the VGA connection).
- Connect the audio out cable, from the computer to the Audio IN port on the touchscreen.
- The Audio Out port and Power out cable is for an additional sound bar.
- The USB ports can be used for any USB peripherals you would like to connect here.
- The USB IN port requires a USB A to B cable which will connect to the computer for touch functionality.

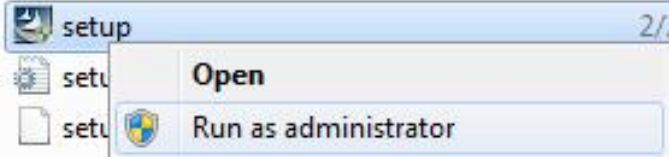
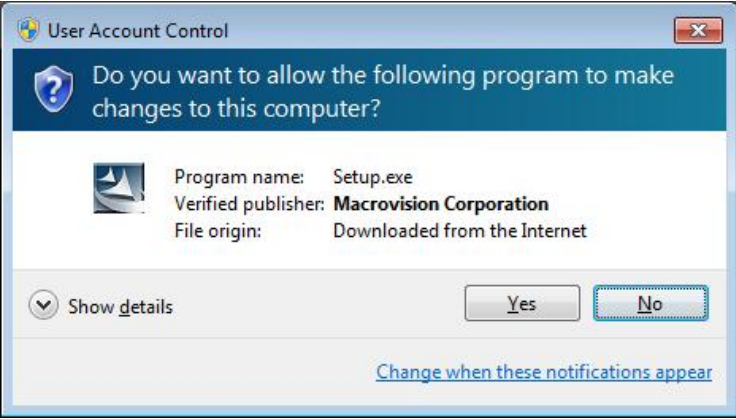
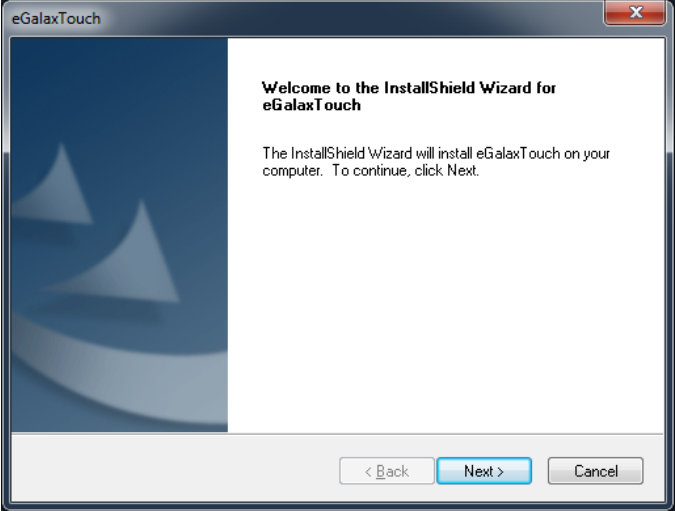


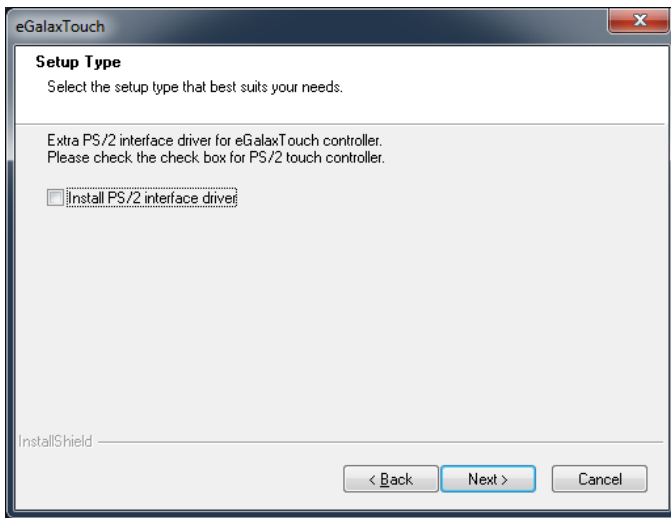
- On the left side of the monitor there are the display controls as well as the power button.

Touchscreen Driver Installation

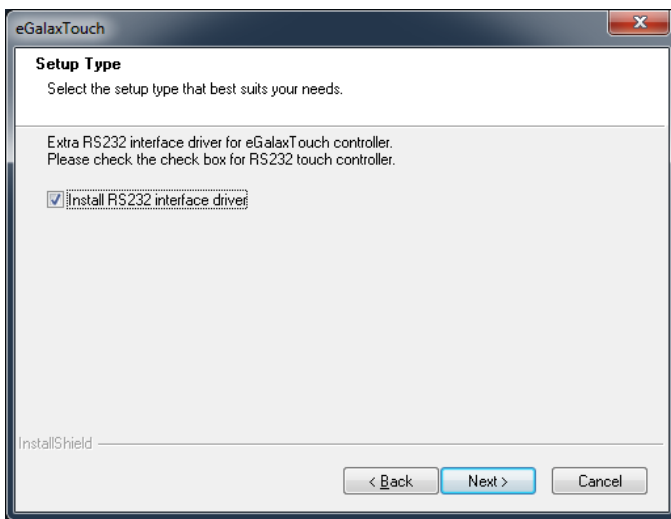
The driver for the touchscreen monitor can be downloaded from:

- <http://download2.pcamerica.com/drivers/Manufacturer/PioneerPOS/StealthTOM-M5.zip>

	<ol style="list-style-type: none">1. Right click the Setup.exe file and select Run as administrator.
	<ol style="list-style-type: none">2. If prompted select Yes to begin the installation.
	<ol style="list-style-type: none">3. Select Next.

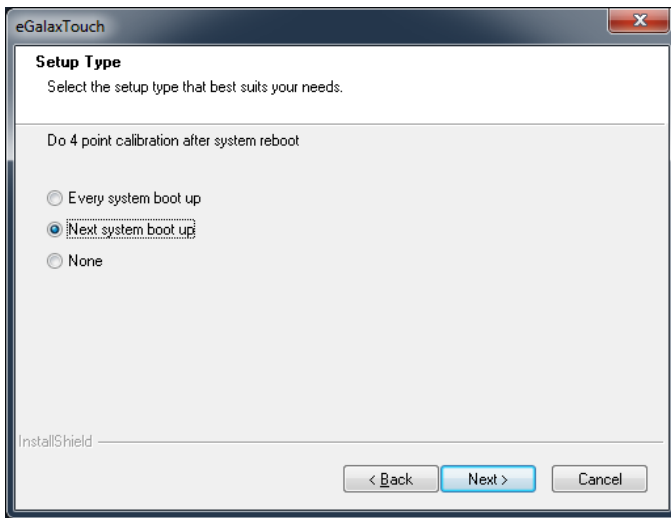


4. Select **Next**.

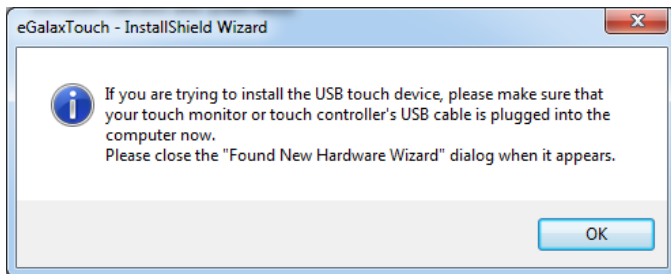


5. Select **Install RS232 interface driver**.

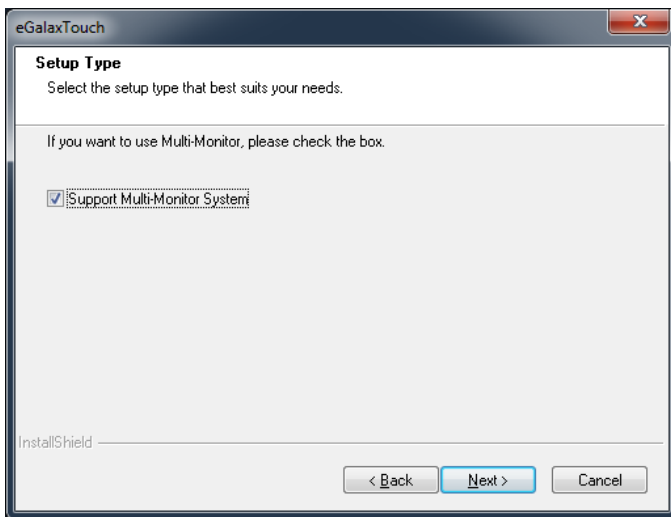
6. Select **Next**.



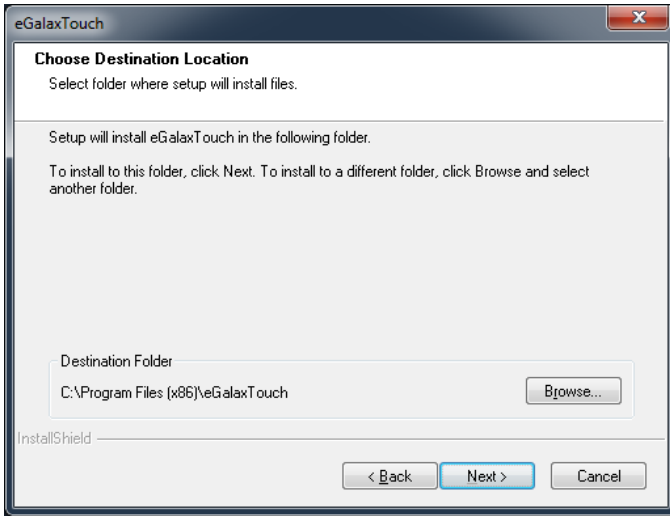
7. Select **Next system boot up**.
8. Select **Next**.



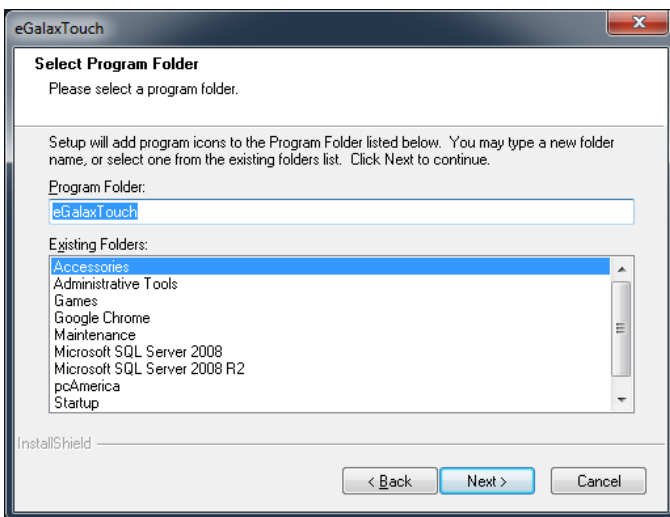
9. Select **OK**.



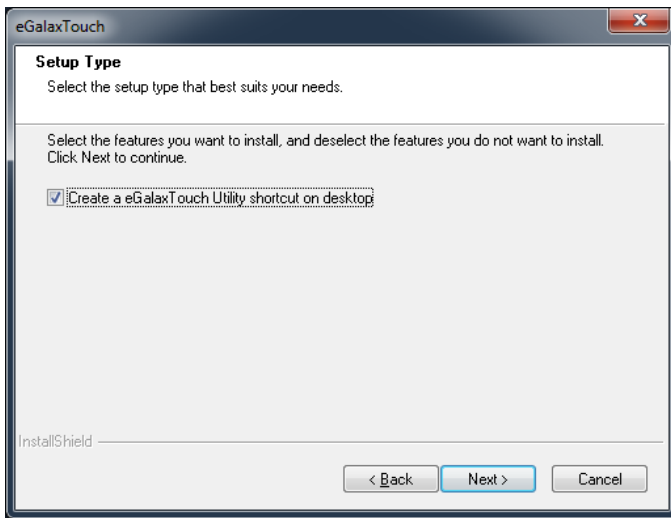
10. If you are using multiple monitors, select **Support Multi-Monitor System**.
11. Select **Next**.



12. Select **Next**.



13. Select **Next**.



14. Select **Next**.



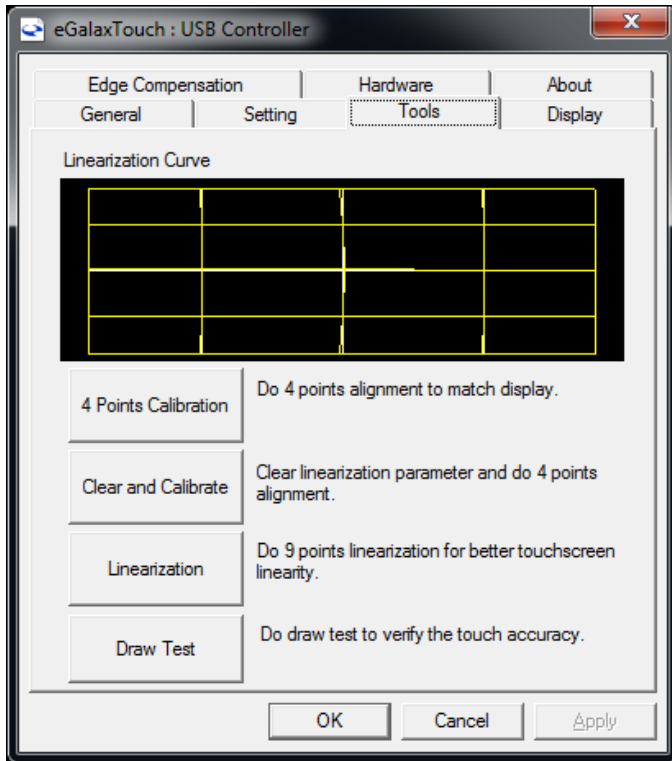
15. After the restart you should be presented with the screen to calibrate the monitor. Touch the center of each target to calibrate the monitor.

If you do not then please see the next section.

Calibrating the Touchscreen Monitor



1. Select the icon at the bottom right of the monitor (this will be located next to the date time on the taskbar).



2. Select the Tools tab, then select 4 Points Calibration.

3. You should be presented with the screen to calibrate the monitor. Touch the center of each target to calibrate the monitor.
4. When done select **OK**.

15

