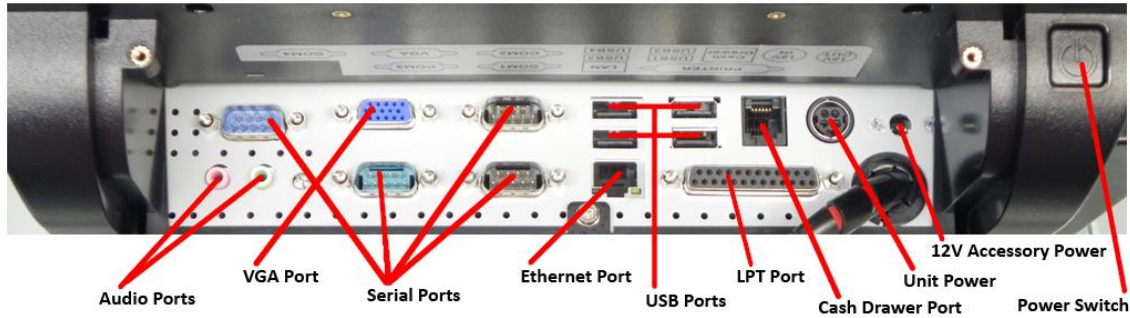


Partner SP-1000 Installation Guide



This document provides step-by-step instructions for setting up your Partner system, which contains the following components: the Partner SP-1000 Terminal, integrated Pole Display and an integrated MSR.

Hardware Ports

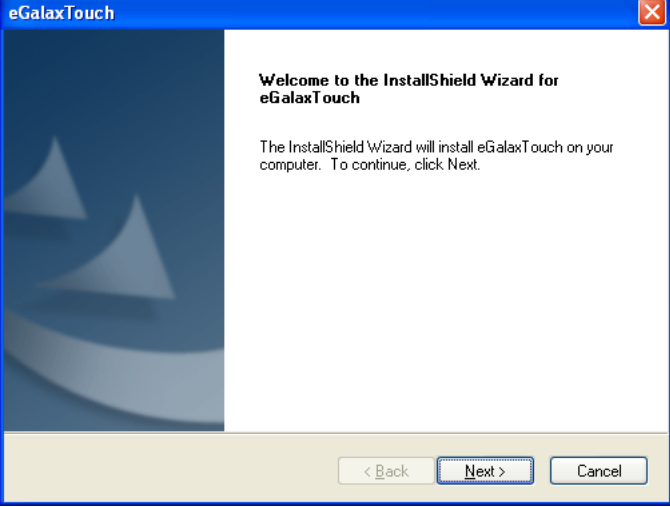
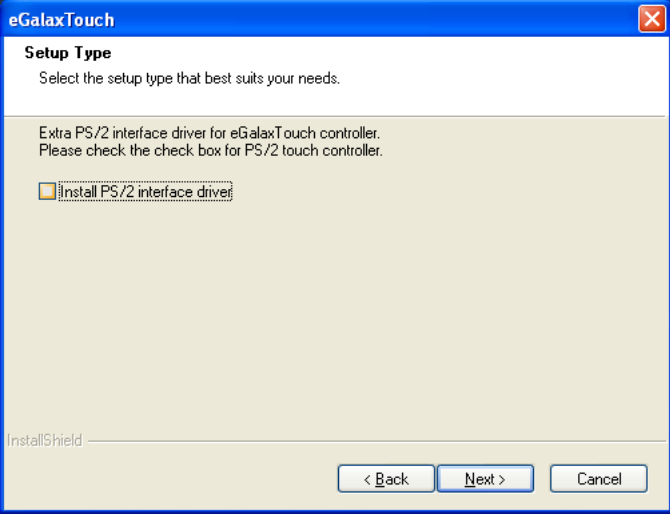


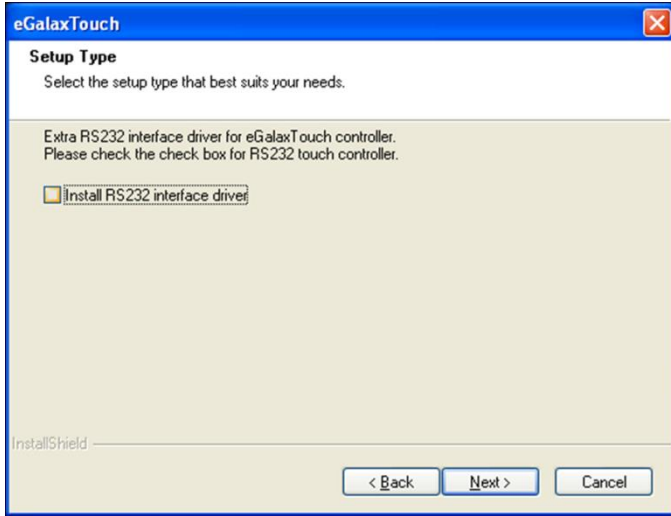
Audio MIC:	Connect audio cable here from microphone.	USB Ports:	Connect a supported USB device here.
Audio OUT:	Connect audio cable here to speakers.	LPT Port:	Connect a supported LPT device here.
VGA Port:	Connect additional computer monitor to this port.	Cash Drawer Port:	Open
Serial Ports:	Connect DB9 to RJ45 Serial cables, for connecting supported serial devices.	Unit Power:	Connect Power cable here.
Ethernet Port:	Connect a network cable here from your modem or router.	12V Accessory Power:	Connect optional devices 12V power supply cable here.

Partner SP-1000 Touchscreen Driver Installation

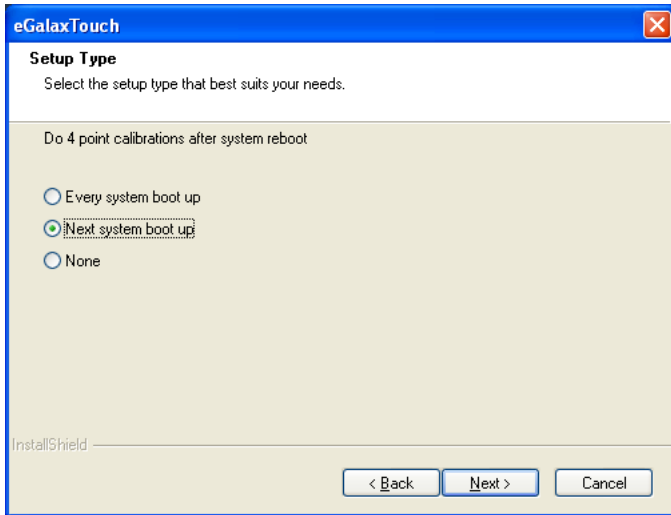
The driver for the touchscreen monitor can be downloaded from:

- http://download2.pcamerica.com/drivers/Manufacturer/Partner/Partner_SP1000_TS.zip

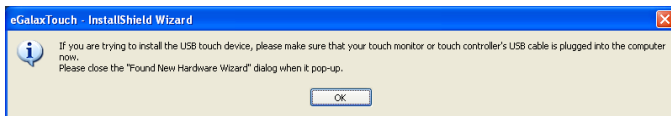
	<p>1. Select Next.</p>
	<p>2. Uncheck Install PS/2 interface driver.</p> <p>3. Select Next.</p>



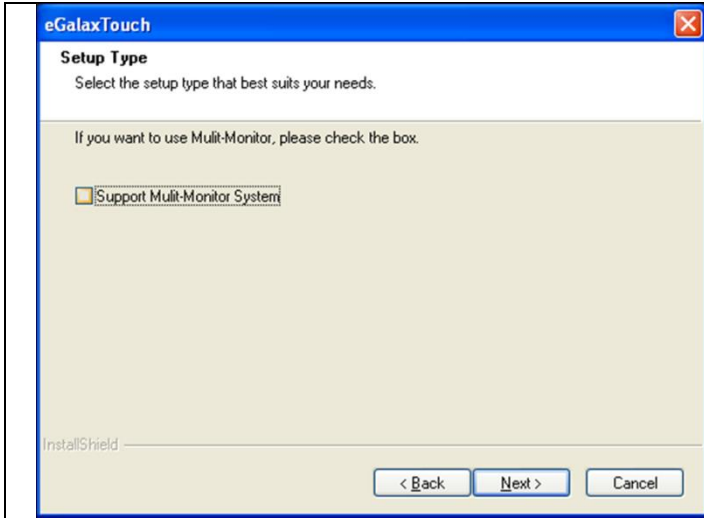
4. Uncheck **Install RS232 interface driver**.
5. Select **Next**.



6. Select **Next system boot up**.
7. Select **Next**.

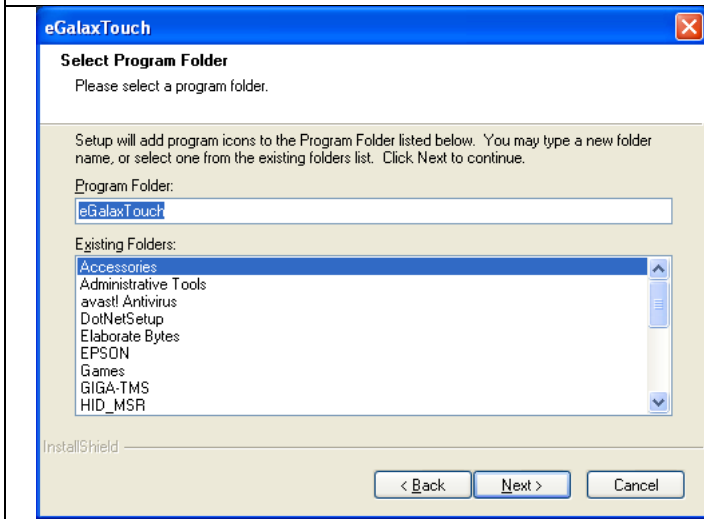


8. Select **OK**.



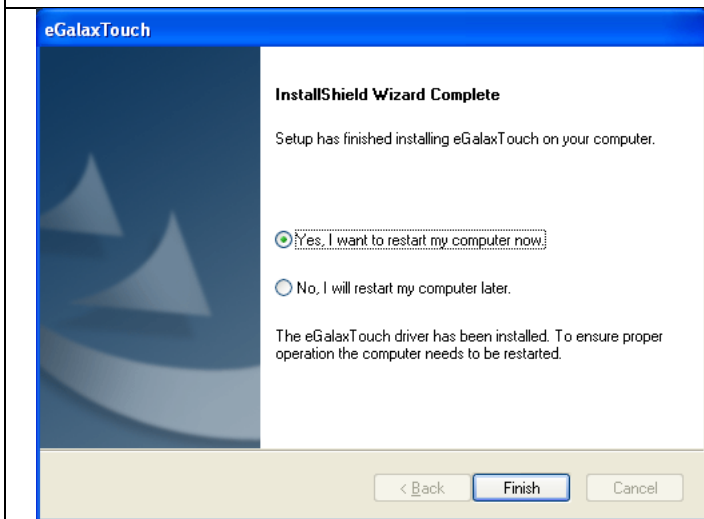
9. Uncheck **Support Multi-Monitor System**.

10. Select **Next**.



11. Select **Next**.

12. Select **Next**.



13. Select **Next**.

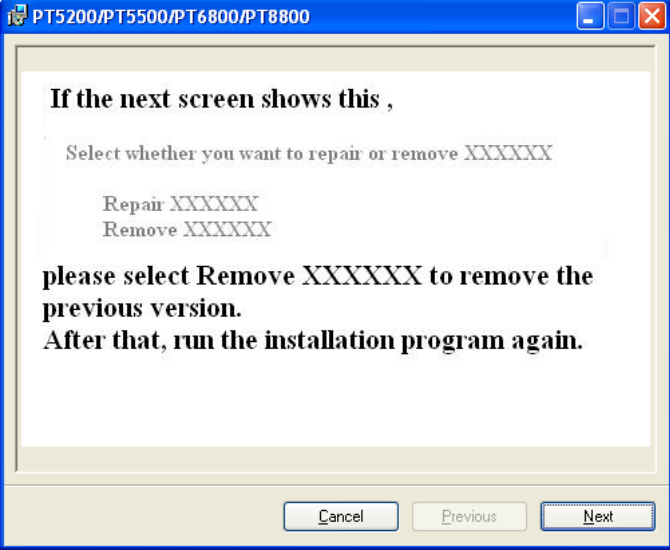
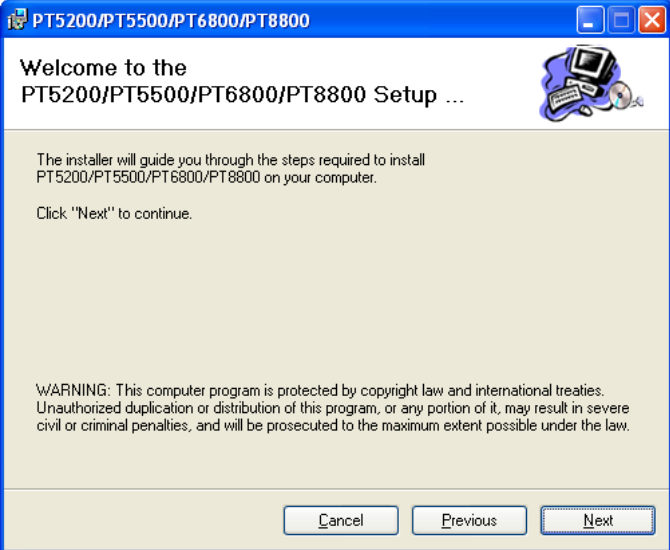
14. v

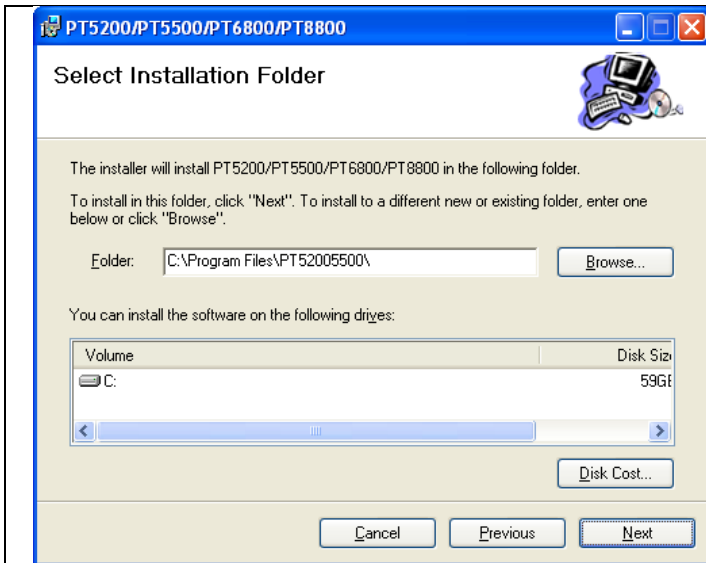
15. Select **Next**.

Partner SP-1000 MSR Driver Installation

The driver for the MSR can be downloaded from:

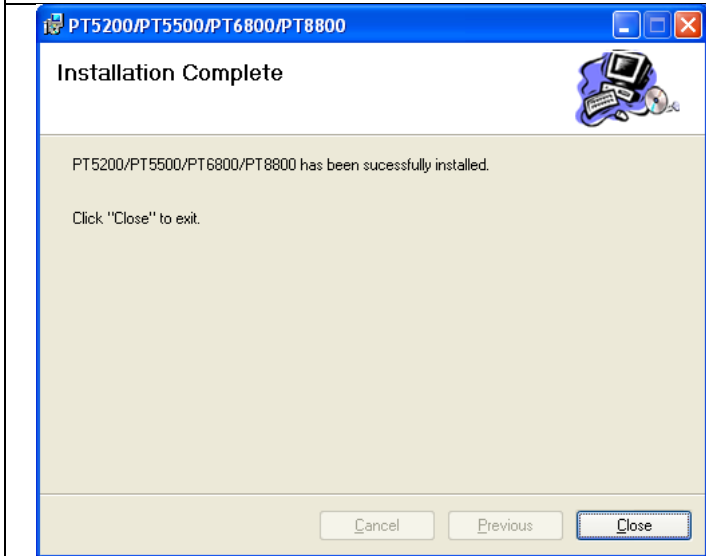
- http://download2.pcamerica.com/drivers/Manufacturer/Partner/Partner_SP1000_MSR.zip

	<p>1. Select Next.</p>
	<p>2. Select Next.</p>



3. Select **Next**.

4. Select **Next**.

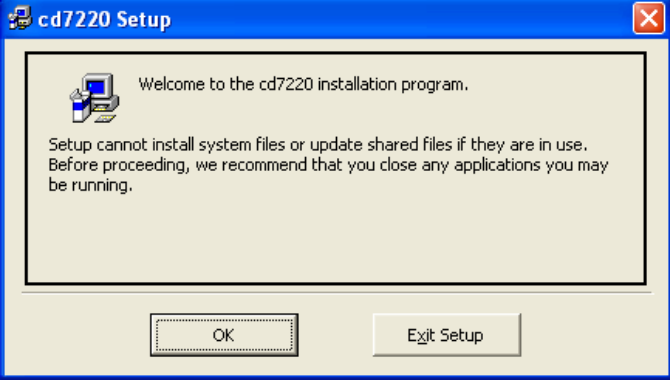
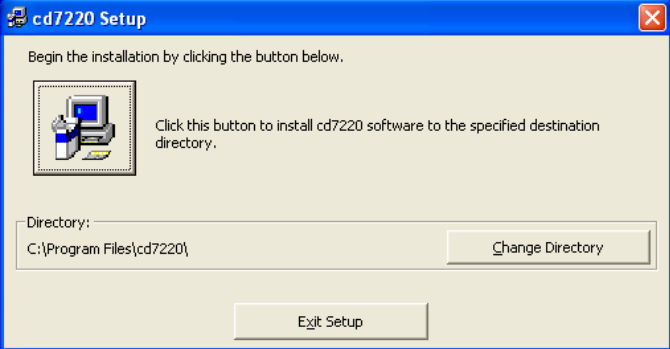
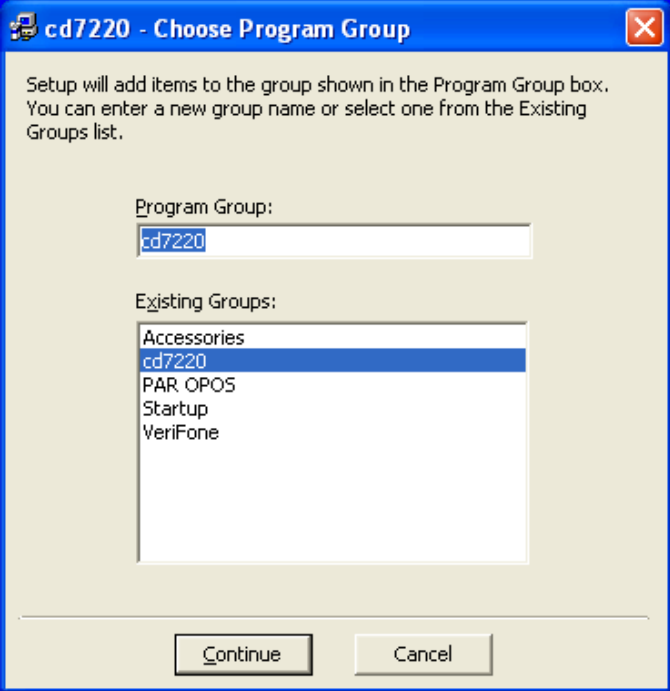


5. Select **Close**.

Partner SP-1000 Pole Display Driver Installation

The driver for the Pole Display can be downloaded from:

- http://download2.pcamerica.com/drivers/Manufacturer/Partner/Partner_SP1000_PD.zip

	<p>1. Select OK.</p>
	<p>2. Select the installation icon.</p>
	<p>3. Select Continue.</p>

Version Conflict



A file being copied is older than the file currently on your system. It is recommended that you keep your existing file.

File name: 'C:\WINDOWS\system32\MSCOMM32.OCX'

Description: 'MSComm'

Your version: '6.0.88.77'

Do you want to keep this file?

Yes

No

No to All

4. If prompted, select **No to All**.

cd7220 Setup



cd7220 Setup was completed successfully.

OK

5. Select **OK**.

Star TSP100 ECO Receipt Printer Driver Installation

For Instructions on installing the Star TSP100 ECO in Windows XP please see below:

- http://faq.pcamerica.com/file-lockers/pdf-locker/Star_TSP100_ECO.pdf

The files required to install the Star ECO Printer in Windows XP can be downloaded from:

- http://download2.pcamerica.com/drivers/POS_for_.Net.exe
- <http://download2.pcamerica.com/drivers/OposCCO.zip>
- http://download2.pcamerica.com/drivers/Manufacturer/Star/StarECOPrinterDriver_32.zip
(32 Bit install)
- http://download2.pcamerica.com/drivers/Manufacturer/Star/StarECOPrinterDriver_64.zip
(64 Bit install)

For Instructions on installing the Star TSP100 ECO in Windows 7 please see below:

- http://faq.pcamerica.com/file-lockers/pdf-locker/Star_TSP100_ECO_Win7.pdf

The files required to install the Star ECO Printer in Windows 7 can be downloaded from:

- http://download2.pcamerica.com/drivers/POS_for_.Net.exe
- http://download2.pcamerica.com/drivers/7/Manufacturer/Star/OposCCOs-1_13_001.zip
- http://download2.pcamerica.com/drivers/7/Manufacturer/Star/Star_TSP100_Win7.exe

Partner SP-1000 Additional Drivers

The driver for the VGA Display can be downloaded from:

http://download2.pcamerica.com/drivers/Manufacturer/Partner/Partner_SP1000_VGA.zip

The driver for the Network Adapter can be downloaded from:

http://download2.pcamerica.com/drivers/Manufacturer/Partner/Partner_SP1000_LAN.zip

The driver for the SP-1000 Chipset can be downloaded from:

http://download2.pcamerica.com/drivers/Manufacturer/Partner/Partner_SP1000_Chip.zip