

One Blue Hill Plaza, 16th Floor, PO Box 1546

Pearl River, NY 10965

1-800-PC-AMERICA, 1-800-722-6374

(Voice) 845-920-0800 (Fax) 845-920-0880

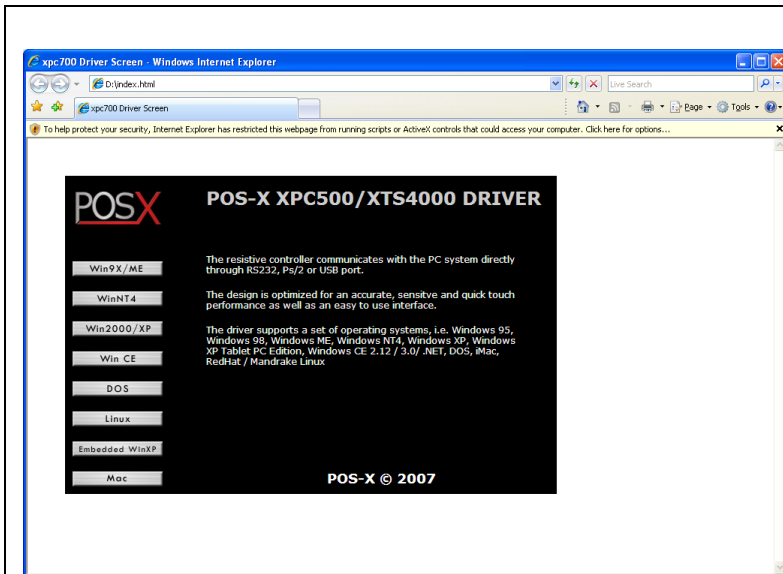
POS-X Touchscreen XTS4000 Installation



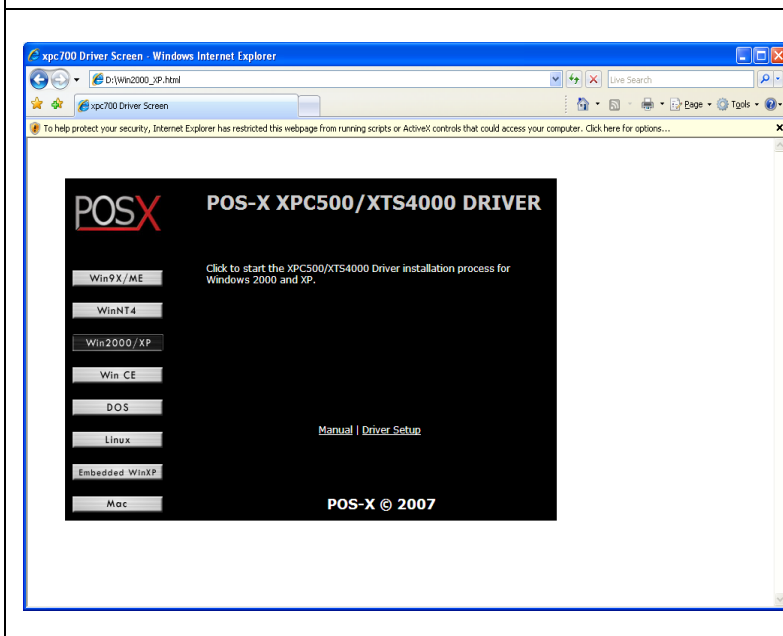
****Before Installation, make sure the USB Cable is unplugged from the back of the computer.****

Installation of Touch Screen Drivers

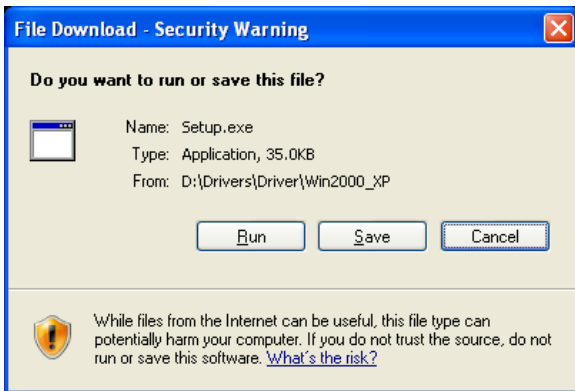
1. Insert CD Labeled XTS4000 XPC500 Driver Disk into your Disk Drive.



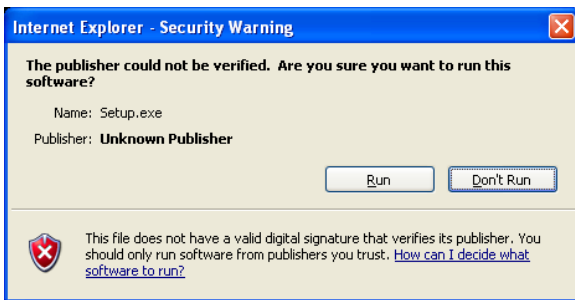
2. Select your operating system (e.g. Win2000/XP).



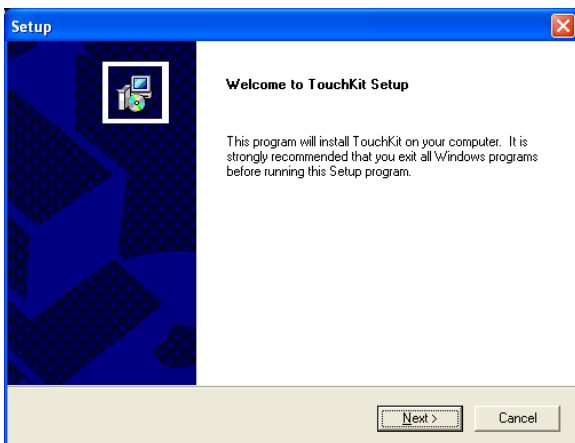
3. Select **Driver Setup**.



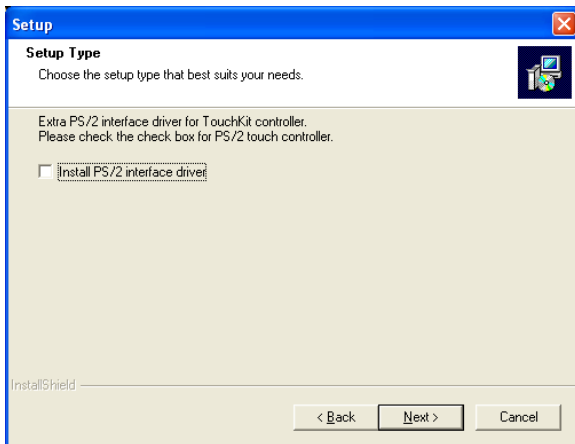
4. Select **Run**.



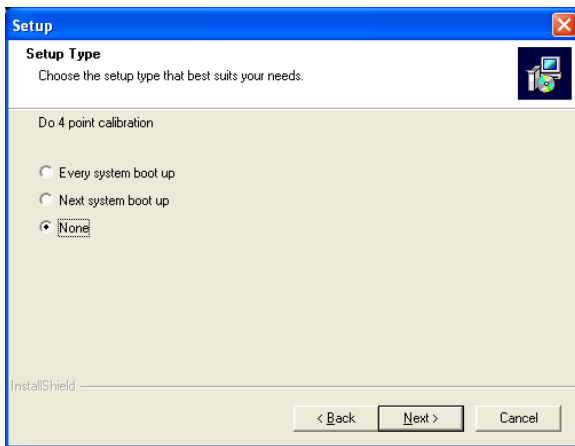
5. Select **Run**.



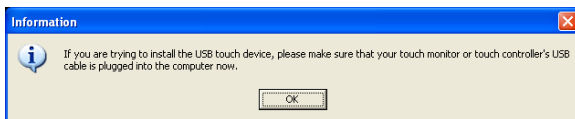
6. Select **Next**.



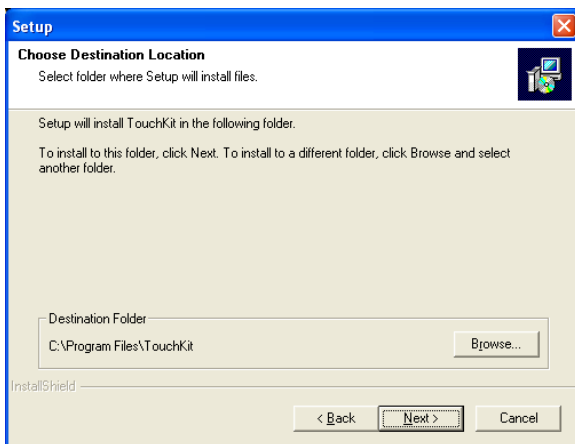
7. Uncheck **Install PS/2 interface driver** and select **Next**.



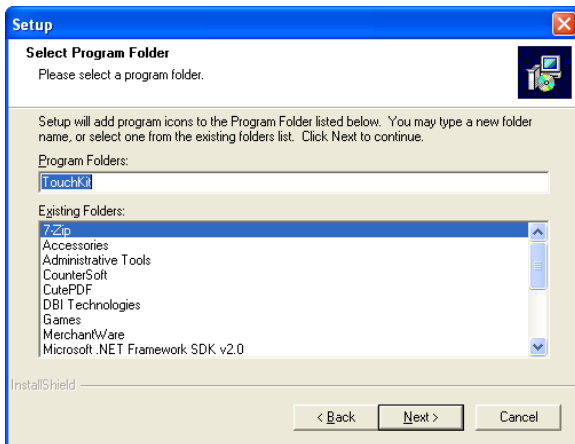
8. Select **None** and select **Next**.



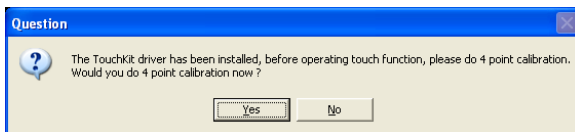
9. Plug the USB cable into the computer and select **Ok**.



10. Select the **Destination Folder** (C:\Program Files\TouchKit - default) and select **Next**.

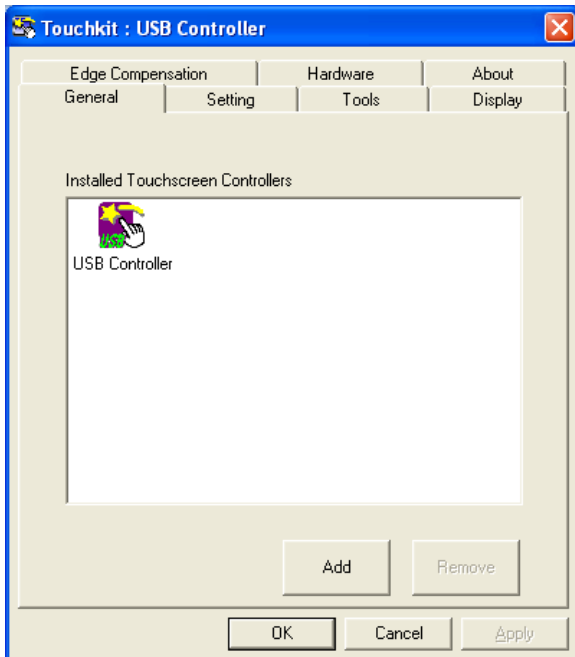


11. Select **Next**.



12. Select **Yes** to Calibrate your touch screen.

13. You must press and hold the Blinking **X**. You should hear two tones, One high and another Low.



14. This is your calibration utility screen which is accessible by right clicking the touch kit icon in the system tray.

15. Select **OK** to Close.

Congratulations you have completed the XTS4000 installation