

POS-X USB-MSR Configuration



In order to work with pcAmerica's software, all MSR's (magnetic swipe readers) need to read from either track 2, or track 1 and track 2. When swiped into notepad a credit card should look like this (including the carriage return);

;1234567891234567=12345678912345678912?

or

%B1234567891234567^TEST CARD^12345678912345678912?

;1234567891234567=12345678912345678912?

If when swiped in notepad the result is different then what is shown above the MSR may require additional configuration to work in CRE/RPE.

Note: POS-X MSRs using ID-Tech Encryption will only work with the payment processor Merchant Warehouse.

For more information on configuring Merchant Warehouse please see the following:

- <http://faq.pcamerica.com/paymentprocessing/merchant-warehouse>

POS-X MSR Configuration Utility Installation



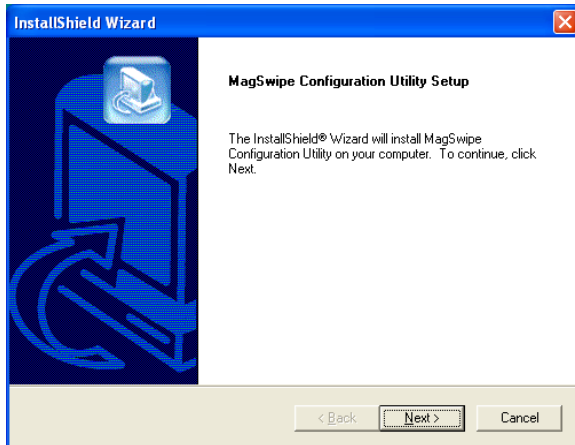
Setup.exe

Install the configuration software (setup.exe).

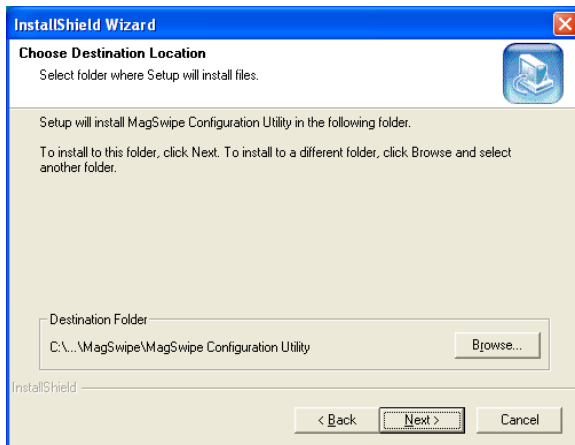
The configuration software can be downloaded at:

- http://download2.pcamerica.com/drivers/POS-X_USB_MSR_Utility.zip

NOTE: The configuration software must be extracted before use.

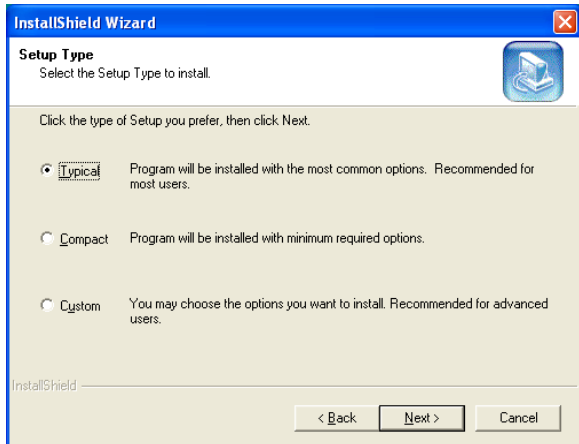


1. Select **Next**.
2. Select **Yes** to accept the terms of the license agreement.
3. Select **Yes** to the information window.

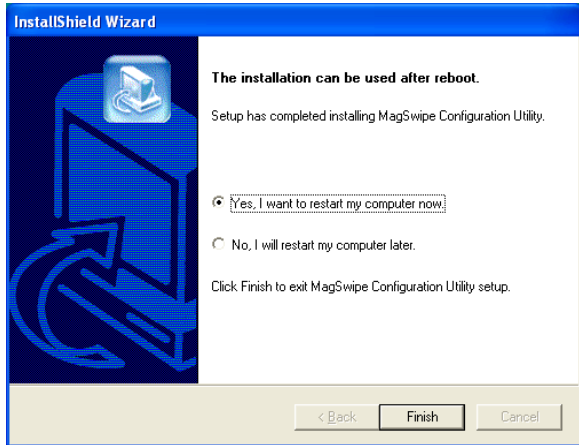


Select the location where you want the install files.

4. Select **Next**.

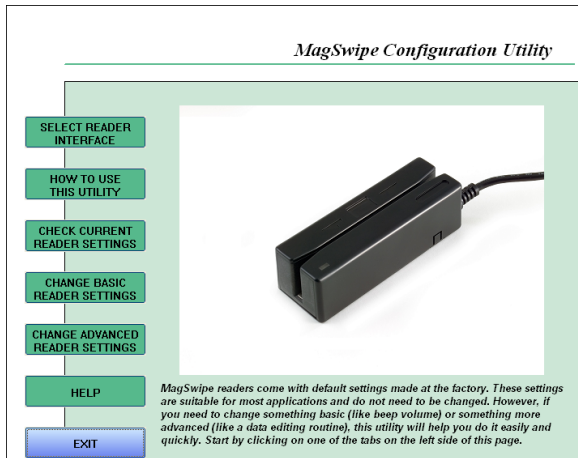


5. Select **Typical** and select **Next**.
6. Select **Next** to start copying the files.

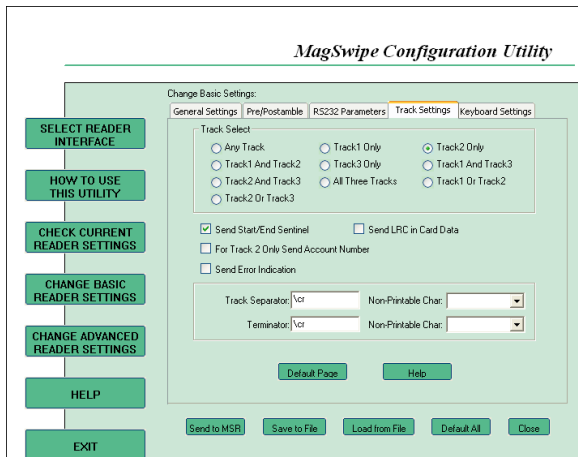


7. Select **Yes, I want to restart my computer now**.
8. Select **Finish**, to finish the installation and restart the computer.

POS-X MSR Configuration



1. Open the **MagSwipe Configuration Utility**, by going to **Start** and **All Programs** then **MagSwipe**.



2. Select **Change Basic Reader Settings** and select the **Track Settings** tab.
3. Under **Track Select**, select one of the following options:
 - **Track2 Only** – This will only read the account information off of the card.
 - **Track1 And Track2** – This will read the account information as well as the customer's name (used for Bar Tabs).
4. Select **Send to MSR**.

You should receive notification that the changes were sent correctly.