

Configuring CRE or RPE to communicate with Mercury Payment Systems in Windows 7/Windows 8



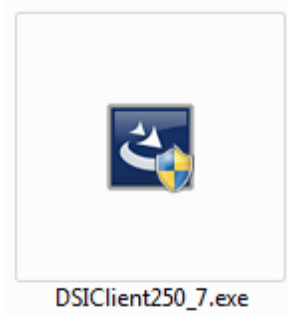
This document contains instructions for installing software necessary for communication with Mercury Payment Systems in Windows 7/Windows 8, and configuring CRE or RPE to communicate with the same. Follow these steps on all stations.

Installing the DSI Client

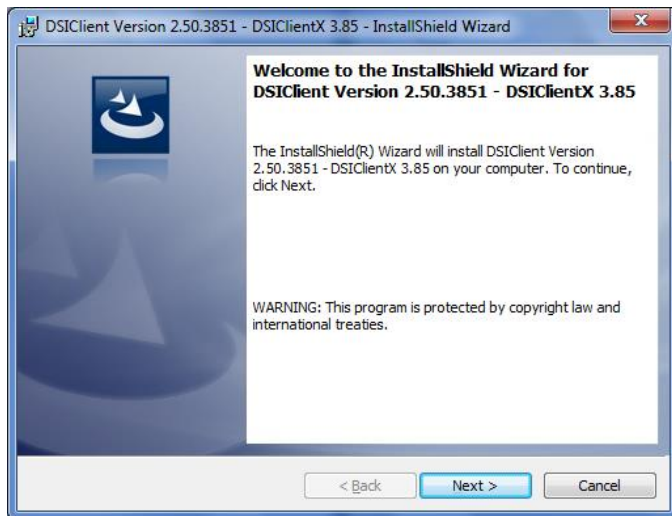
Before configuring CRE or RPE, the DSI Client must be installed.

The Windows 7/Windows 8 version of the DSI client can be downloaded from:

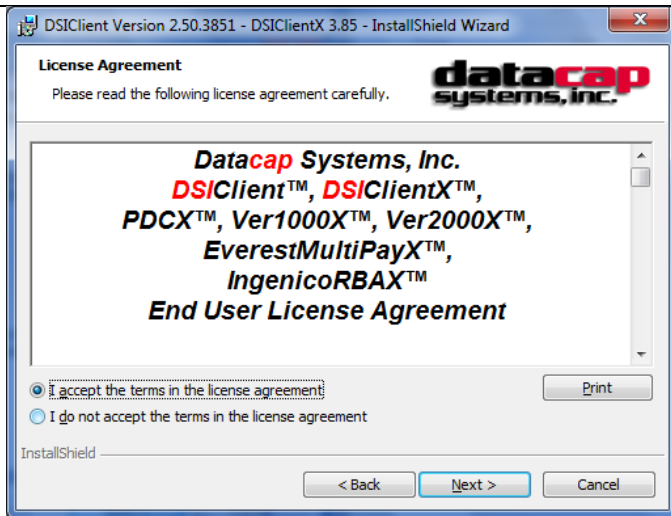
- http://download2.pcamerica.com/drivers/7/Manufacturer/Mercury/DSIClient250_7.zip



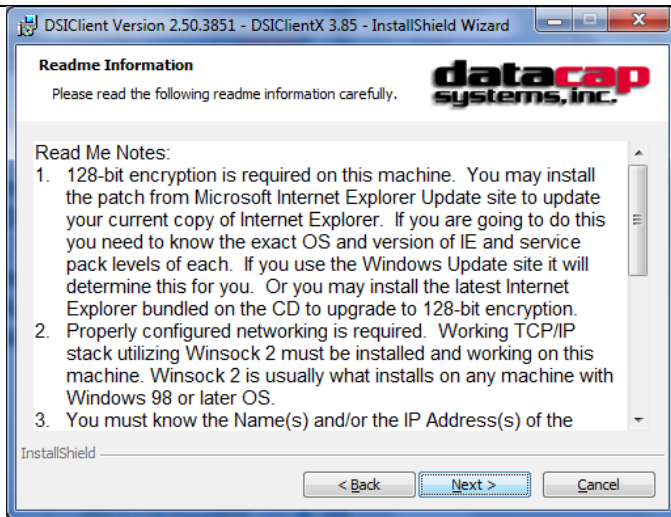
1. After extracting the zip file double-click **DSIClient250_7.exe**.



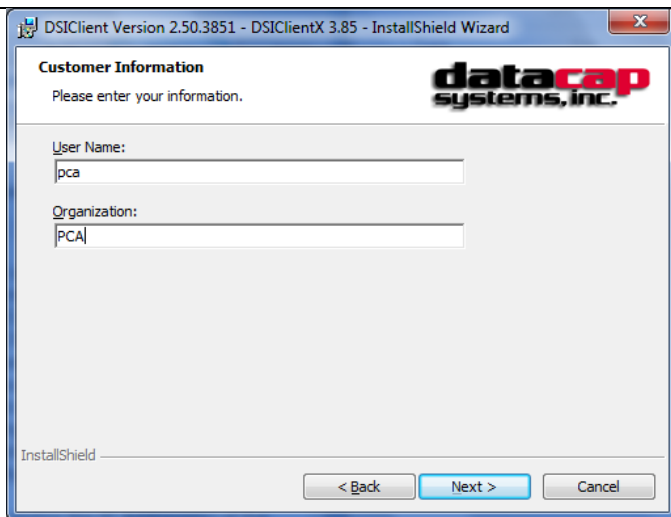
2. When welcomed to the installer, select **Next**.



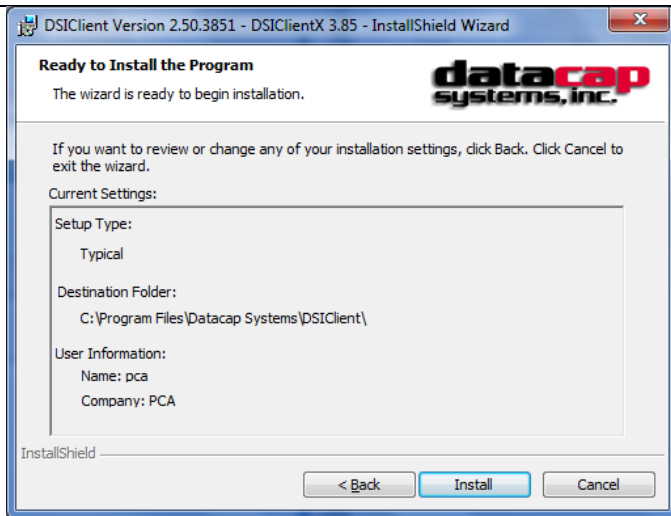
3. Read and accept the license agreement.
4. Select **Next**.



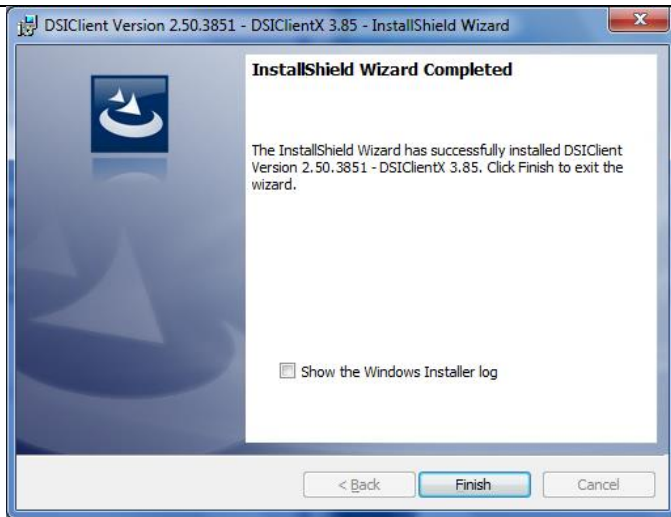
5. Read the readme and select **Next**.



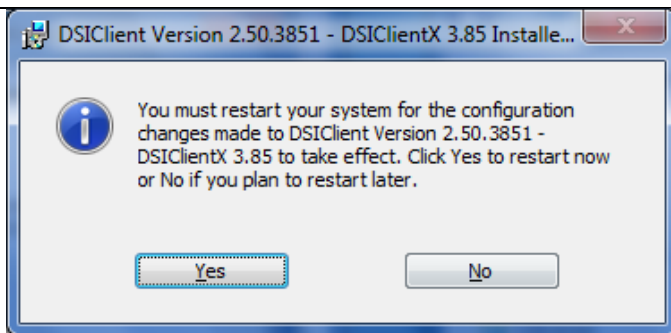
6. Provide a username and organization.
7. Select **Next**.



8. Select **Install** to begin the installation.



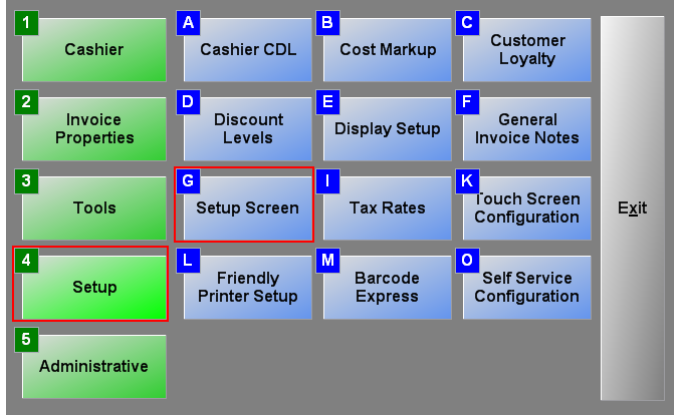
9. Select **Finish** when installation finishes.



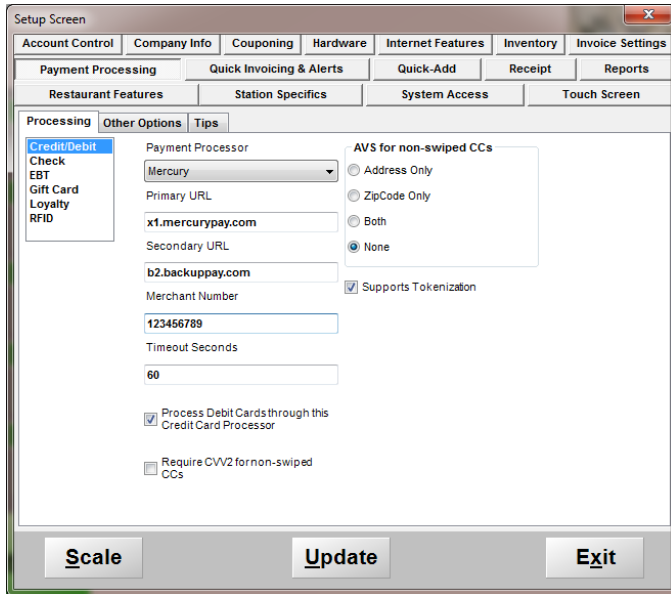
10. Select **Yes** when asked whether to restart your computer.

Configuring CRE or RPE to communicate with Mercury Payment Systems

To configure CRE or RPE to communicate with Mercury Payment Systems, start the program, select **Manager**, provide the requested credentials, and follow these steps.



1. Select **Setup** and then **Setup Screen**.



2. Select the **Payment Processing** tab.
3. Select **Mercury** as the “Payment Processor”.
4. Provide the merchant number provided to you by Mercury Payment Systems.
5. If you would like to use Mercury Payment Systems to process EBT, gift, or loyalty cards, select **EBT**, **Gift Card**, or **Loyalty** and repeat steps 3 and 4.
6. If your account has been provisioned for the use of Tokenization then select **Supports Tokenization**. If the account has not been provisioned for this you will receive error messages when processing transactions.

Update

7. Select **Update** when finished.