

Configuring CRE or RPE to communicate with Mercury Payment Systems

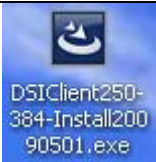
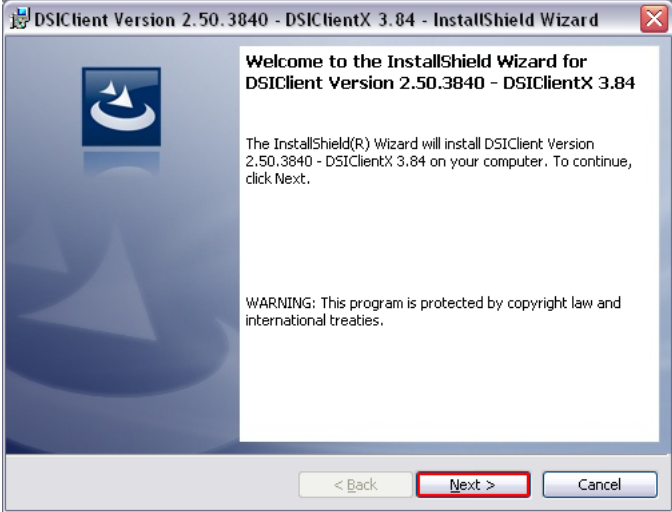
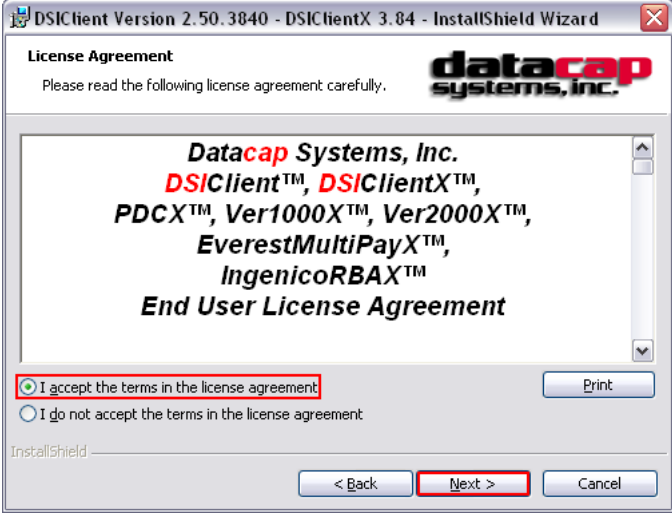


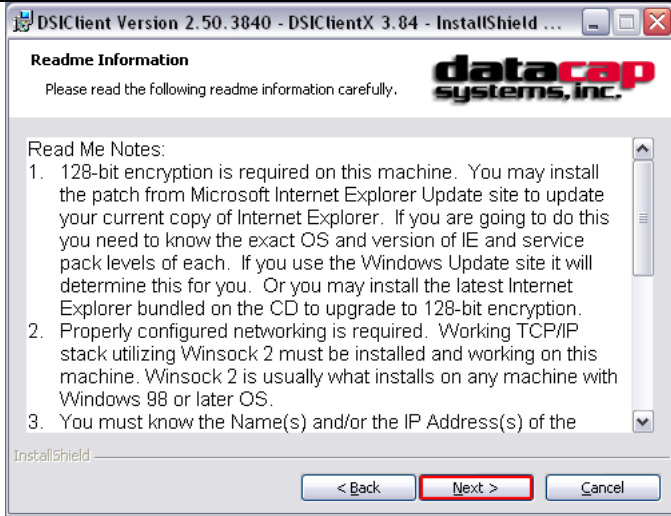
This document contains instructions for installing software necessary for communication with Mercury Payment Systems and configuring CRE or RPE to communicate with the same. Follow these steps on all stations.

Installing the DSI Client

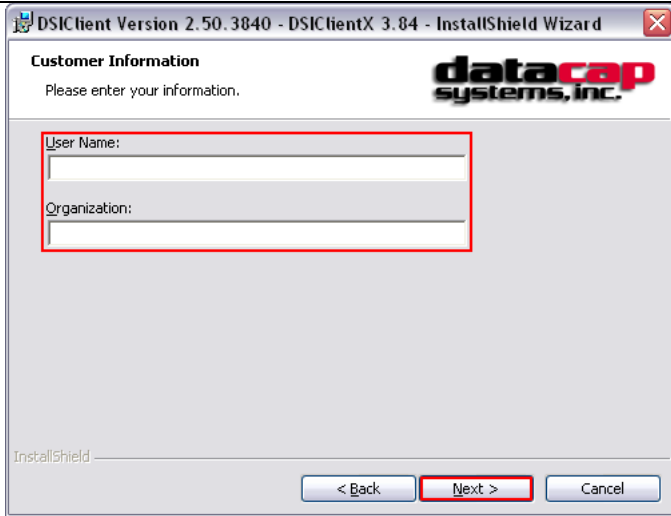
Before configuring CRE or RPE, the DSI Client must be installed. To do so, obtain a file named **DSIClient250-384-Install20090501.exe** (or a newer version) from:

<http://www.datacapay.com/dsIClient.htm> - You will want to download the **DSIClient Application and ActiveX**.

	<ol style="list-style-type: none">1. Double-click DSIClient250-384-Install20090501.exe.
	<ol style="list-style-type: none">2. When welcomed to the installer, select Next.
	<ol style="list-style-type: none">3. Read and accept the license agreement.4. Select Next.



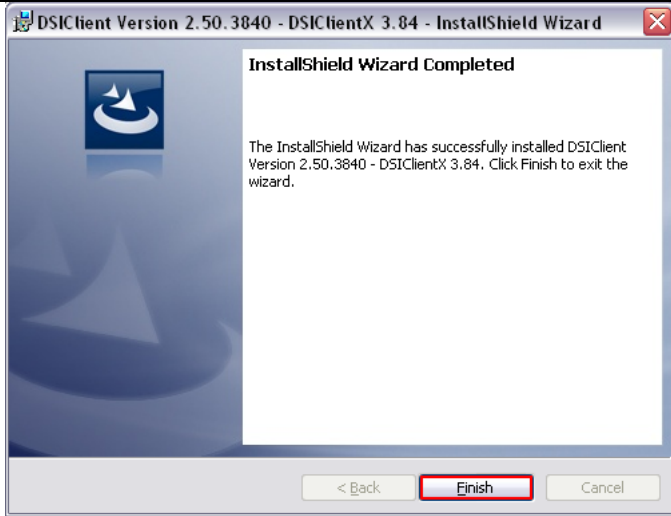
5. Read the readme and select **Next**.



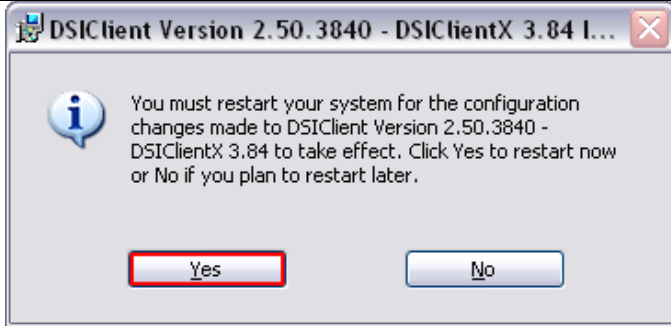
6. Provide a username and organization.
7. Select **Next**.



8. Select **Install** to begin the installation.



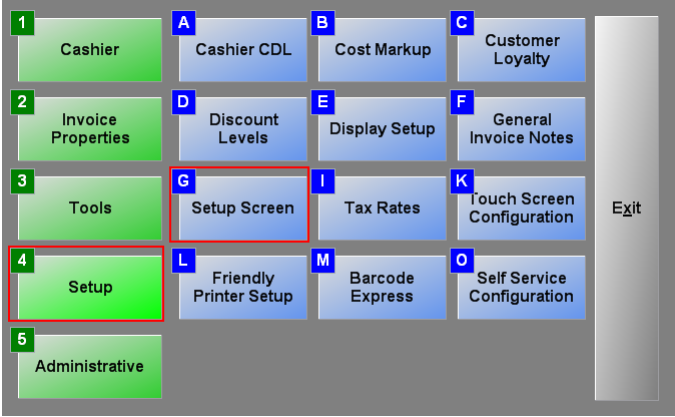
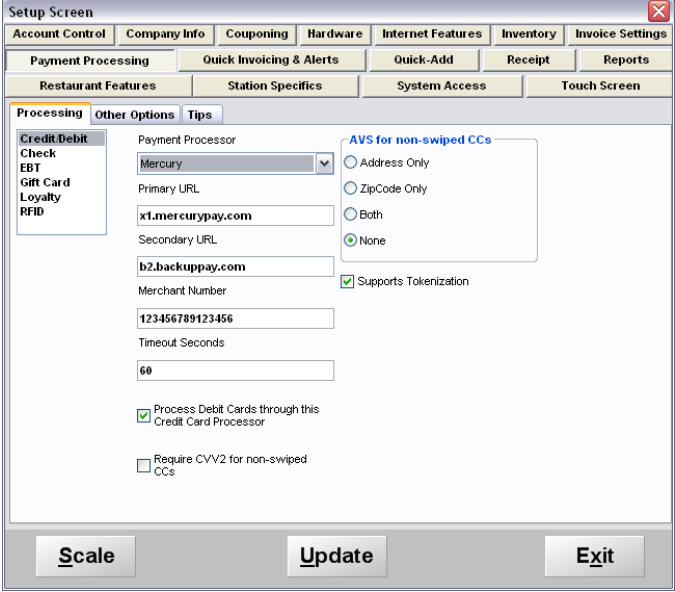

9. Select **Finish** when installation finishes.



10. Select **Yes** when asked whether to restart your computer.

Configuring CRE or RPE to communicate with Mercury Payment Systems

To configure CRE or RPE to communicate with Mercury Payment Systems, start the program, select **Manager**, provide the requested credentials, and follow these steps.

 <p>The screenshot shows a main menu with several options. A red box highlights the 'Setup' option (labeled '4') and the 'Setup Screen' option (labeled 'G'). Other options include 'Cashier', 'Invoice Properties', 'Tools', 'Administrative', 'Cashier CDL', 'Discount Levels', 'Friendly Printer Setup', 'Cost Markup', 'Display Setup', 'Barcode Express', 'Customer Loyalty', 'General Invoice Notes', 'Tax Rates', 'Touch Screen Configuration', 'Self Service Configuration', and 'Exit'.</p>	<ol style="list-style-type: none"> 1. Select Setup and then Setup Screen.
 <p>The screenshot shows the 'Setup Screen' window with the 'Payment Processing' tab selected. The 'Payment Processor' dropdown is set to 'Mercury'. The 'Primary URL' is 'x1.mercurypay.com' and the 'Secondary URL' is 'b2.backupp.com'. The 'Merchant Number' is '123456789123456' and the 'Timeout Seconds' is '60'. The 'AVS for non-swiped CCs' section has 'None' selected. The 'Supports Tokenization' checkbox is checked. There are 'Scale', 'Update', and 'Exit' buttons at the bottom.</p>	<ol style="list-style-type: none"> 2. Select the Payment Processing tab. 3. Select Mercury as the “Payment Processor”. 4. Provide the merchant number provided to you by Mercury Payment Systems. 5. If you would like to use Mercury Payment Systems to process EBT, gift, or loyalty cards, select EBT, Gift Card, or Loyalty and repeat steps 3 and 4. 6. If your account has been provisioned for the use of Tokenization* then select Supports Tokenization. If the account has not been provisioned for this you will receive error messages when processing transactions.
 <p>A close-up of the 'Update' button from the previous screenshot.</p>	<ol style="list-style-type: none"> 7. Select Update when finished.

***Tokenization** – If the account has been provisioned to use this feature, CRE/RPE will not store the encrypted card number in the database. A token ID will be stored in the database instead which is used for settling purposes. To have the account provisioned for tokenization please contact Mercury directly.