

One Blue Hill Plaza, 16th Floor, PO Box 1546

Pearl River, NY 10965

1-800-PC-AMERICA, 1-800-722-6374

(Voice) 845-920-0800 (Fax) 845-920-0880

Logic Controls LD9000 USB Pole Display Installation



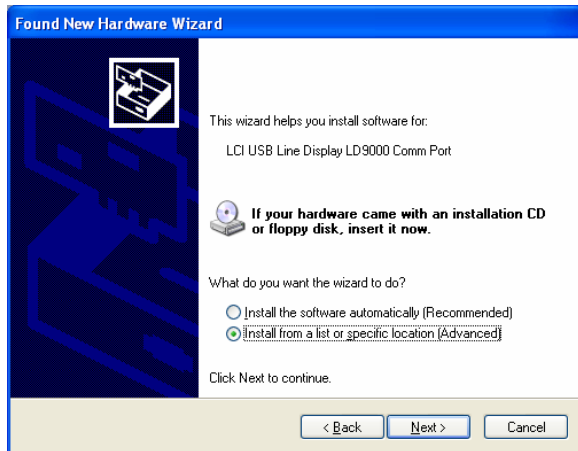
NOTE: You must have administrator access rights on your Windows XP system to install Hardware in Windows XP.

USB / Virtual COM Port driver Installation:

Plug the Pole Display's USB cable into your computer.



1. Windows will automatically detect that new hardware has been plugged into the computer.
2. Select **No, not this time.**
3. Select **Next.**

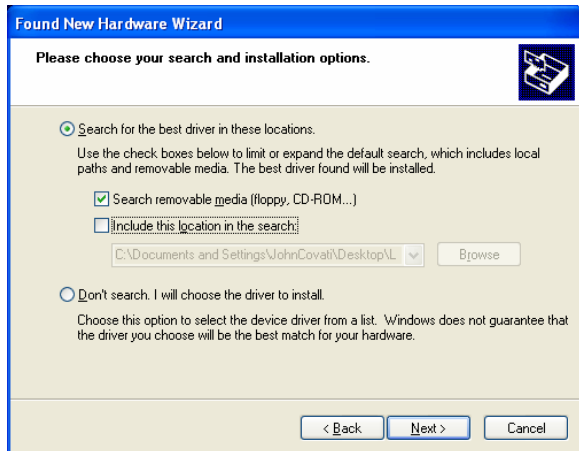


4. Choose to **Install from a list or specific location (Advanced).**
5. Select **Next.**

Before proceeding the drivers must be downloaded and extracted from:

<http://download2.pcamerica.com/drivers/LogicControlsLD9000PoleDisplayDriver.zip>

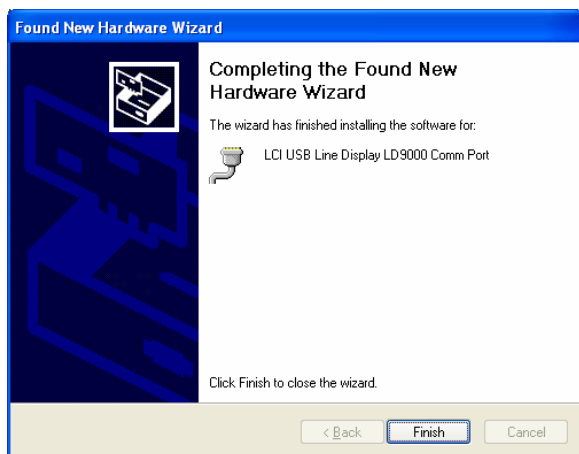
Note: The Logic Control Pole Display Driver files are also located on the RPE/CRE CD.



6. Select **Search for the Best Driver in these locations.**
7. Select **Search removable media (floppy, CD-ROM...)** if using drivers from cd.
8. Select **Include this location in the search** if using drivers downloaded from the internet.
 - Select **Browse.**
 - Locate the extracted folder.
 - Select **OK.**
9. Select **Next.**



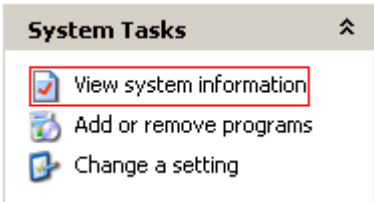

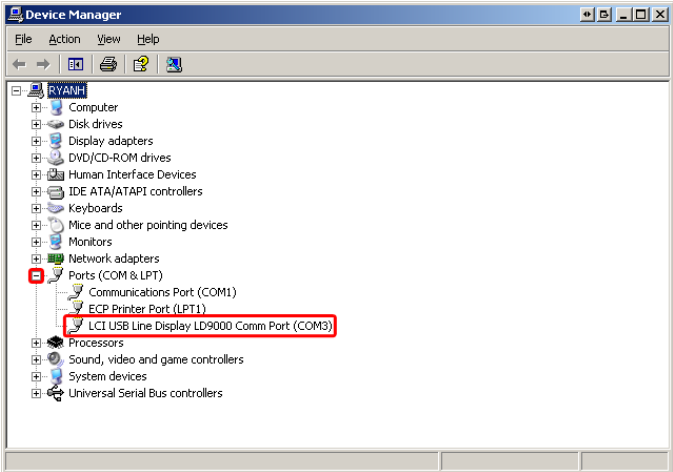


10. Select **Continue Anyway**, and the installation will complete automatically.



11. Once the Hardware Wizard had finished installing the software for the Pole Display select **Finish.**

Determining the COM port that the LD9000 has been installed on

	<p>1. Select Start.</p>
	<p>2. Select My Computer.</p>
	<p>3. Select View system information.</p>
	<p>4. Select the Hardware tab.</p> <p>5. Select Device Manager.</p>
	<p>6. Expand Ports (COM & LPT).</p> <p>7. Make a note of the COM port being used by the LCI USB Line Display LD9000 Comm Port (COM3).</p>

After the Installation has completed start the Cash Register Express/Restaurant Pro Express program.

Configuring CRE/RPE

The screenshot shows the 'Setup Screen' window with the 'Hardware' tab selected. The window has a menu bar with tabs: Account Control, Company Info, Couponing, Hardware, Internet Features, Inventory, and Invoice Settings. Below the menu bar are sub-tabs: Payment Processing, Quick Invoicing & Alerts, Quick-Add, Receipt, and Reports. Further down are Restaurant Features, Station Specifics, System Access, and Touch Screen. The main area is divided into four columns: Pole Display Port, PinPad Port, Weight Scale - Primary, and Weight Scale - Secondary. Each column has radio buttons for 'None', 'COM1', 'COM2', 'COM3', 'COM4', 'COM5', 'COM6', 'USB', and 'Other'. The 'Pole Display Port' column has 'COM3' selected. Below these columns are sections for 'Pole Display Type' (with 'General' selected), 'PinPad Type' (set to 'None'), 'PinPad Connection' (set to 'Serial'), 'PinPad IP Address', 'PinPad IP Port' (set to '0'), 'Cash Drawer' (with 'Open Default Drawer' selected), and 'Default Cash Drawer Port' (set to 'NONE'). There are also checkboxes for 'Check drawer open status (Epson only)'. At the bottom of the window are three buttons: 'Scale', 'Update', and 'Exit'.

1. Select the **Options/Manager** and enter your password (where applicable).
2. Select **Setup** and then **Setup Screen** and re-enter your password if necessary.
3. Select the **Hardware** tab and choose the correct COM port for the **Pole Display Port**.
4. Under **Pole Display Type** select **General**.
5. Select **Update** at the bottom of the screen to save your changes.

Now login to CRE/RPE and enter an item onto the Invoice and check the Pole Display, it should show the item you just rang up.

Your USB Pole Display is now setup and ready to be used.