

Logic Controls LD9000 USB Pole Display Installation in Windows 8 (32/64BIT)



NOTE: You must have administrator access rights on your Windows 8 system to install hardware.

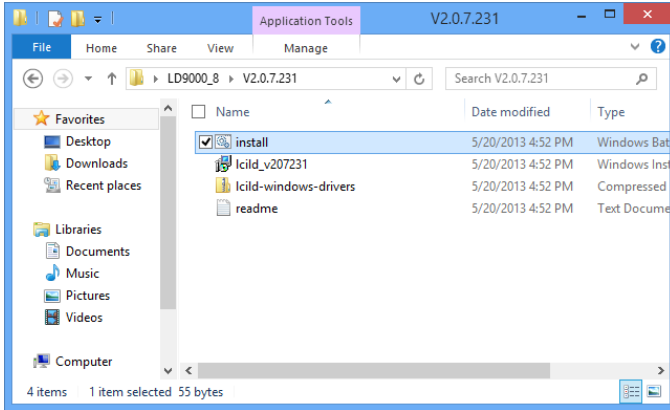
****MAKE SURE THE DEVICE IS UNPLUGGED FOR THE DRIVER INSTALLATION****

USB / Virtual COM Port driver Installation:

If the Pole Display is connected to your computer please disconnect it at this time.

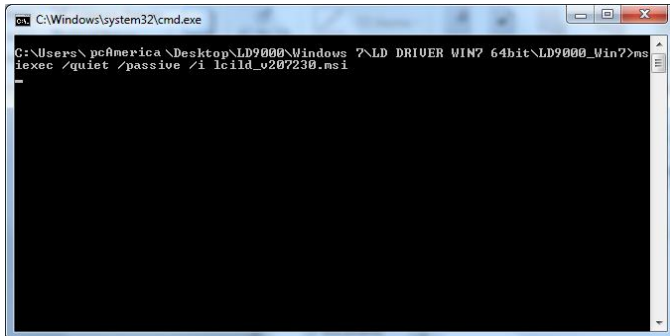
Please download the driver for the pole display from:

- http://download2.pcamerica.com/drivers/Manufacturer/Logic_Controls/LD9000_8.zip

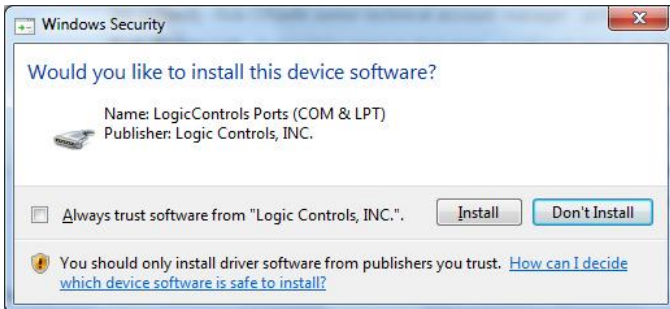


1. Run the file named **install.bat**.

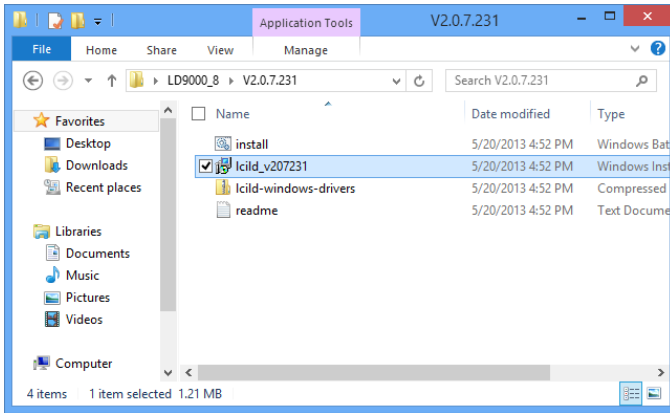
Note: It may be required to right-click (or hold down shift and right-click) then select **Run as Administrator**.



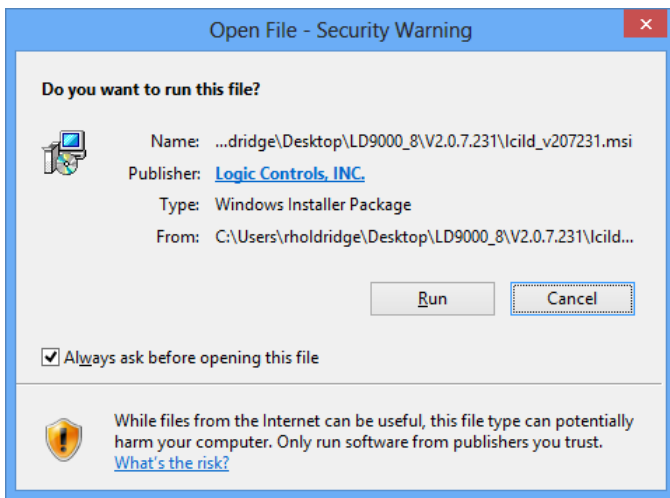
2. During the installation process you may see some screens as well as be asked to allow the installer to continue.



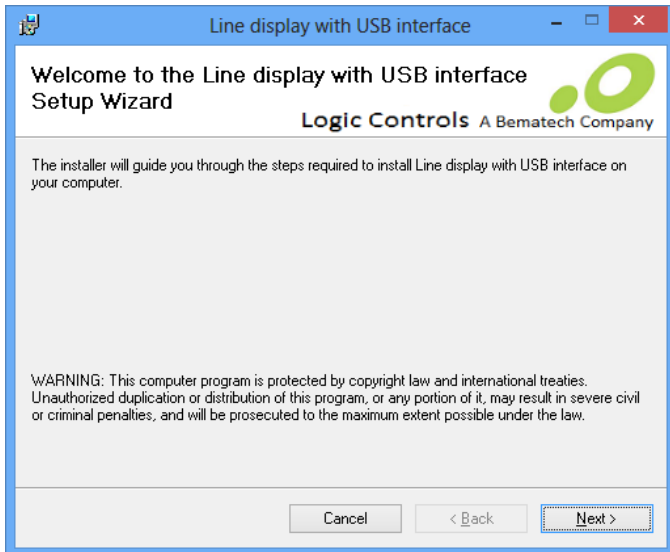
3. When prompted Select **Install**.



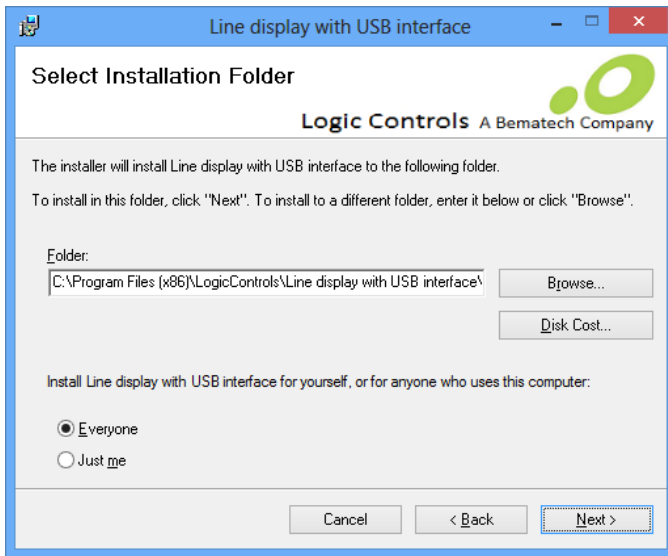
4. Run the file named **Icild_v207231.msi**.



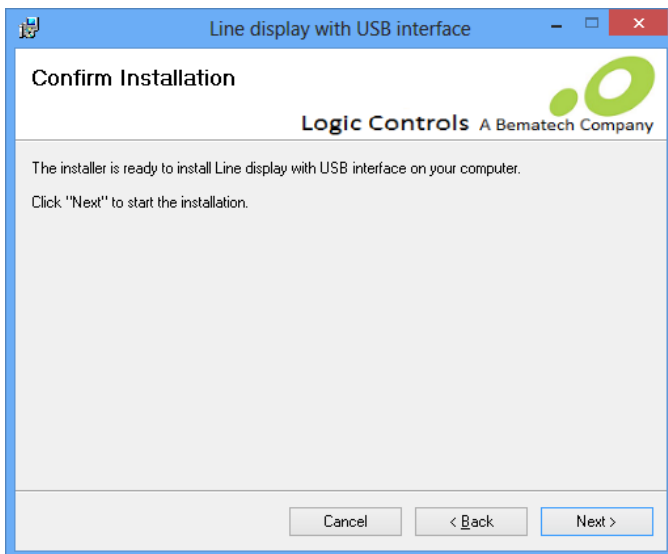
5. If prompted select **Run**.



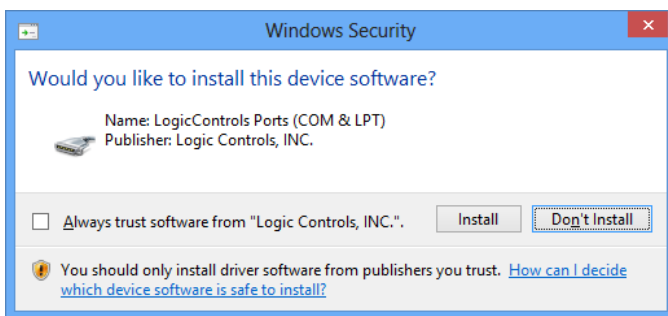
6. Select **Next**.



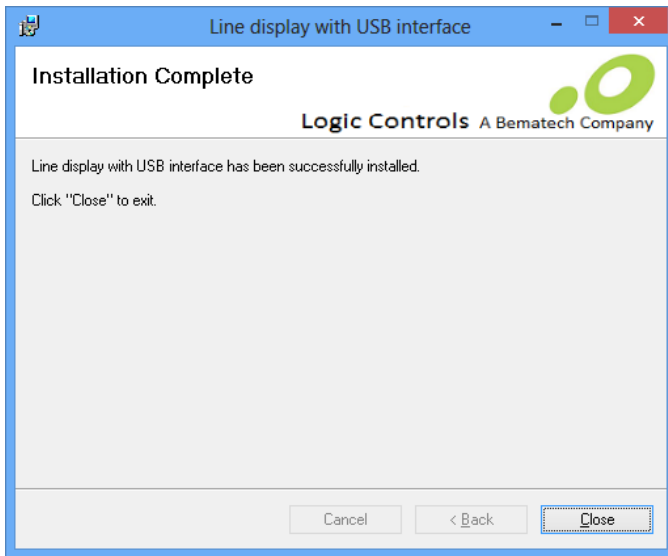
7. Select **Next**.



8. Select **Next**.



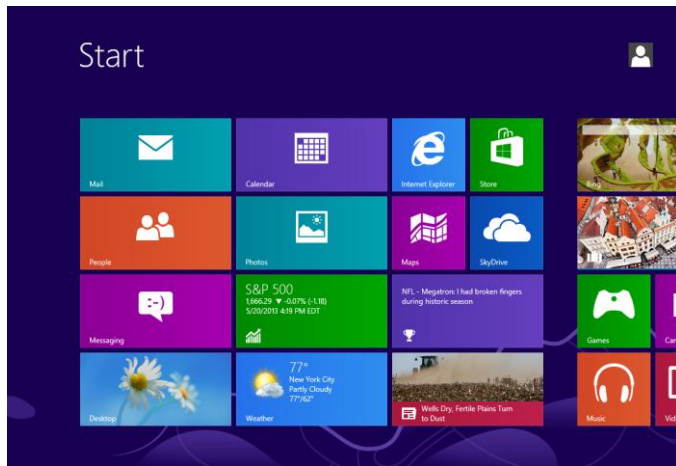
9. Select **Install**.



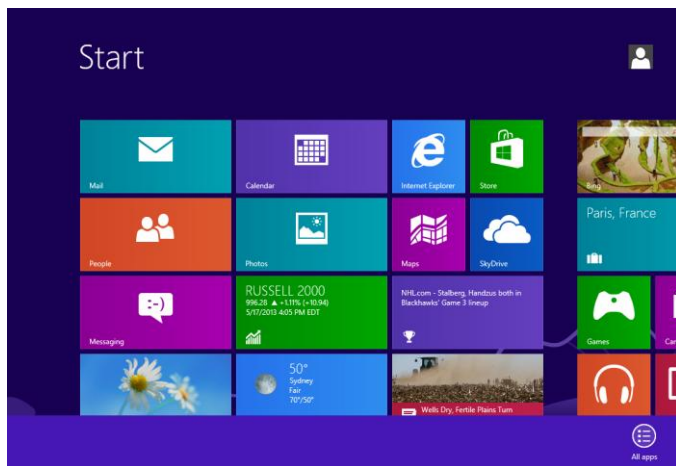
10. Select **Close**.

****At this point of the installation process, please connect the pole display to the computer.****

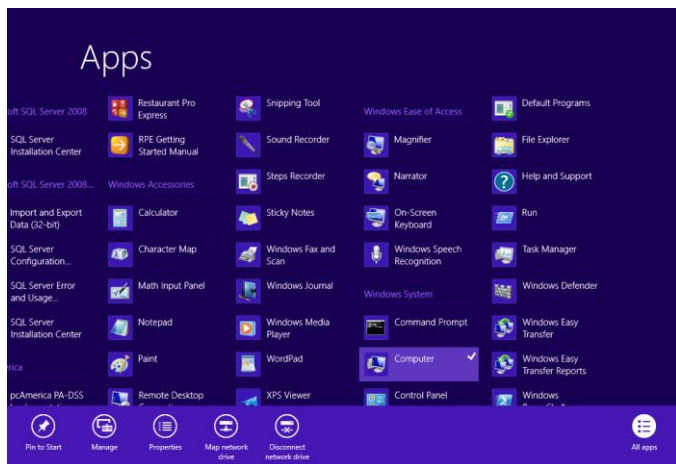
Determining the COM port that the LD9000 has been installed on



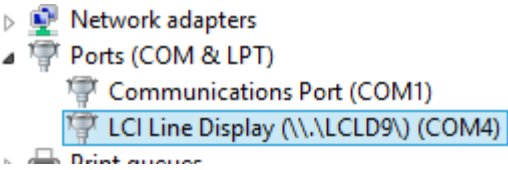
1. Open the **Start Menu**.



2. Right-click on any available area on this screen and select **All apps**.



3. Right-click **Computer** and then select **Manage**.

 <p>The screenshot shows the Windows Device Manager window. The 'Ports (COM & LPT)' category is expanded, showing 'Communications Port (COM1)' and 'LCI Line Display (\\.\LCLD9\) (COM4)'. The 'LCI Line Display' device is highlighted with a blue selection box.</p>	<ol style="list-style-type: none">4. Select Device Manager.5. Expand Ports (COM & LPT).6. Make a note of the COM port being used by the LCI USB Line Display (\\.\LCLD9\) (COM4).
---	--

After the Installation has completed start the Cash Register Express/Restaurant Pro Express program.

Configuring CRE/RPE

The screenshot shows the 'Setup Screen' window with the 'Hardware' tab selected. The window has a menu bar at the top with options: Account Control, Company Info, Couponing, Hardware, Internet Features, Inventory, Invoice Settings, Payment Processing, Quick Invoicing & Alerts, Quick-Add, Receipt, Reports, Restaurant Features, Station Specifics, System Access, and Touch Screen. Below the menu bar are three page tabs: Page 1, Page 2, and Page 3. The main area is divided into several sections:

- Pole Display Port:** Radio buttons for None, COM1, COM2, COM3, **COM4** (selected), COM5, USB, and Other.
- Pole Display Type:** Radio buttons for **General** (selected), Sharp / Touch Dynamic, Virtual(Classic), Posiflex, Toshiba, OPOS, and Virtual(New).
- OPOS Pole Display PoleDisplay Port:** A dropdown menu currently set to NONE.
- PinPad Port:** Radio buttons for **None** (selected), COM1, COM2, COM3, COM4, COM5, COM6, and Other.
- PinPad Type:** A dropdown menu set to None.
- PinPad Connection:** A dropdown menu set to Serial.
- PinPad IP Address:** A text input field.
- PinPad IP Port:** A text input field set to 0.
- Weight Scale - Primary:** Radio buttons for **None** (selected), COM1, COM2, COM3, COM4, COM5, COM6, and Other.
- Primary Scale Type:** A dropdown menu set to CAS PD-1 or PD-2.
- Weight Scale - Secondary:** Radio buttons for **None** (selected), COM1, COM2, COM3, COM4, COM5, COM6, and Other.
- Secondary Scale Type:** A dropdown menu set to CAS PD-1.
- Cash Drawer:** Radio buttons for **Open Default Drawer** (selected) and Open Employee Drawer.
- Default Cash Drawer Port:** A dropdown menu set to NONE.
- Checkboxes for 'Check drawer open status (Epson TM-T88 only)' and 'Use alternate cash drawer status check'.

At the bottom of the screen are three buttons: **Scale**, **Update**, and **Exit**.

1. Select the **Options/Manager** and enter your password (where applicable).
2. Select **Setup** and then **Setup Screen** and re-enter your password if necessary.
3. Select the **Hardware** tab and choose the correct COM port for the **Pole Display Port**.
4. Under **Pole Display Type** select **General**.
5. Select **Update** at the bottom of the screen to save your changes.

Now login to CRE/RPE and enter an item onto the Invoice and check the Pole Display, it should show the item you just rang up.

Your USB Pole Display is now setup and ready to be used.