

One Blue Hill Plaza, 16th Floor, PO Box 1546

Pearl River, NY 10965

1-800-PC-AMERICA, 1-800-722-6374

(Voice) 845-920-0800 (Fax) 845-920-0880

Logic Control Id9000 USB Pole Display Installation in Windows 7 (32/64BIT)



NOTE: You must have administrator access rights on your Windows 7 system to install Hardware.

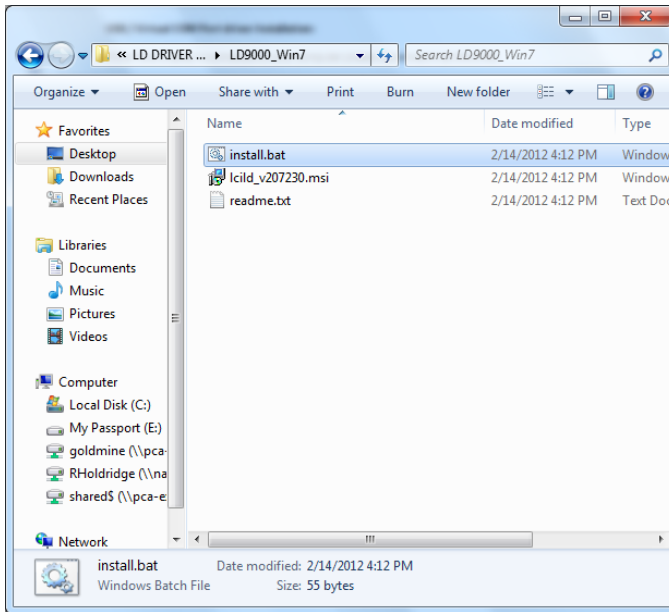
****MAKE SURE THE DEVICE IS UNPLUGGED FOR THE DRIVER INSTALLATION****

USB / Virtual COM Port driver Installation:

If the Pole Display is connected to your computer please disconnect it at this time.

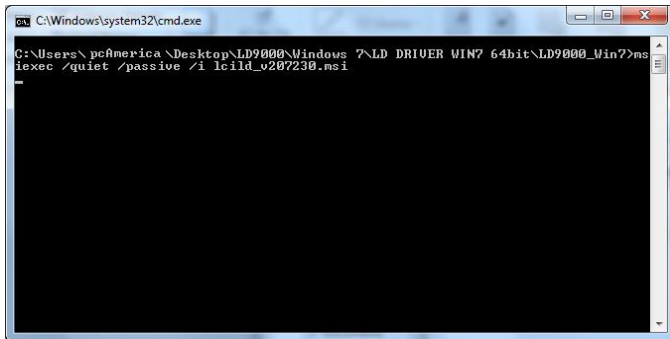
Please download the driver for the pole display from:

http://download2.pcamerica.com/drivers/Manufacturer/Logic_Controls/LD9000_Drivers.zip

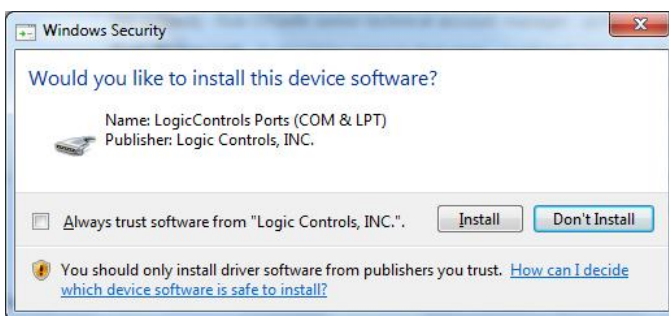


1. Run the file named **install.bat**.

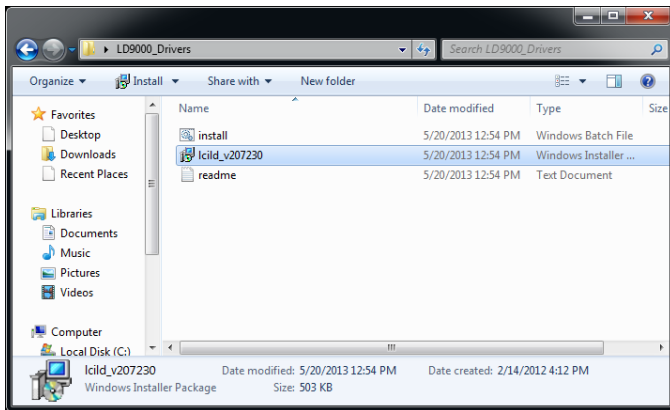
Note: It may be required to right-click (or hold down shift and right-click) then select **Run as Administrator**.



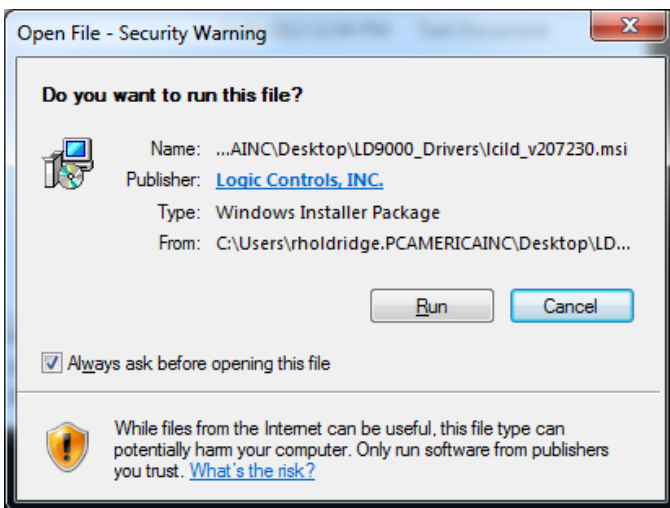
2. During the installation process you may see some screens as well as be asked to allow the installer to continue.



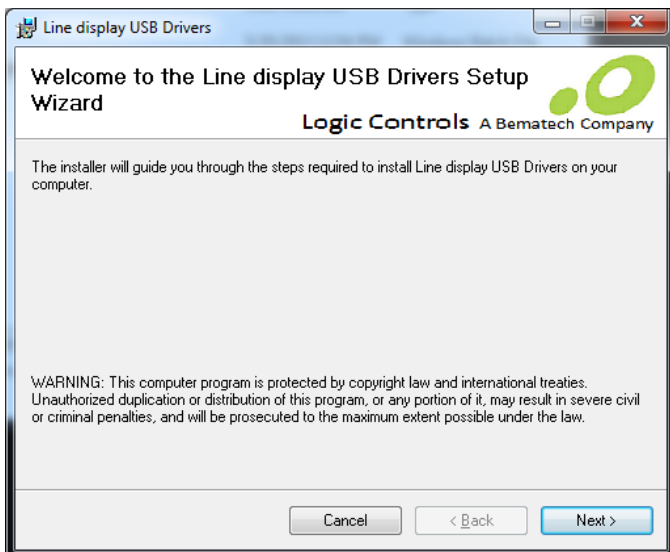
3. When prompted Select **Install**.



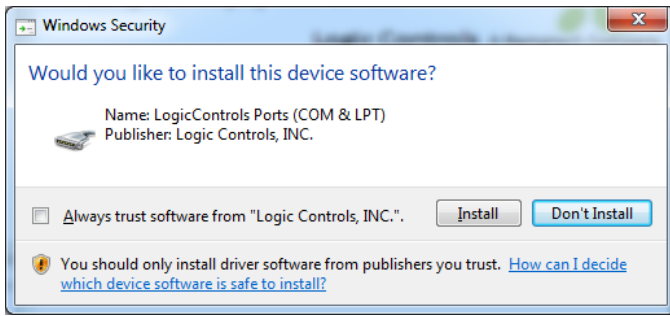
4. Run the file named **Icild_v207230.msi**.



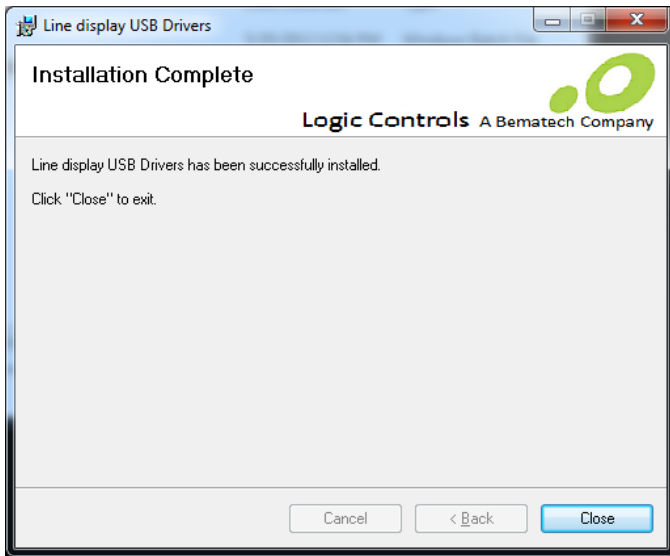
5. If prompted select **Run**.



6. Select **Next**.



7. Select **Install**.



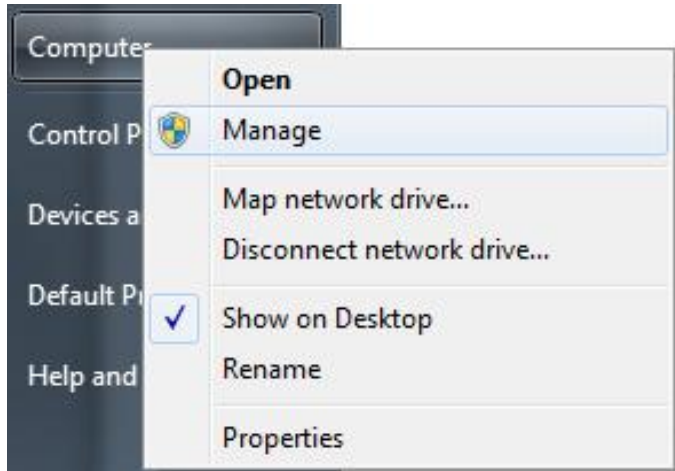
8. Select **Close**.

****At this point of the installation process, please connect the pole display to the computer.****

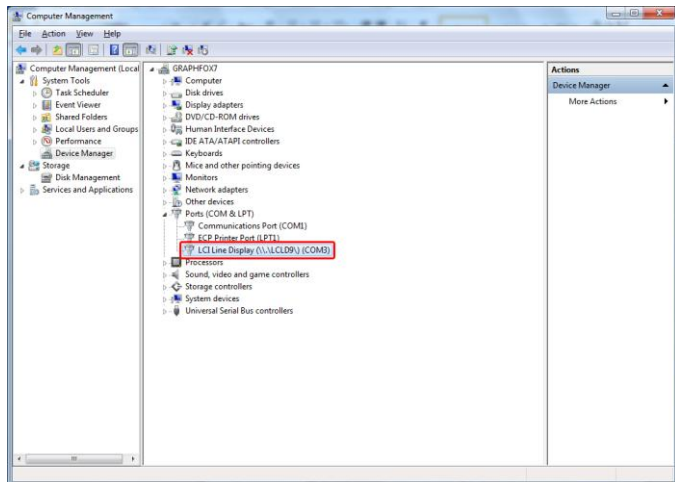
Determining the COM port that the LD9000 has been installed on



1. Select **Start**.



2. Right-click **Computer** and then select **Manage**.



3. Expand **Ports (COM & LPT)**.

4. Make a note of the COM port being used by the **LCI USB Line Display (\\.\LCLD9) (COM3)**.

Setting the Pole Display in CRE/RPE's Setup Screen

The screenshot shows the 'Setup Screen' window with the 'Hardware' tab selected. The 'Pole Display Port' is set to 'COM3'. The 'Pole Display Type' is set to 'General'. The 'PinPad Port' is set to 'None'. The 'PinPad Type' is set to 'None'. The 'PinPad Connection' is set to 'Serial'. The 'PinPad IP Address' is set to '0'. The 'Primary Scale Type' is set to 'CAS PD-1 or PD-2'. The 'Secondary Scale Type' is set to 'CAS PD-1'. The 'Cash Drawer' is set to 'Open Default Drawer'. The 'Default Cash Drawer Port' is set to 'NONE'. The 'Check drawer open status (Epson TM-T88 only)' checkbox is unchecked. At the bottom of the screen, there are three buttons: 'Scale', 'Update', and 'Exit'.

1. Select the **Options/Manager** and enter your password (where applicable).
2. Select **Setup** and then **Setup Screen** and re-enter your password if necessary.
3. Select the **Hardware** tab and choose the correct COM port for the **Pole Display Port**.
4. Under **Pole Display Type** select **General**.
5. Select **Update** at the bottom of the screen to save your changes.

Now login to CRE/RPE and enter an item onto the Invoice and check the Pole Display, it should show the item you just rang up.

Your USB Pole Display is now setup and ready to be used.