

Setting up the Logic Controls LV4000 USB Connected Virtual Pole Display in Windows 8 and 10



This document covers the installation for the Logic Controls Virtual Pole Display with a USB connection.

TABLE OF CONTENTS

<u>CONNECTING THE POLE DISPLAY TO THE COMPUTER</u>	3
<u>INSTALLING THE USB DRIVER</u>	4
<u>CONFIGURING THE MONITOR SETUP.</u>	6
<u>REMOVING THE TASKBAR ON SECOND SCREEN:</u>	7
<u>ENABLING THE VIRTUAL POLE DISPLAY IN CRE/RPE</u>	8
<u>CREATING THE COMMON IMAGES FOLDER</u>	9
<u>CONFIGURING THE POLE DISPLAY</u>	10
<u>SAMPLE POLE DISPLAY SCREENS</u>	13

Connecting the Pole Display to the Computer



1. There will be one cable to install the pole display.
 - **Cable 1** is a USB connection.
 - Connect **Cable 1** into an available USB port on your computer.

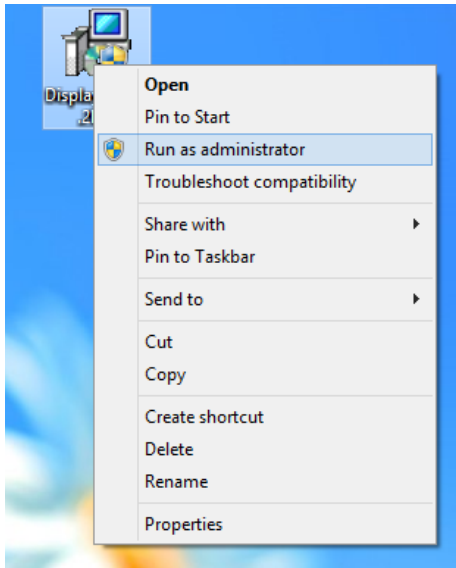
Note: The device is powered through the USB connection.

Installing the USB Driver

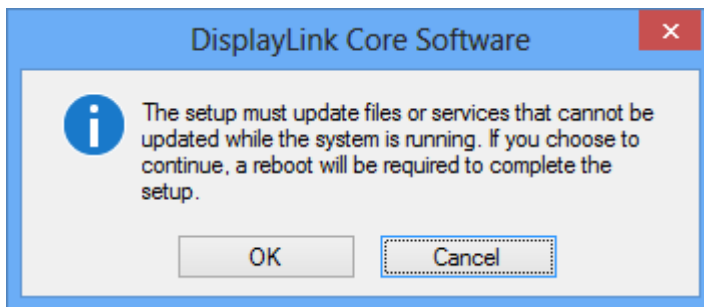
Make sure the device is unplugged for the driver installation.

The USB driver for the Virtual Pole Display can be downloaded from:

- http://download2.pcamerica.com/drivers/Manufacturer/Logic_Controls/LV3000_LV4000_USB_Windows_7_8_1_0.zip

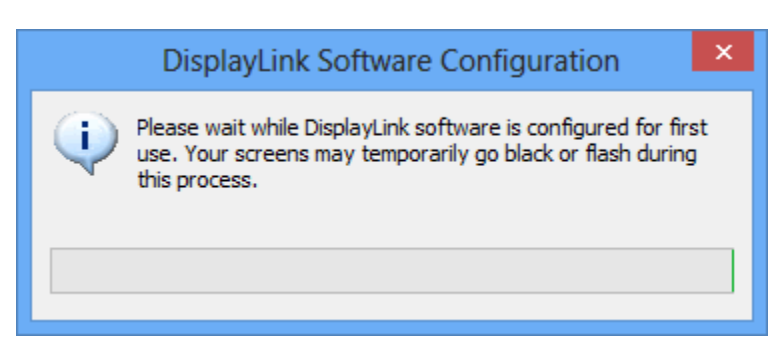
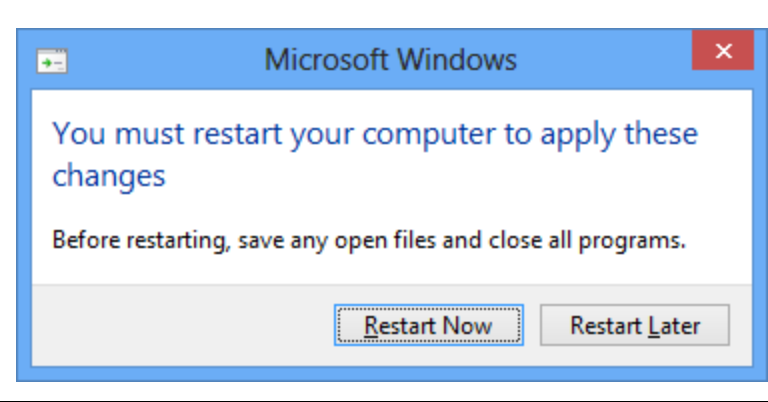


1. After extracting the files downloaded, right click the driver and choose **Run as Administrative**



2. Choose **OK**

3. Plug in the Pole Display to continue the installation.

 <p>The screenshot shows a dialog box titled "DisplayLink Software Configuration" with a close button (X) in the top right corner. On the left is an information icon (i) inside a speech bubble. The main text reads: "Please wait while DisplayLink software is configured for first use. Your screens may temporarily go black or flash during this process." Below the text is a progress bar that is mostly empty, with a small green segment on the right side.</p>	<p>4. The DisplayLink driver will begin to install.</p>
 <p>The screenshot shows a "Microsoft Windows" dialog box with a close button (X) in the top right corner. The main text says: "You must restart your computer to apply these changes". Below that, it says: "Before restarting, save any open files and close all programs." At the bottom, there are two buttons: "Restart Now" (which is highlighted with a dashed border) and "Restart Later".</p>	<p>5. Select Restart Now</p>

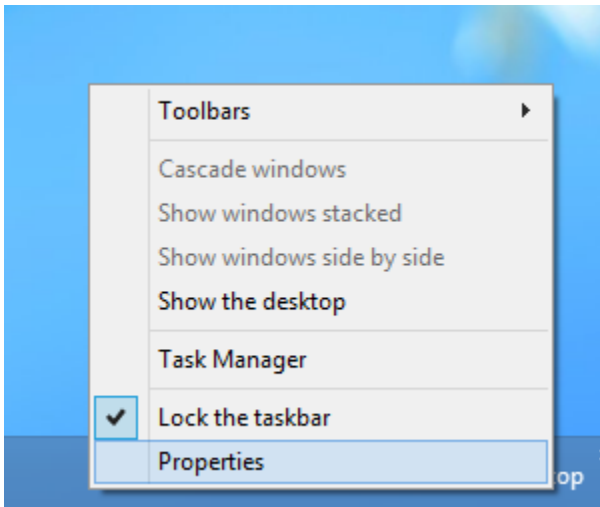
Configuring the Monitor Setup.

After the computer restarts ****unplug the Pole Display****

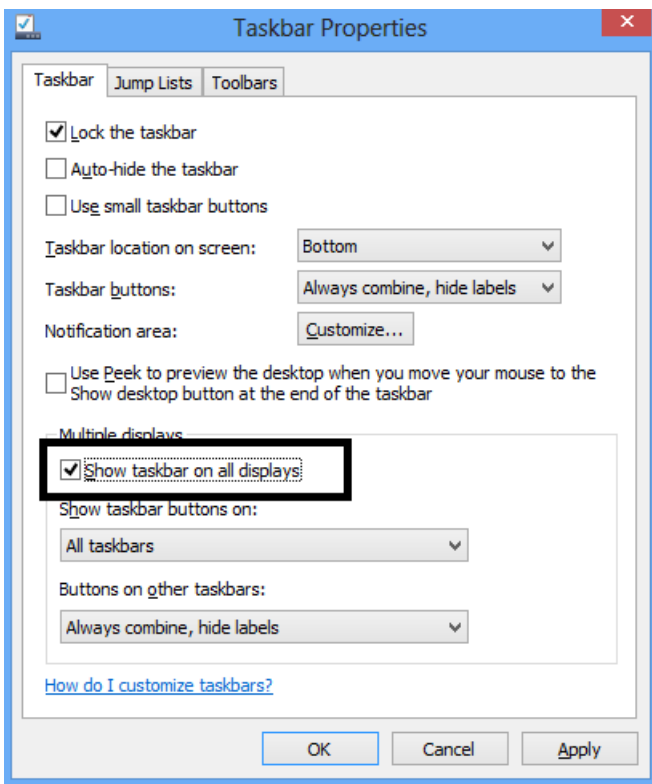
 <p>The screenshot shows the Windows 'Devices' settings page. At the top, there is a 'Devices' header with a white icon on a dark background. Below it, the text reads 'Desktop' and 'Nothing can be sent from the desktop.' At the bottom, there is a blue icon representing a second screen with the text 'Second screen' next to it.</p>	<ol style="list-style-type: none">1. Slide your mouse to the bottom right side of your screen until the toolbar appears. Click Devices2. From Devices, select Second Screen
 <p>The screenshot shows the Windows 'Second screen' settings page. At the top, there is a 'Second screen' header with a white icon on a dark background. Below it, the text reads 'Project to a connected screen'. There are three options: 'PC screen only', 'Duplicate', and 'Extend'. The 'Extend' option is highlighted with a lighter blue background.</p>	<ol style="list-style-type: none">3. Select Extend

****At this time plug your Pole Display back in****

Removing the Taskbar on Second Screen:



1. Right click the **Taskbar** and select **Properties**



2. Uncheck **Show Taskbar on all Displays**
3. Select **OK**

Enabling the Virtual Pole Display in CRE/RPE

Manager

Options

1. Select the **Manager** or **Options** button.
2. Enter the administrator password (default: admin) where applicable.
3. Select **Setup** then, **Setup Screen**.

The screenshot shows the 'Setup Screen' window with the following configuration:

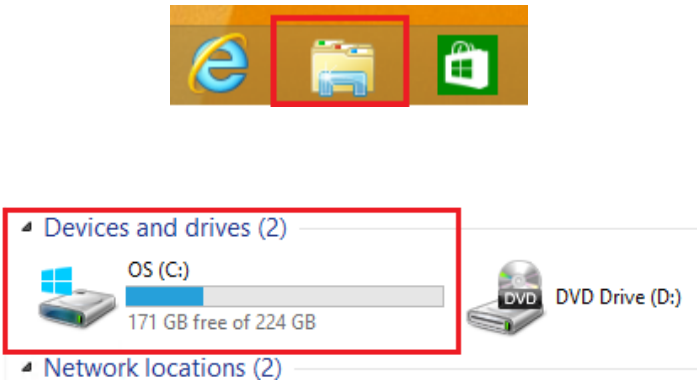
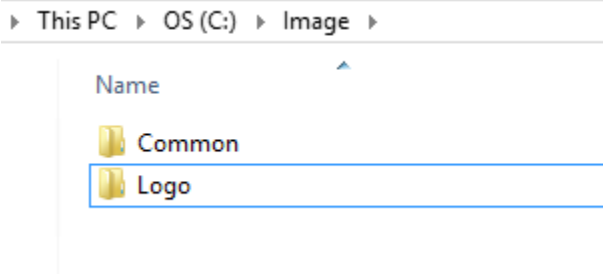
- Hardware Tab:** Selected and highlighted with a red box.
- Page 1 Tab:** Selected and highlighted with a red box.
- Pole Display Port:** None
- Pole Display Type:** Virtual(New) (highlighted with a red box)
- PinPad Port:** COM6
- PinPad Type:** Ingenico6780/ISC35
- PinPad Connection:** USB
- PinPad IP Address:** (empty)
- PinPad IP Port:** 0
- Weight Scale - Primary:** COM1
- Primary Scale Type:** CAS PD-1 or PD-2
- Weight Scale - Secondary:** None
- Secondary Scale Type:** CAS PD-1
- Cash Drawer (Requires Timeclock):** Open Default Drawer
- Default Cash Drawer Port:** NONE
- Check drawer open status (Epson TM-T88 only)
- Use alternate cash drawer status check

Buttons at the bottom: **Scale**, **Update** (highlighted with a red box), **Exit**.

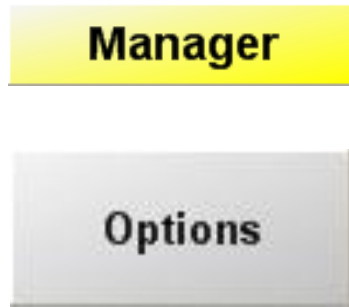
4. Select the **Hardware** tab and then the Page 1 tab.
5. Under **Pole Display Type** select **Virtual(New)**.
6. Select **Update**.

Creating the Common Images Folder

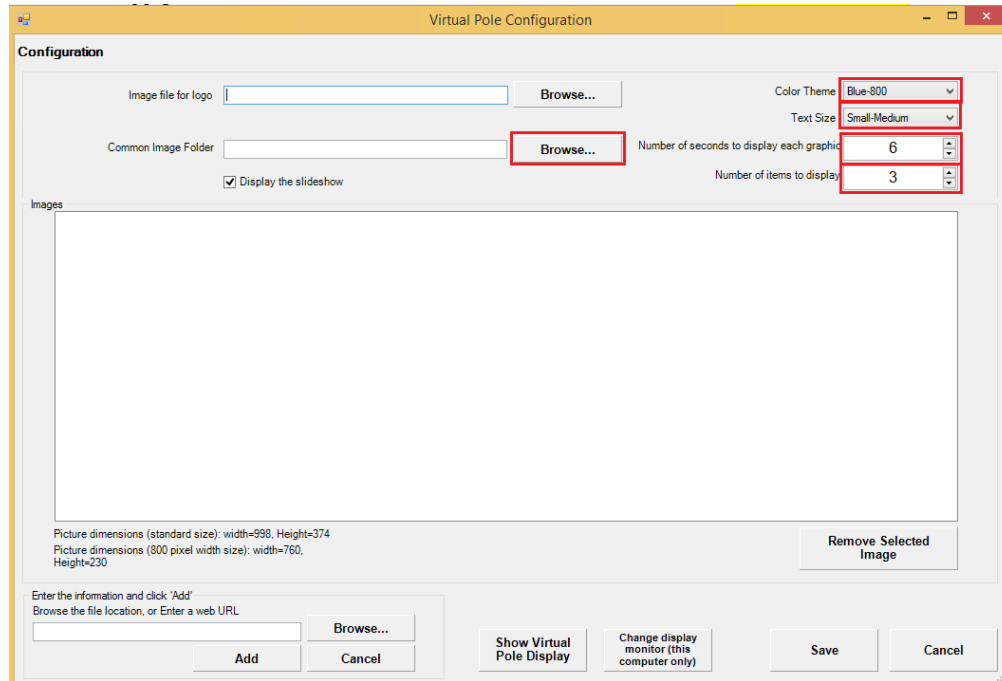
We will need to create a common images folder where all the images that are used will be copied to.

	<ol style="list-style-type: none">1. Click the Folder icon on the taskbar2. Double click the (C:) drive and create a new folder, name this Image
	<ol style="list-style-type: none">3. Open the Image folder and create two (2) more folders, name them Common and Logo <p>Note: this folder will be used as the Common Images Folder with CRE, this should NOT be used as the storage location of your selected images. Your selected images will be copied to the Common Images Folder when they are chosen when configuring the pole display. Leave this folder empty.</p>

Configuring the Pole Display



1. Select the **Manager** or **Options** button.
2. Enter the administrator password (default: admin) where applicable.
3. Select **Setup** then, **Virtual Pole Configuration**.

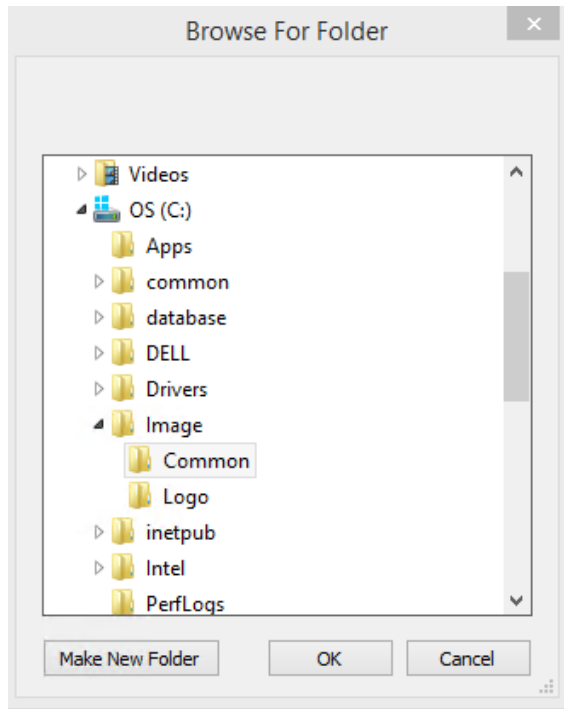


4. Select the **Color Theme***.

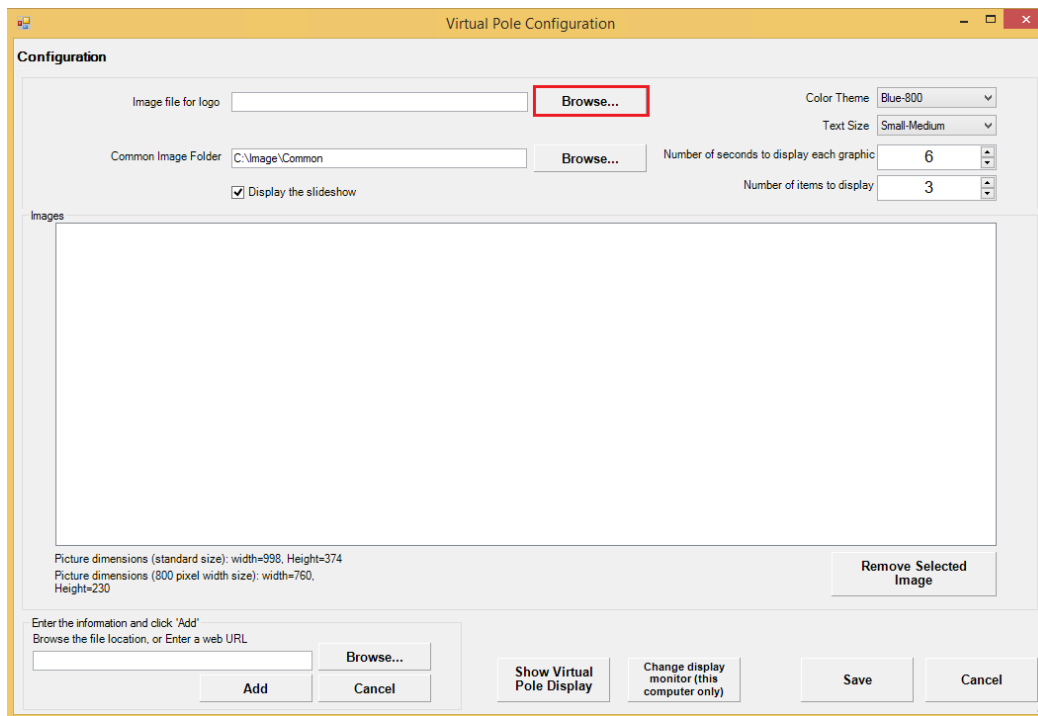
Note: If the screen resolution can only be set to 800x400 then you must use the one of the specific color themes (Black-800, Blue-800, Red-800). If these options are not available please upgrade to the latest version of CRE/RPE.

5. Select the **Text Size***.
6. Set the **Number of seconds to display each graphic**.
7. Set the **Number of items to display**.
8. For the **Common Image Folder** select the folder we created earlier by selecting **Browse....**

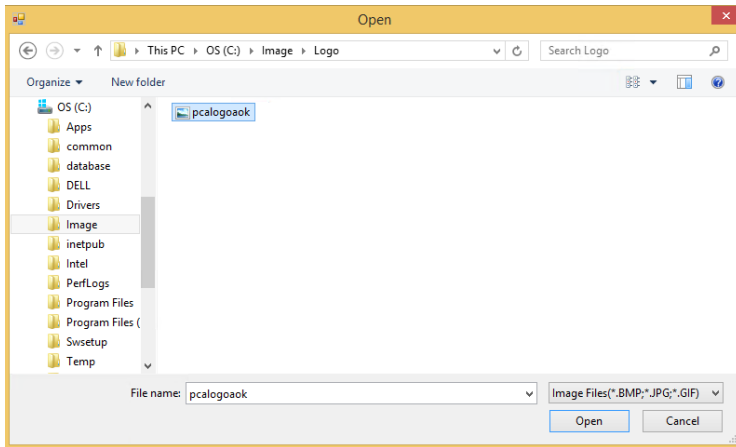
(*see below for sample logic controls screens)



9. Select the folder that you would like all of the images copied to.
10. When done select **OK**.



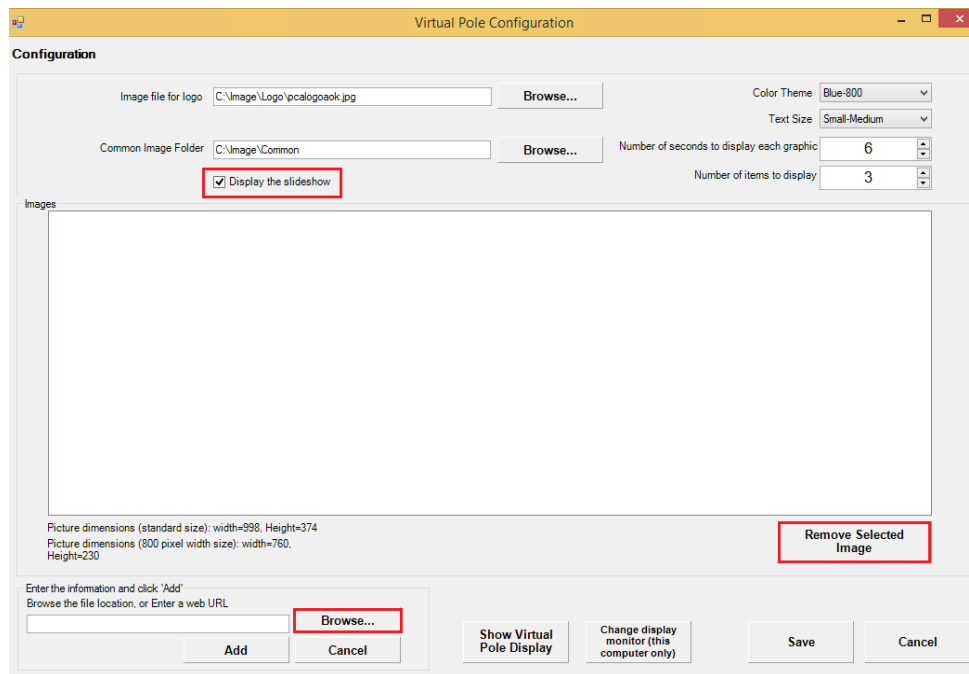
11. For **Image file for logo** select **Browse...**



12. Select the file you would like to use as a logo and select **Open**.

- The Image dimensions that can be used on the standard size templates (Blue, Black and Red) are width=998 X Height=around 80 (in pixels).
- The Image dimensions that can be used on the 800 size templates (Blue-800, Black-800 and Red-800) are width=760 X Height=around 50 (in pixels).

Note: As the Logo size increases, the amount of space for the images that are displayed will decrease. The image will be pushed down and might be cut it off at the monitor's edge.



13. Select **Browse...** at the bottom right and select the images you would like to display at the bottom of the display.
14. Optionally you can choose to **Display the slideshow**.
15. If there is an image you don't want on the slideshow highlight it and then select **Remove Selected Image**.
16. When done select Show Virtual Pole Display.
17. If you have multiple monitors select **Change display monitor (this computer only)**, this will cycle through each monitor until the correct one is displaying the display. When done select **Save**.

- The Image dimensions that can be used on the standard size templates (Blue, Black and Red) are width=998 X Height=374 (in pixels).
- The Image dimensions that can be used on the 800 size templates (Blue-800, Black-800 and Red-800) are width=760 X Height=230 (in pixels).

Note: As the number of items to be displayed and Logo size increases, the amount of space for the images that are displayed will decrease. The image will be pushed down and might be cut it off at the monitor's edge.

Sample Pole Display Screens



- Blue Theme
- Large Text
- 2 Items Being Displayed
- Logo
- Advertisement Image

A sample pole display screen with a blue theme. It features a table with columns for 'quantity', 'description', and 'price'. The table contains 8 items:

quantity	description	price
1	1 pc/\$12.000 Pepperoni Pizza	\$12.00
1	1 pc/\$0.000 Regular Size	\$0.00
1	1 pc/\$0.000 Regular Crust	\$0.00
1	1 pc/\$1.250 Soda	\$1.25
1	1 pc/\$1.250 Soda	\$1.25
1	1 pc/\$1.250 Soda	\$1.25
1	1 pc/\$1.250 Soda	\$1.25
1	1 pc/\$1.250 Soda	\$1.25

At the bottom left, there is a 'Subtotal:' section showing '\$18.25' and a 'Tax:' section showing '\$1.83'. At the bottom right, there is a 'Total:' section showing '\$20.08'.

- Blue Theme
- 8 Items Being Displayed
- Large Text
- Logo

A sample pole display screen with a red theme. It features a table with columns for 'quantity', 'description', and 'price'. The table contains 2 items:

quantity	description	price
1	1 pc/\$1.250 Soda	\$1.25
1	1 pc/\$0.500 Chips	\$0.50

At the bottom left, there is a 'Subtotal:' section showing '\$1.75' and a 'Tax:' section showing '\$0.18'. At the bottom right, there is a 'Total:' section showing '\$1.93'. Below the table, there is a large advertisement image showing a dirt path through a misty forest.

- Red Theme
- 2 Items Being Displayed
- Small Text
- Advertisement

A sample pole display screen with a black theme. It features a table with columns for 'quantity', 'description', and 'price'. The table contains 2 items:

quantity	description	price
1	1 pc/\$1.250 Soda	\$1.25
1	1 pc/\$0.500 Chips	\$0.50

At the bottom left, there is a 'Subtotal:' section showing '\$1.75' and a 'Tax:' section showing '\$0.18'. At the bottom right, there is a 'Total:' section showing '\$1.93'.

- Black Theme
- Logo
- 8 Items Being Displayed
- Large Text