

*One Blue Hill Plaza, 16th Floor, PO Box 1546
Pearl River, NY 10965
1-800-PC-AMERICA, 1-800-722-6374
(Voice) 845-920-0800 (Fax) 845-920-0880*

Logic Controls SB9090 Installation Guide (XP)



This document provides step-by-step instructions for setting up your Logic Controls SB9090 system, which contains the following components:

- The SB9090 Terminal (Including the Touchscreen)

Hardware Ports



DC 12V – Power cable will be plugged in here

CASH DRAWER – Open, Cash Drawer will interface into the back of the printer

LAN – Network cable will plug in here

USB X4 – Open, can be used for any USB device (barcode scanner, keyboard, mouse, or printer)

COM1 - Open, Standard RS232 Serial Port

COM2 - Open, Standard RS232 Serial Port

COM3 - Used for unit attached pole display (if applicable)

KEYBOARD – Open, PS2 Keyboard can plug in here

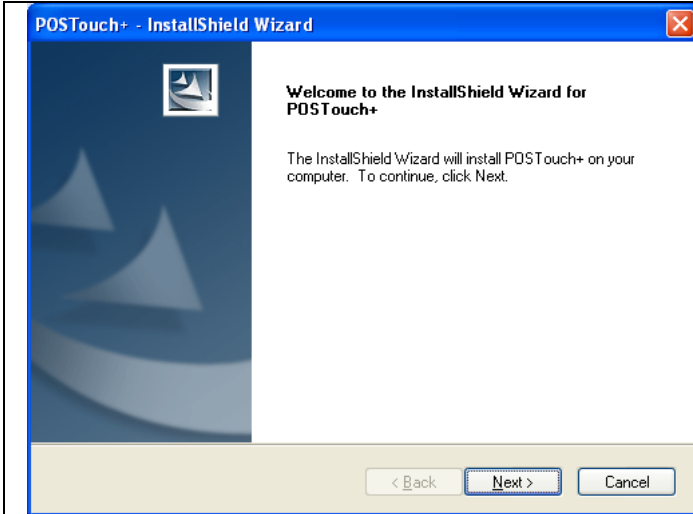
VGA – Will be used for secondary display (if applicable)

CF - CompactFlash card can be inserted here

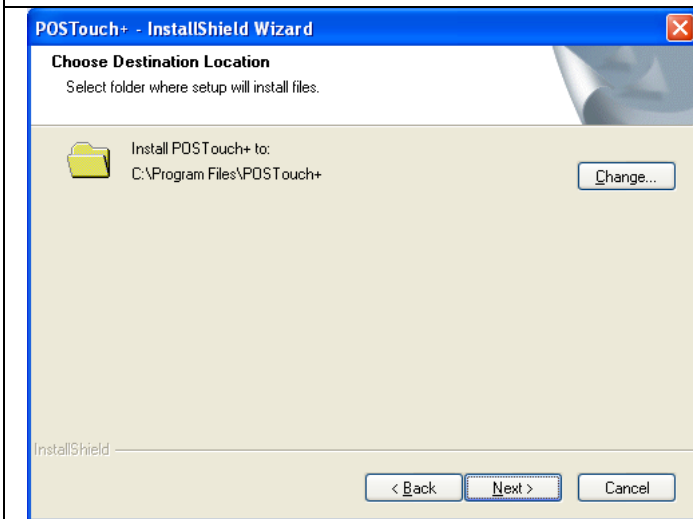
Touchscreen Driver Installation

The driver for the touchscreen monitor can be downloaded from:

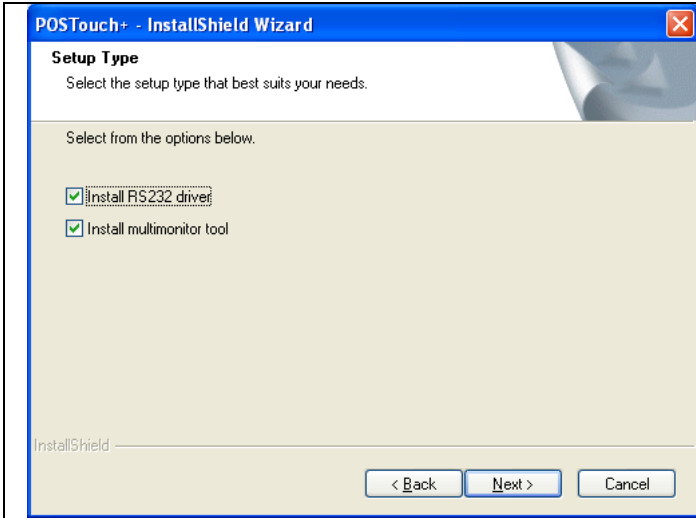
- http://download2.pcamerica.com/drivers/Manufacturer/Logic_Controls/LC_SB9090_TS.zip



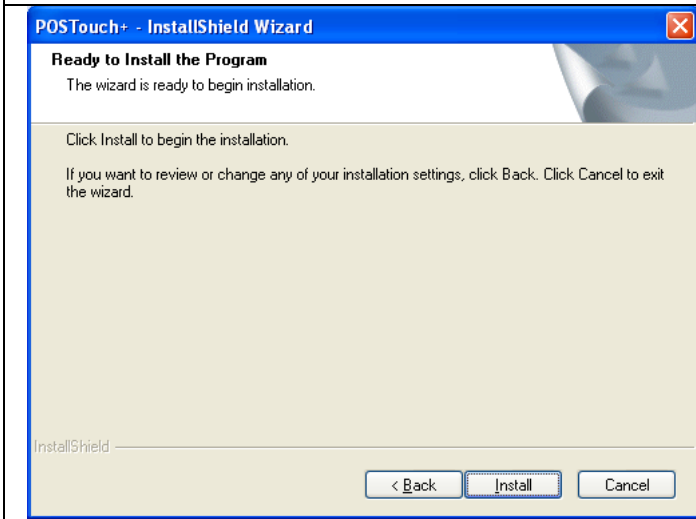
1. Select **Next**.



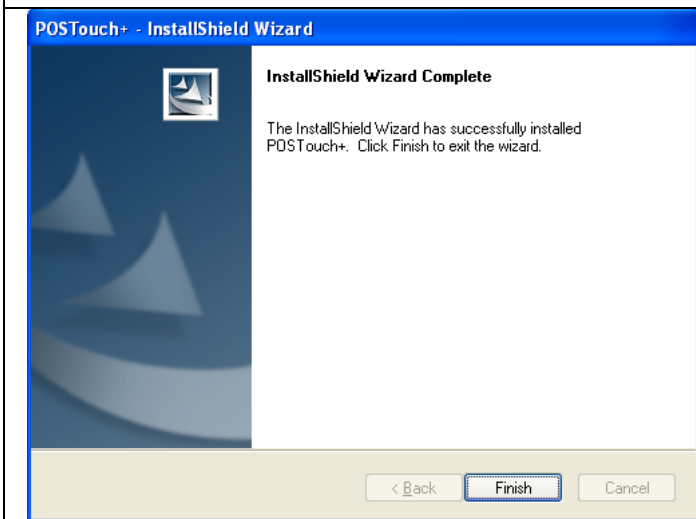
2. Select **Next**.



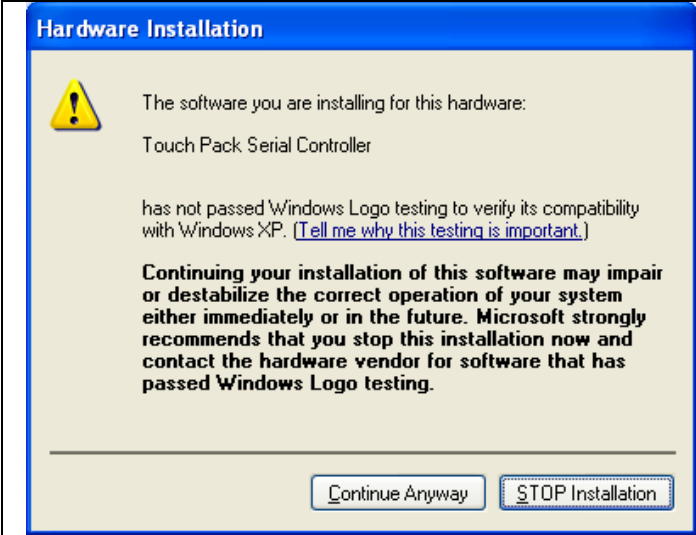
3. Select **Install RS232 interface driver**.
4. If applicable select **Install multimonitor tool**.
5. Select **Next**.



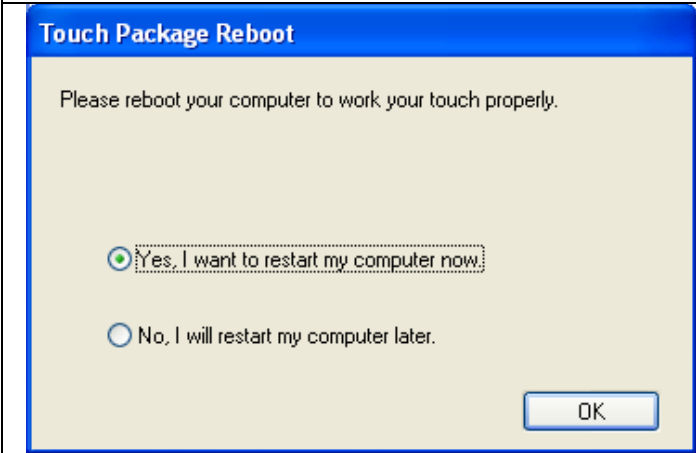
6. Select **Install**.



7. Select **Finish**.



8. Select **Continue Anyway**.



9. Select **Yes, I want to restart my computer now**.

10. Select **OK**.