

ID-Tech MSR



In order to work with pcAmerica's software, all MSR's (magnetic swipe readers) need to read from either track 2, or track 1 and track 2. When swiped into notepad a credit card should look like this (including the carriage return);

;1234567891234567=12345678912345678912?****

or

%B1234567891234567^TEST CARD^12345678912345678912?

;1234567891234567=12345678912345678912?****

If when swiped in notepad the result is different then what is shown above the MSR may require additional configuration to work in CRE/RPE.

ID-Tech MSR Configuration

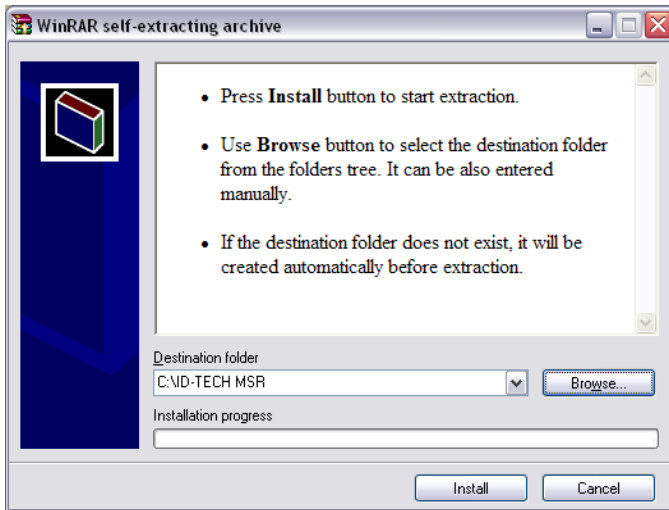


1. Install the configuration software (setup.exe)

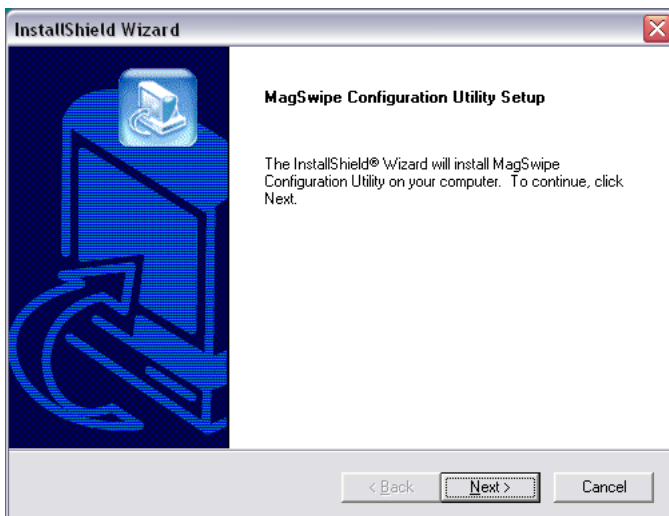
The ID-Tech Configuration Utility can be downloaded from:

- http://download2.pcamerica.com/drivers/ID-Tech_Configuration_Software.zip

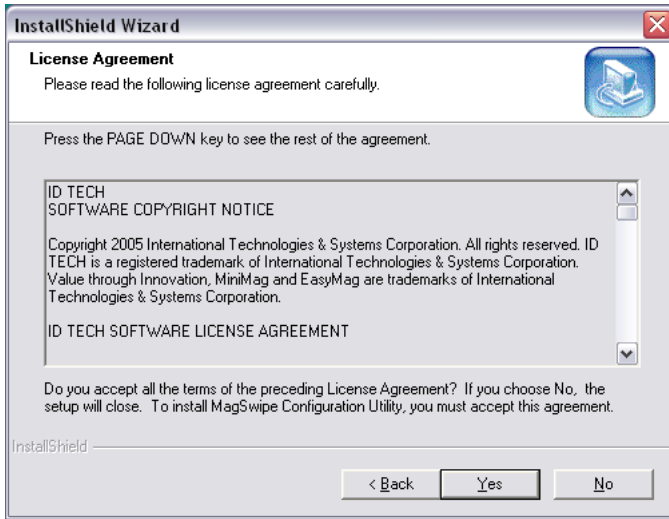
NOTE: The configuration software must be extracted before use.



2. Run the file and specify a location for **Destination folder**.
3. Select **Install**.
4. After the installer finishes navigate to the location you specified in step 1.

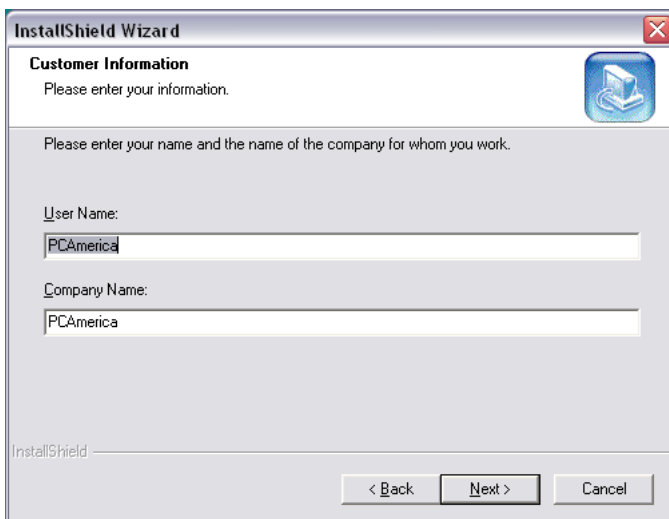


5. Select **Next**.



6. Select **Yes**.

7. Select **Yes**.

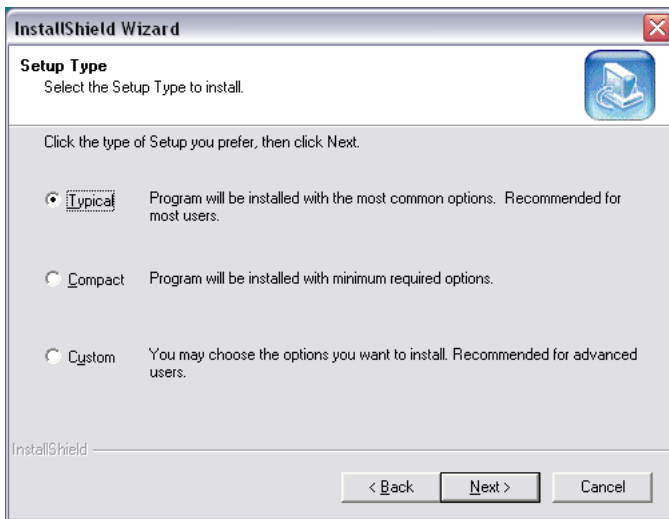


8. Enter your **User Name** and **Company Name**.

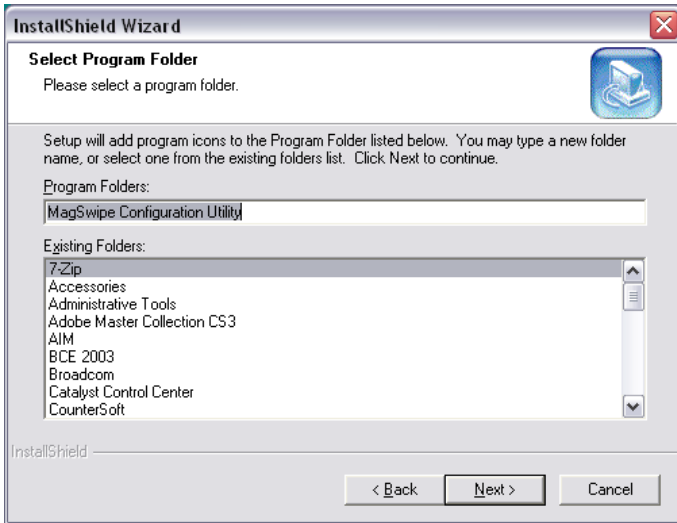
9. Select **Next**.



10. Select **Next**.

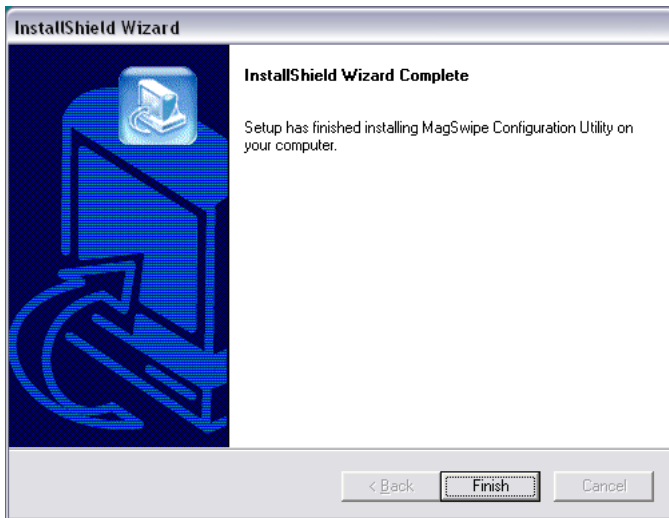


11. Select **Next**.



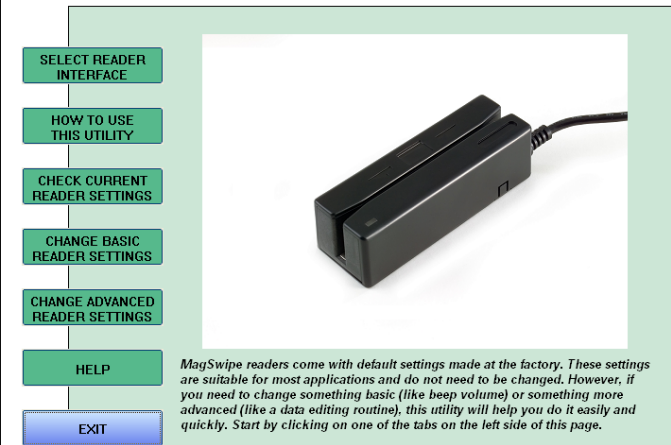
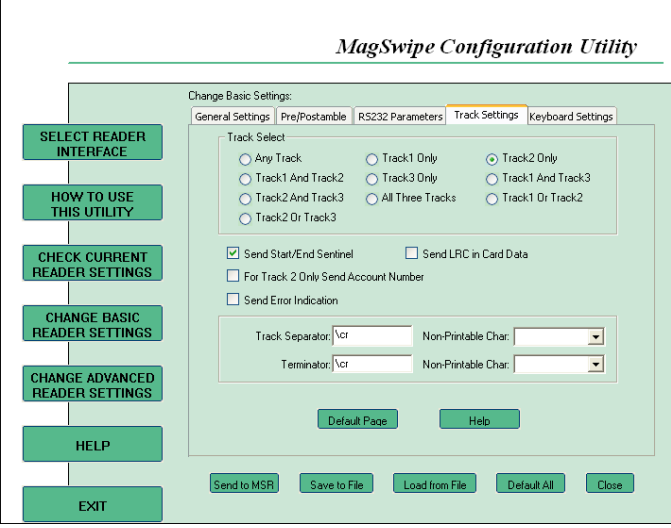
12. Select **Next**.

13. Select **Next**.





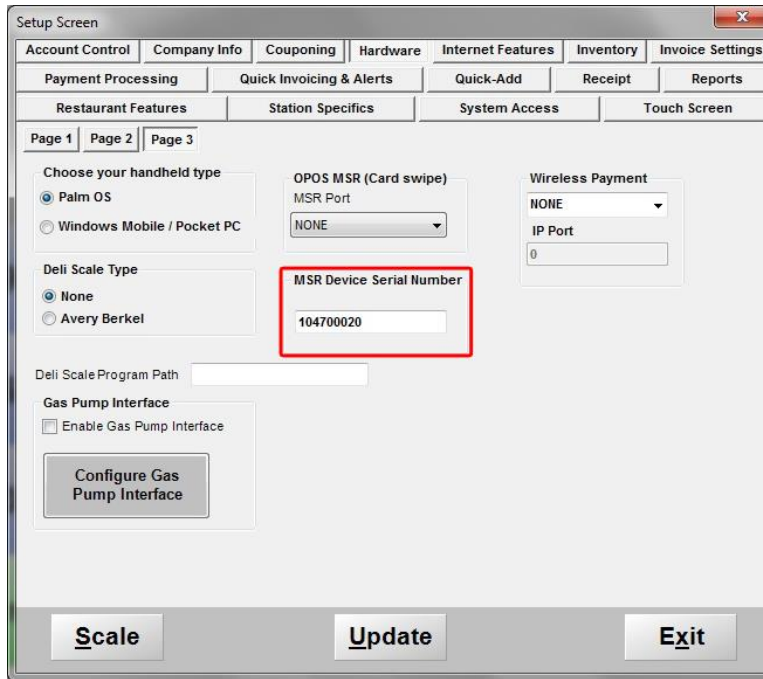
14. Select **Finish**.

MagSwipe Configuration Utility:

	<p>15. Open the MagSwipe Configuration Utility, by going to Start and All Programs then MagSwipe.</p>
	<p>16. Select Change Basic Reader Settings and select the Track Settings tab.</p> <p>17. Under Track Select, select one of the following options:</p> <ul style="list-style-type: none"> • Track2 Only – This will only read the account information off of the card. • Track1 And Track2 – This will read the account information as well as the customer’s name (used for Bar Tabs). <p>18. Select Send to MSR.</p> <p>You should receive notification that the changes were sent correctly.</p>

Configuration in CRE/RPE

 	<ol style="list-style-type: none">1. Select the Manager or Options button.2. Enter the administrator password (default: admin) where applicable.3. Select Setup then, Setup Screen.
--	---



4. Select the **Hardware** tab then, select **Page3**.
 5. Under **Encryption Method (Card Swipe)** select **IDTECH**.
- Note: If the option Encryption Method (Card Swipe) is not available (pictured above) then the encryption method has been automatically selected for you.**
6. Under **MSR Device Serial Number** enter the serial number of the device.
 - The **Serial Number** of the device should either be on; the invoice of the MSR, or a sticker on the device (may be labeled as **S/N**).
 7. Select **Update**.