

One Blue Hill Plaza, 16th Floor, PO Box 1546

Pearl River, NY 10965

1-800-PC-AMERICA, 1-800-722-6374

(Voice) 845-920-0800 (Fax) 845-920-0880

HP Pole Display OPOS Installation

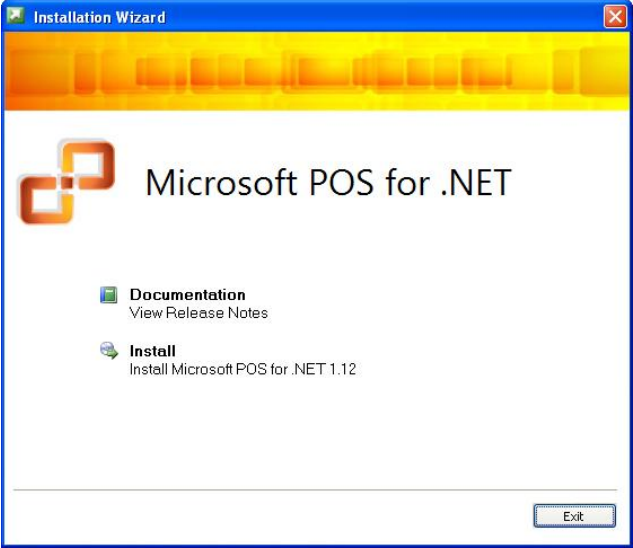
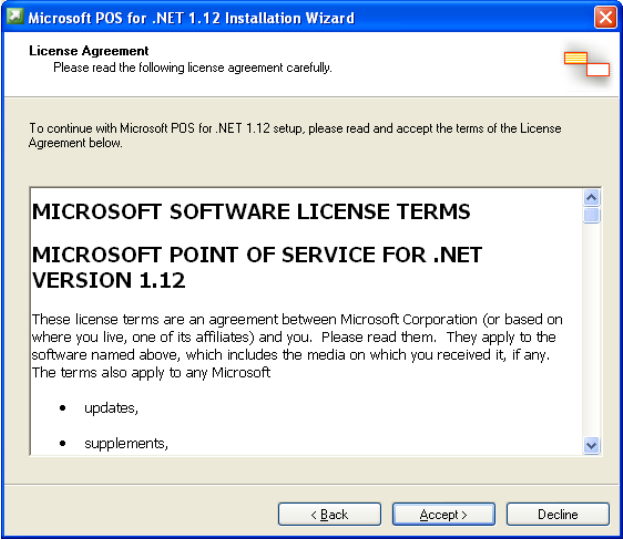


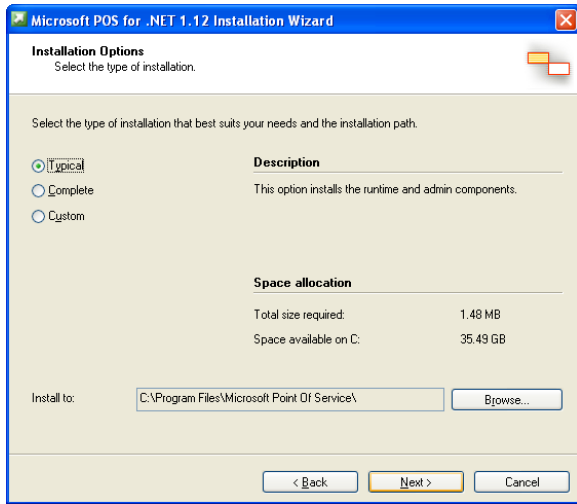
Note: The Hp pole display requires you to be on V12.

Installing Microsoft POS for .NET

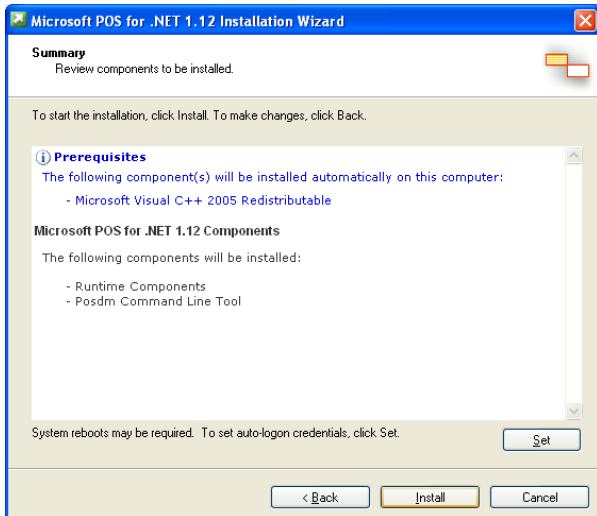
The installer for Microsoft POS for .NET can be downloaded at:

- http://download2.pcamerica.com/drivers/POS_for_.Net.exe

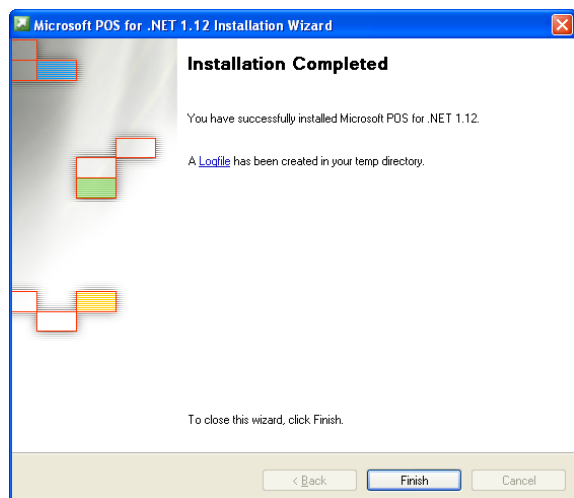
	<ol style="list-style-type: none">1. Run the installer and select Install.2. Enter a User Name and Organization and select Next.
	<ol style="list-style-type: none">3. Select Accept.



4. Select **Typical** and then **Next**.



5. Select **Install**.

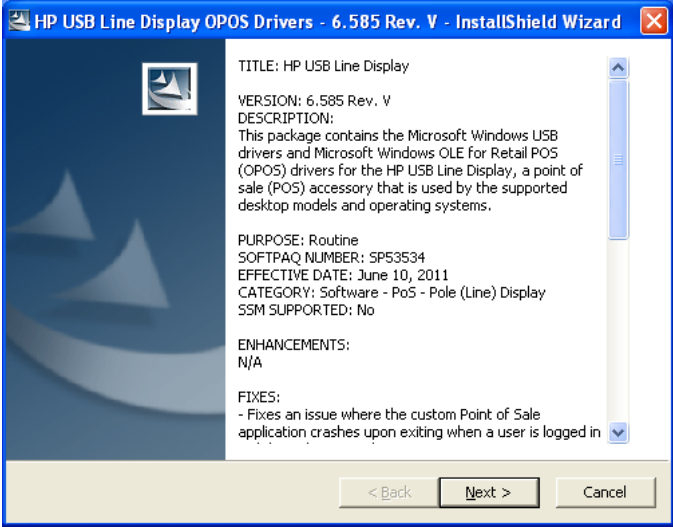
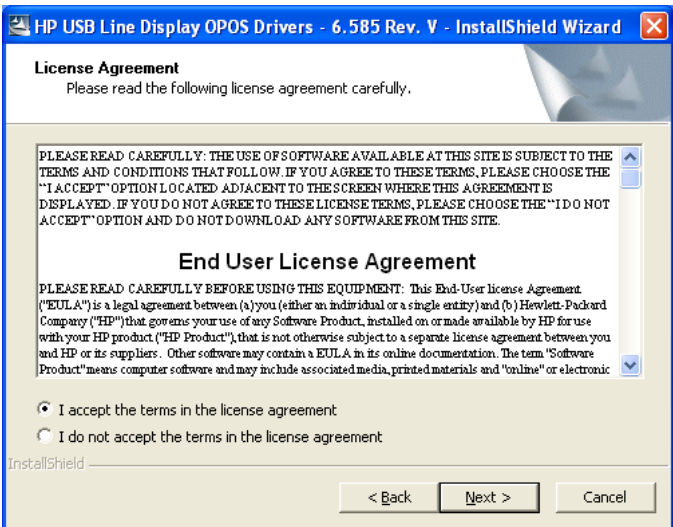


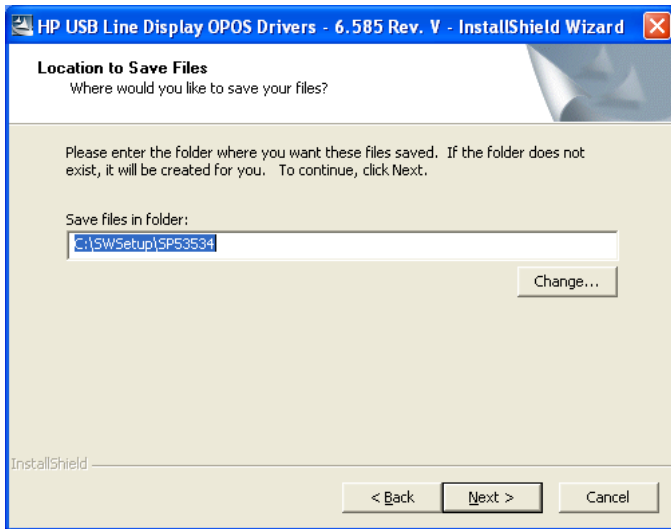
6. Select **Finish**.

Installing HP OPOS Driver

The OPOS driver for the HP can be downloaded from:

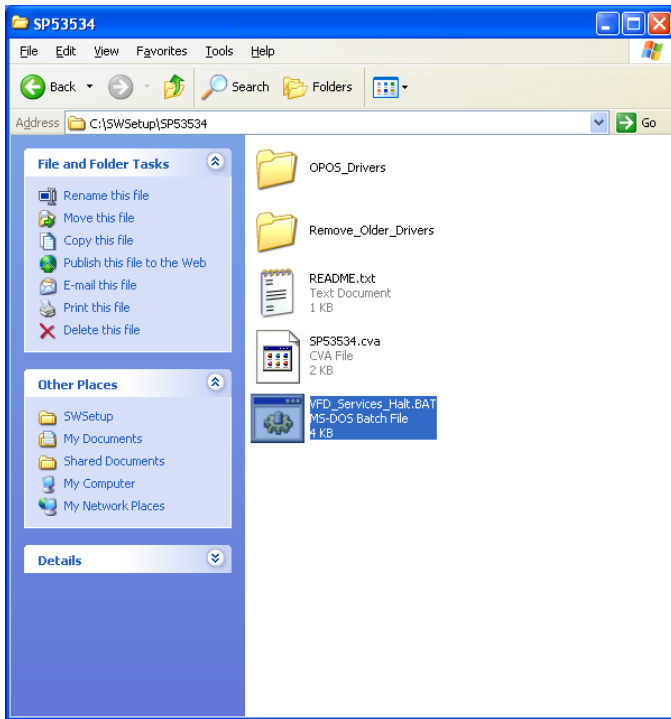
- http://download2.pcamerica.com/drivers/Manufacturer/HP/HP_Pole_Display_OPOS.zip

 <p>HP USB Line Display OPOS Drivers - 6.585 Rev. V - InstallShield Wizard</p> <p>TITLE: HP USB Line Display</p> <p>VERSION: 6.585 Rev. V</p> <p>DESCRIPTION: This package contains the Microsoft Windows USB drivers and Microsoft Windows OLE for Retail POS (OPOS) drivers for the HP USB Line Display, a point of sale (POS) accessory that is used by the supported desktop models and operating systems.</p> <p>PURPOSE: Routine</p> <p>SOFTPAQ NUMBER: SP53534</p> <p>EFFECTIVE DATE: June 10, 2011</p> <p>CATEGORY: Software - PoS - Pole (Line) Display</p> <p>SSM SUPPORTED: No</p> <p>ENHANCEMENTS: N/A</p> <p>FIXES: - Fixes an issue where the custom Point of Sale application, crashes upon exiting when a user is logged in</p> <p>< Back Next > Cancel</p>	<ol style="list-style-type: none">1. After downloading the driver extract and run the installer.2. Select Next.
 <p>HP USB Line Display OPOS Drivers - 6.585 Rev. V - InstallShield Wizard</p> <p>License Agreement Please read the following license agreement carefully.</p> <p>PLEASE READ CAREFULLY. THE USE OF SOFTWARE AVAILABLE AT THIS SITE IS SUBJECT TO THE TERMS AND CONDITIONS THAT FOLLOW. IF YOU AGREE TO THESE TERMS, PLEASE CHOOSE THE "I ACCEPT" OPTION LOCATED ADJACENT TO THE SCREEN WHERE THIS AGREEMENT IS DISPLAYED. IF YOU DO NOT AGREE TO THESE LICENSE TERMS, PLEASE CHOOSE THE "I DO NOT ACCEPT" OPTION AND DO NOT DOWNLOAD ANY SOFTWARE FROM THIS SITE.</p> <p>End User License Agreement</p> <p>PLEASE READ CAREFULLY BEFORE USING THIS EQUIPMENT. This End-User license Agreement ("EULA") is a legal agreement between (a) you (either an individual or a single entity) and (b) Hewlett-Packard Company ("HP") that governs your use of any Software Product, installed on or made available by HP for use with your HP product ("HP Product"), that is not otherwise subject to a separate license agreement between you and HP or its suppliers. Other software may contain a EULA in its online documentation. The term "Software Product" means computer software and may include associated media, printed materials and "online" or electronic</p> <p><input checked="" type="radio"/> I accept the terms in the license agreement</p> <p><input type="radio"/> I do not accept the terms in the license agreement</p> <p>InstallShield</p> <p>< Back Next > Cancel</p>	<ol style="list-style-type: none">3. Select I accept the terms in the license agreement.4. Select Next.



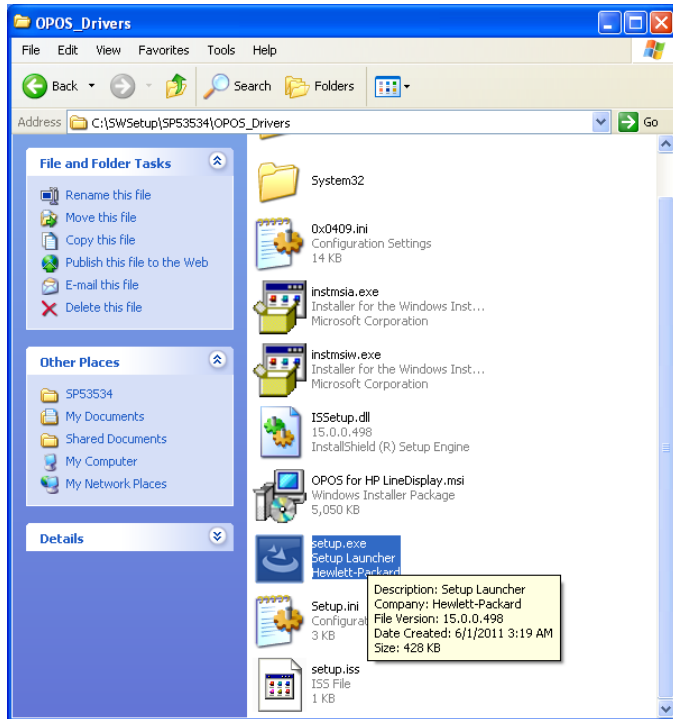
5. Select the location to save the install files and select **Next**.

A README.txt file will open which will give you instructions on what to do next, Please follow the steps in this doc to install the pole display correctly with CRE.

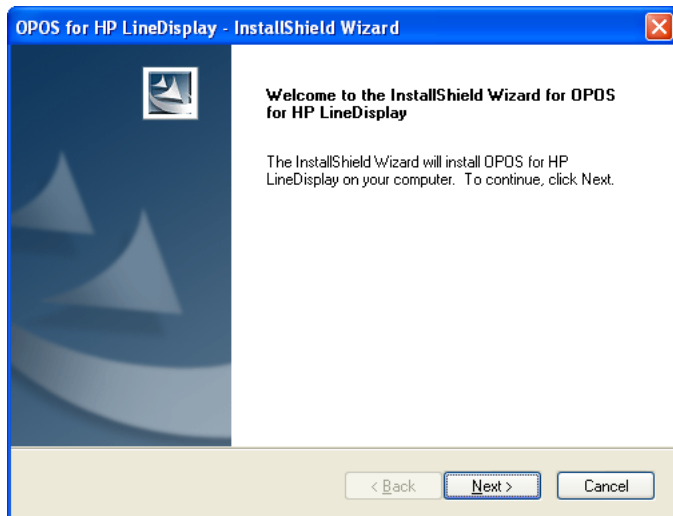


At this point you will need to be logged in as an Administrator.

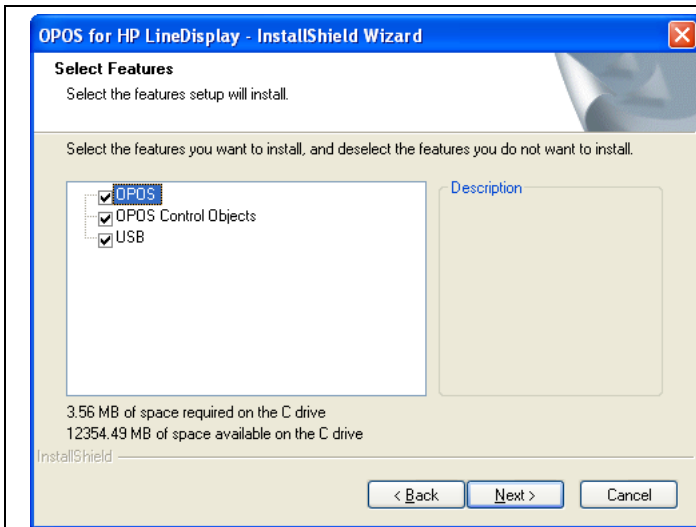
6. Navigate to the following folder:
 - C:\SWSetup\SP53534
7. Run the **VFD_Services_Halt.BAT** file.
8. Reboot the computer.



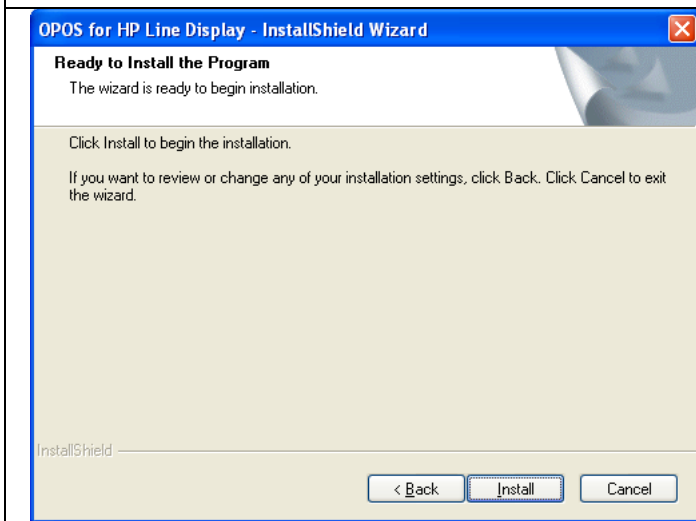
9. Navigate to the following folder:
 - C:\SWSetup\SP53534\OPOS_Drivers
10. Run the **setup.exe** file.



11. Select **Next**.



12. Make sure all the options to be installed are checked and select **Next**.



13. Select **Install** to install the Driver.



14. Select **Yes, I want to restart my computer now**.

The computer **MUST** be restarted.

15. Select **Finish**.

Configuration in CRE/RPE

The screenshot displays the 'Setup Screen' window with the 'Hardware' tab selected. The window has a blue title bar and a menu bar with tabs: Account Control, Company Info, Couponing, Hardware (highlighted with a red box), Internet Features, Inventory, and Invoice Settings. Below the menu bar are several sub-tabs: Payment Processing, Quick Invoicing & Alerts, Quick-Add, Receipt, Reports, Restaurant Features, Station Specifics, System Access, and Touch Screen. The main content area is divided into three pages (Page 1, Page 2, Page 3). The 'Pole Display Port' section has radio buttons for None, COM1, COM2, COM3, COM4, COM5, USB, and Other. The 'Pole Display Type' section has radio buttons for General, Casio \ Touch Dynamic, Virtual, Posiflex, Toshiba, and OPOS (highlighted with a red box). The 'OPOS Pole Display' section has a dropdown menu for PoleDisplay Type, with 'HP POS Pole Display' selected (highlighted with a red box). The 'PinPad Port' section has radio buttons for None, COM1, COM2, COM3, COM4, COM5, COM6, and Other. The 'PinPad Type' dropdown is set to 'None'. The 'PinPad Connection' dropdown is set to 'Serial'. The 'PinPad IP Address' and 'PinPad IP Port' fields are empty. The 'Weight Scale - Primary' and 'Weight Scale - Secondary' sections have radio buttons for None, COM1, COM2, COM3, COM4, COM5, COM6, and Other. The 'Primary Scale Type' and 'Secondary Scale Type' dropdowns are both set to 'CAS PD-1'. The 'Cash Drawer' section has radio buttons for 'Open Default Drawer' (selected) and 'Open Employee Drawer'. The 'Default Cash Drawer Port' dropdown is set to 'NONE'. There is a checkbox for 'Check drawer open status (Epson only)'. At the bottom of the window are three buttons: 'Scale', 'Update', and 'Exit'.

1. Select the **Options/Manager** and enter your password (where applicable).
2. Select **Setup** and then **Setup Screen** and re-enter your password if necessary.
3. Select the **Hardware** tab.
4. Select **OPOS** for the **Pole Display Type**.
5. Select **HP POS Pole Display** under **OPOS Pole Display**.
6. Select **Update** to save your changes.