

One Blue Hill Plaza, 16th Floor, PO Box 1546

Pearl River, NY 10965

1-800-PC-AMERICA, 1-800-722-6374

(Voice) 845-920-0800 (Fax) 845-920-0880

HP A799 OPOS Installation



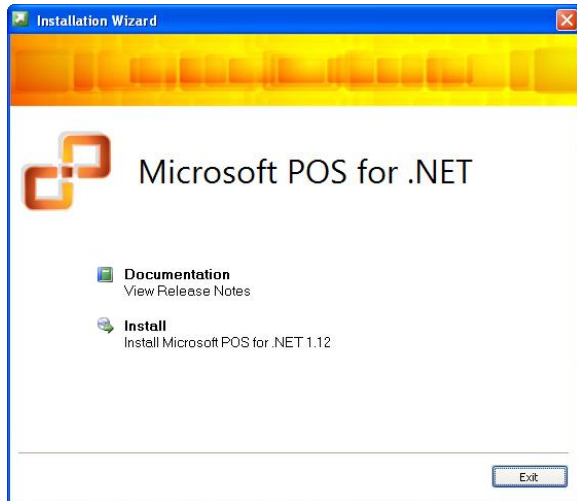
NOTE: To install OPOS drivers CRE/RPE Must be running version 12.00 or later.

This can be checked at the login screen by going to **File** then **About**.

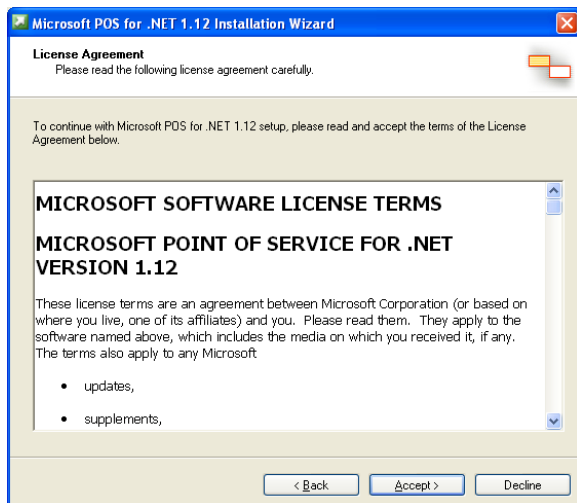
Installing Microsoft POS for .NET

The installer for Microsoft POS for .NET can be downloaded at:

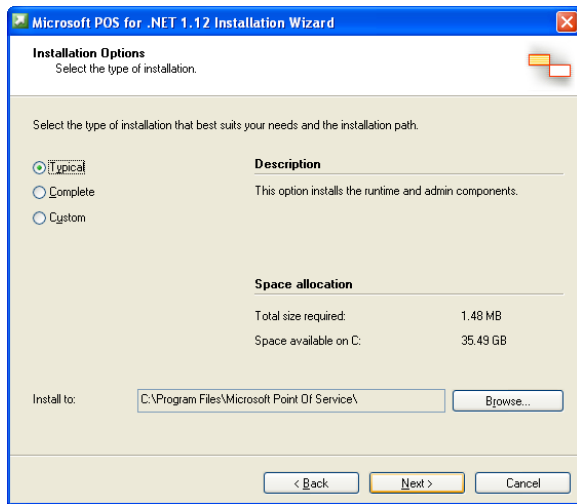
- http://download2.pcamerica.com/drivers/POS_for_.Net.exe



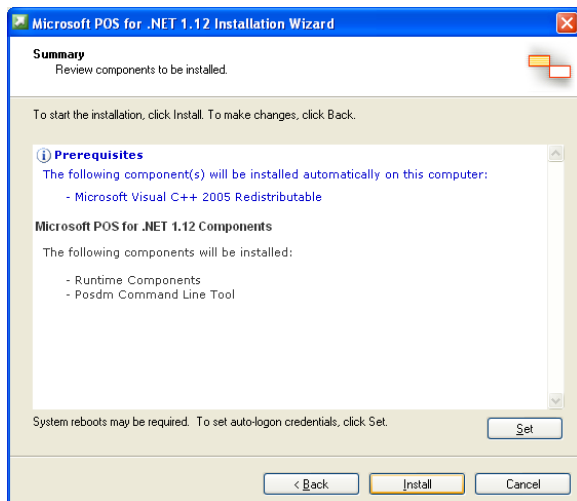
1. Run the installer and select **Install**.
2. Enter a **User Name** and **Organization** and select **Next**.



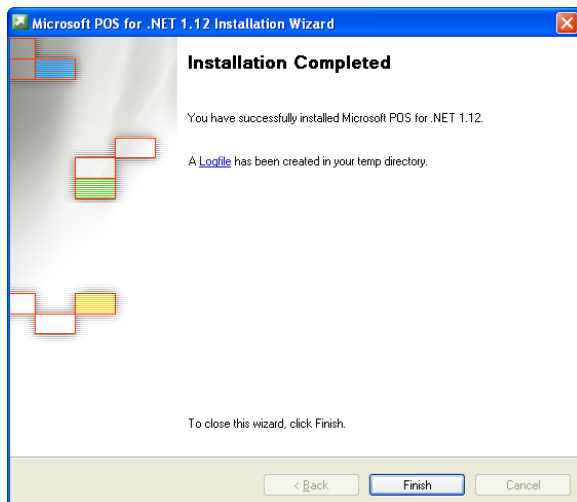
3. Select **Accept**.



4. Select **Typical** and then **Next**.



5. Select **Install**.

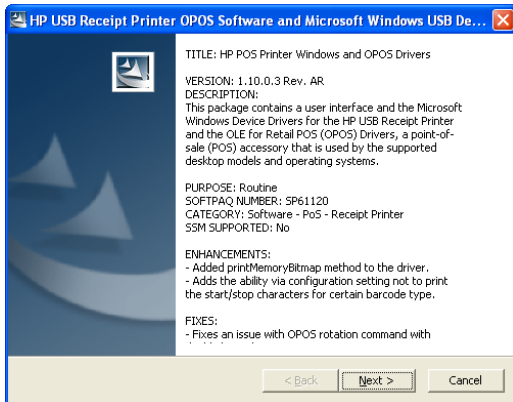


6. Select **Finish**.

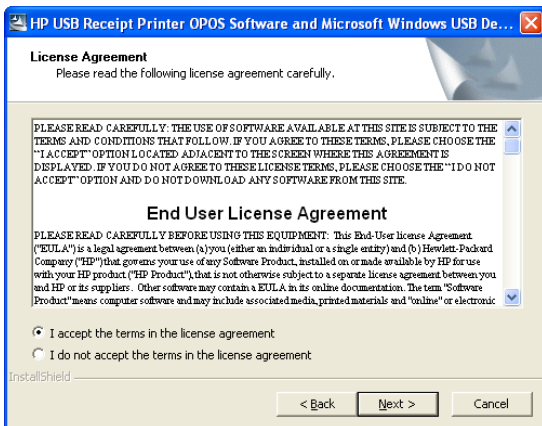
HP A799 OPOS driver Installation

Printer install files can be downloaded at:

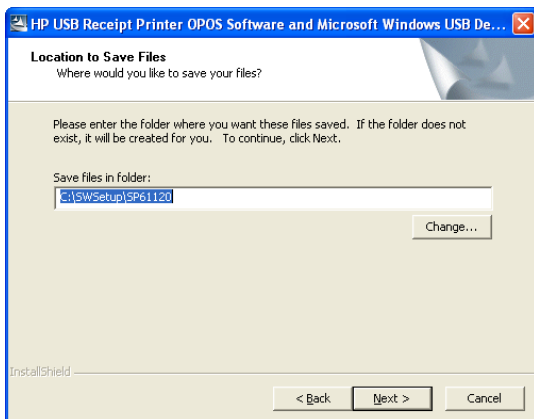
- http://download2.pcamerica.com/drivers/Manufacturer/HP/HP_Printer_OPOS.zip



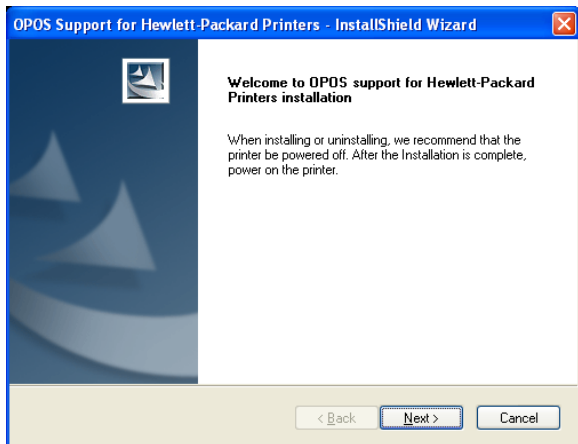
1. Extract the file HP_Printer_OPOS.zip. (Those are the driver files.) Run the installer.
2. Select **Next**.



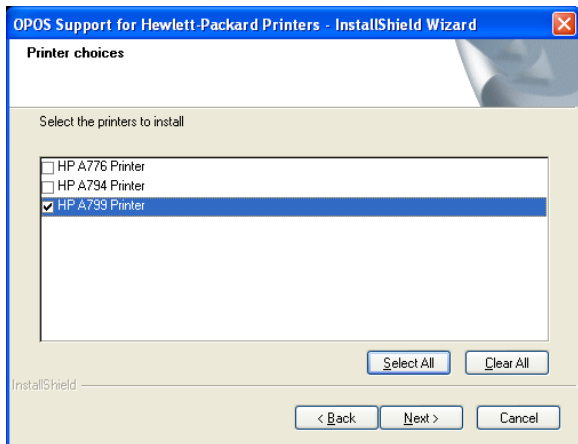
3. Select **I accept the terms in the license agreement** and select **Next**.



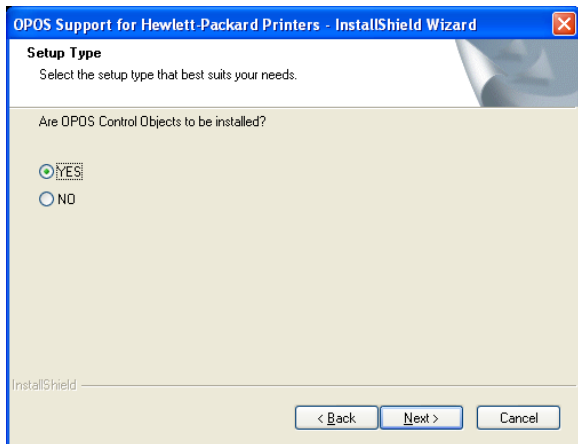
4. Select the location to extract the files to and select **Next** (e.g. C:\SWSetup\SP61120).
5. Select **Next**.



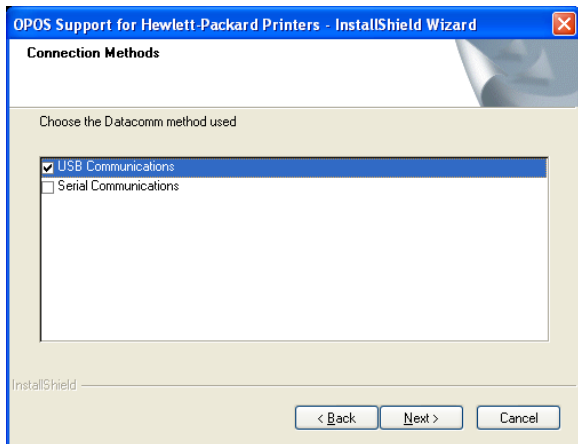
6. Select **Next**.



7. Select the printer(s) that you have (e.g. HP A799 Printer) and select **Next**.

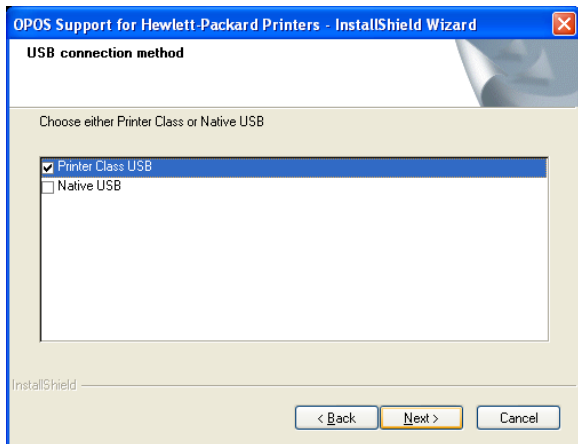


8. Select **YES** to have the OPOS Control Objects installed.

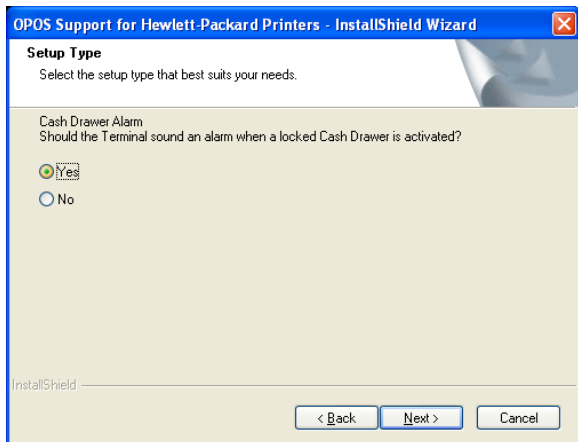


9. Select **USB Communications**.

10. Select **Next**.

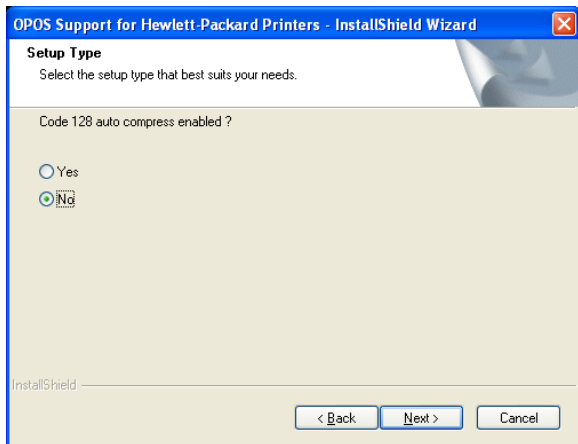


11. Select **Printer Class USB** and select **Next**.

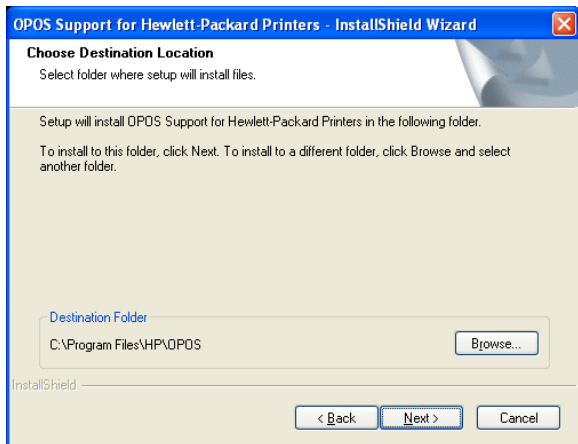


12. Select **Yes** for the cash drawer Alarm.

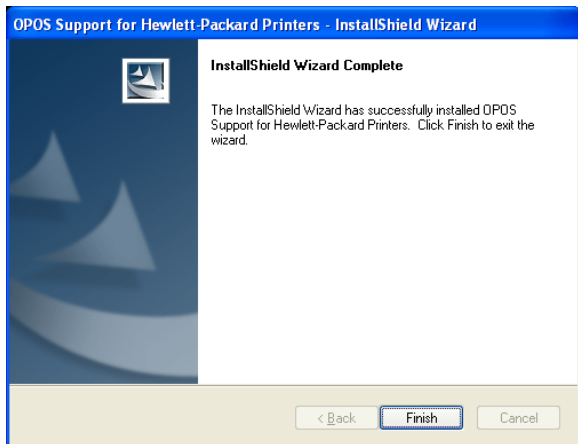
13. Select **Next**.



14. Select **No**.
15. Select **Next**.

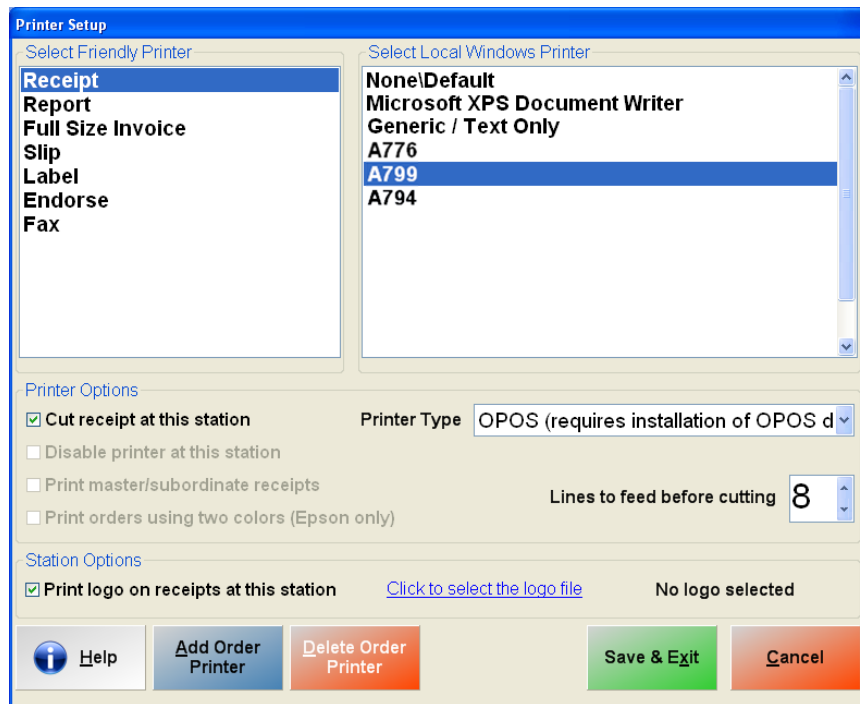


16. Select the **Destination Folder** then select **Next**.



17. Select **Next**.
18. Select **Finish**.

19. Restart the computer at this time!



1. Within CRE/RPE go to **Manager/Options** and enter the administrator password (where applicable).
2. Select **Setup**.
3. Select **Friendly Printer Setup**.
4. Highlight **Receipt** from the options on the left (**Select Friendly Printer**).
5. Highlight the appropriate HP receipt printer (**A799**) from the top right (**Select local Windows printer**).
6. Under **Printer Type** select **OPOS (requires installation of OPOS driver)**.
7. Select **Print logo on receipts at this station** then select the logo file you would like to print on receipts (if applicable).

Note: The Pixel aspect ratio for the logo must be 1:3 (i.e. if the image has a 100px height then the width must be 300px). If the image you are using is not in that aspect ratio then it will be distorted.

8. Finally select **Cut Receipt at this Station** and then **Save & Exit** to commit changes.

Configuring Cash Drawer and Printing Barcodes on Receipts

Manager

Options

1. Select the **Manager** or **Options** button.
2. Enter the administrator password (default: admin) where applicable.
3. Select **Setup** then, **Setup Screen**.

The screenshot shows the 'Setup Screen' window with the 'Hardware' tab selected. The 'Cash Drawer' section is expanded, showing 'Open Default Drawer' selected and 'Default Cash Drawer Port' set to 'OPOS:A799-1'. The 'Hardware' tab label is also highlighted with a red box.

4. Select the **Hardware** tab, then for **Default Cash Drawer Port**, select **OPOS: A799-1**.

The screenshot shows the 'Setup Screen' window with the 'Receipt' tab selected. The 'Receipt' tab is highlighted with a red box. Two checkboxes are checked and highlighted with red boxes: 'Print Bar Code On "On-Hold" Receipts' and 'Print Bar Code On "Complete" Receipts'. The 'Update' button at the bottom is also highlighted with a red box.

5. Select the **Receipt** tab.
6. Check **Print Bar Code On "On-Hold" Receipts**.
7. Check **Print Bar Code On "Complete" Receipts**.
8. Select **Update** to save your changes.