

## HP USB-MSR Configuration in Windows 7 64BIT



In order to work with pcAmerica's software, all MSR's (magnetic swipe readers) need to read from either track 2, or track 1 and track 2. When swiped into notepad a credit card should look like this (including the carriage return);

```
;1234567891234567=12345678912345678912?
```

or

```
%B1234567891234567^TEST CARD^12345678912345678912?
```

```
;1234567891234567=12345678912345678912?
```

If when swiped in notepad the result is different then what is shown above the MSR may require additional configuration to work in CRE/RPE.

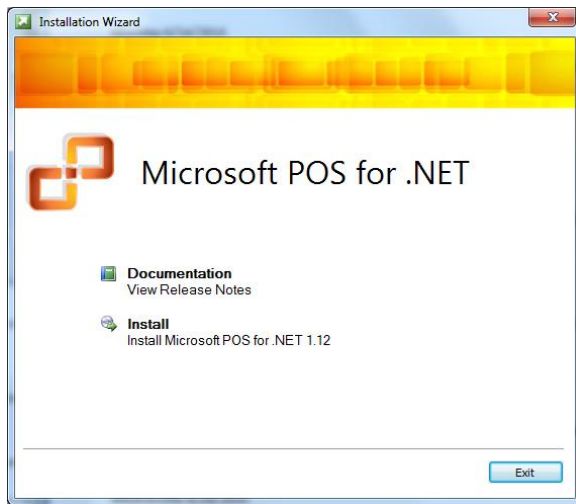
**NOTE: To install OPOS drivers CRE/RPE Must be running version 12.00 or above.**

This can be checked at the login screen by going to **File** then **About**.

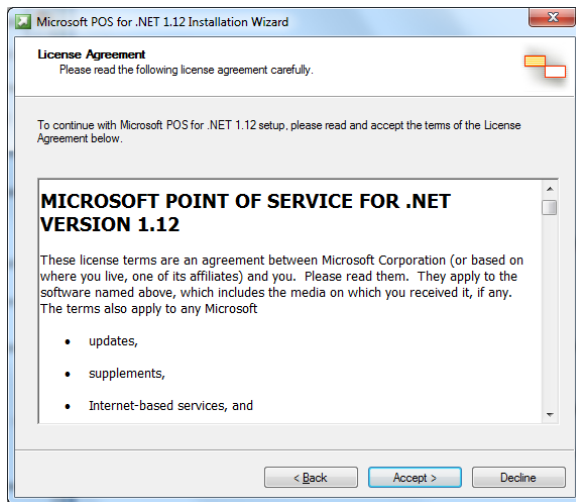
## Installing Microsoft POS for .NET

The installer for Microsoft POS for .NET can be downloaded at:

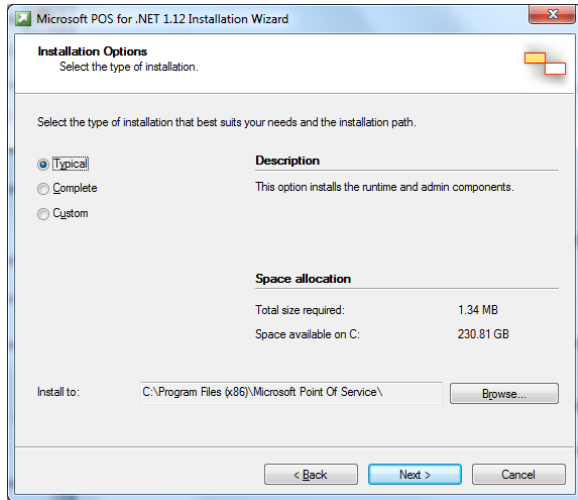
- [http://download2.pcamerica.com/drivers/POS\\_for\\_.Net.exe](http://download2.pcamerica.com/drivers/POS_for_.Net.exe)



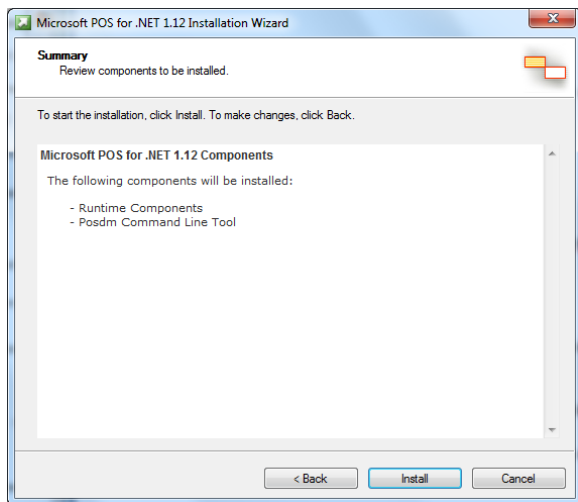
1. Run the installer and select **Install**.
2. Enter a **User Name** and **Organization** and select **Next**.



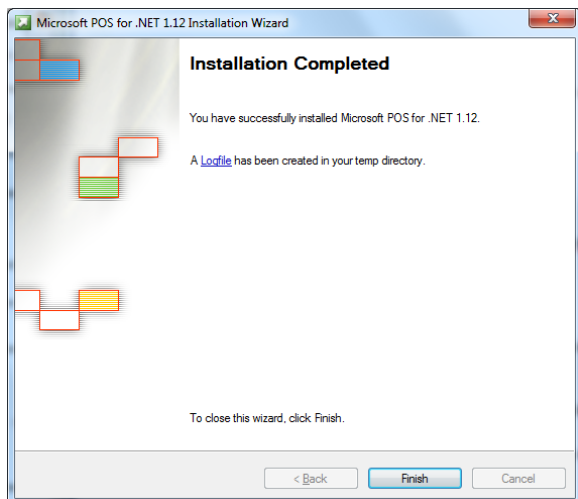
3. Select **Accept**.



4. Select **Typical** and then **Next**.



5. Select **Install**.



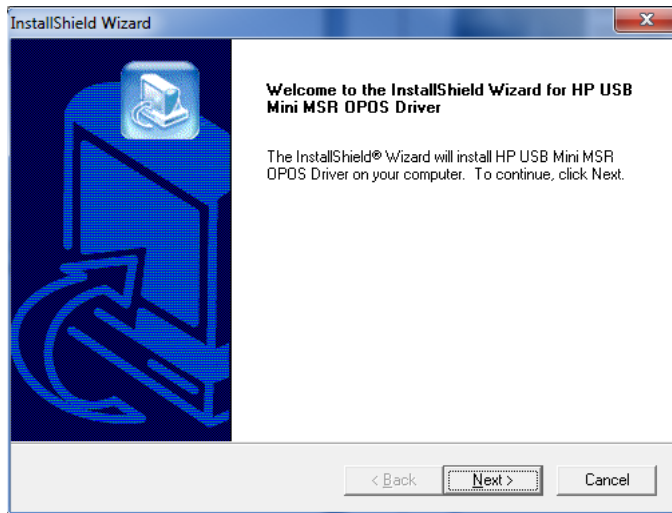
6. Select **Finish**.

## Installing OPOS Drivers for HP MSR

The configuration software can be downloaded at:

- [http://download2.pcamerica.com/drivers/7/Manufacturer/HP/x64/HP\\_MSR\\_7\\_x64\\_Drivers.zip](http://download2.pcamerica.com/drivers/7/Manufacturer/HP/x64/HP_MSR_7_x64_Drivers.zip)

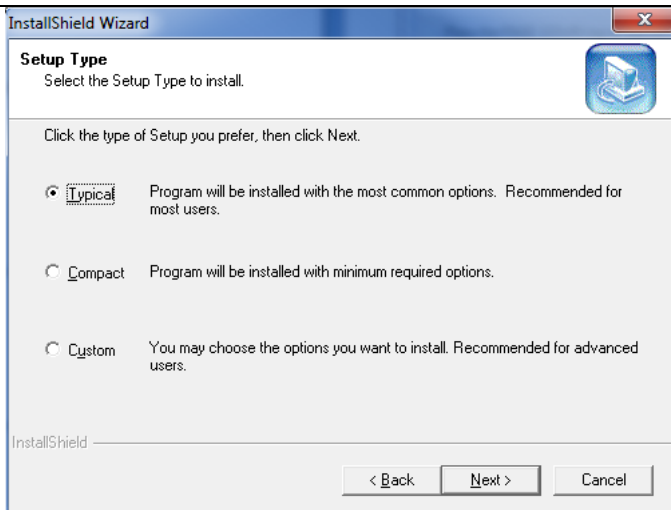
**NOTE:** The configuration software must be extracted before use.



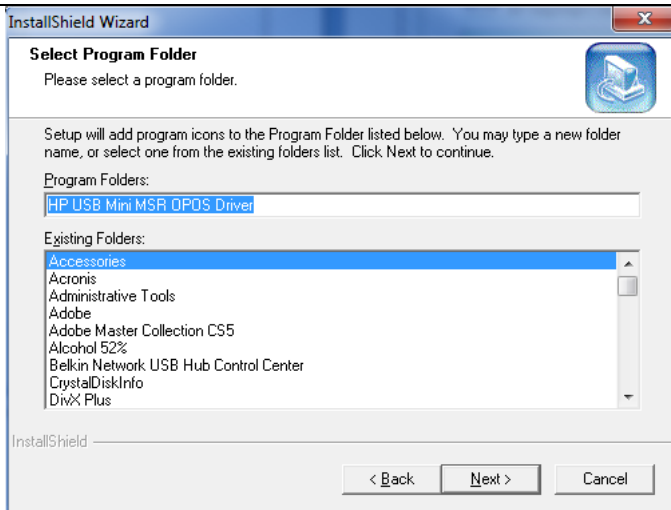
1. Select **Next**.



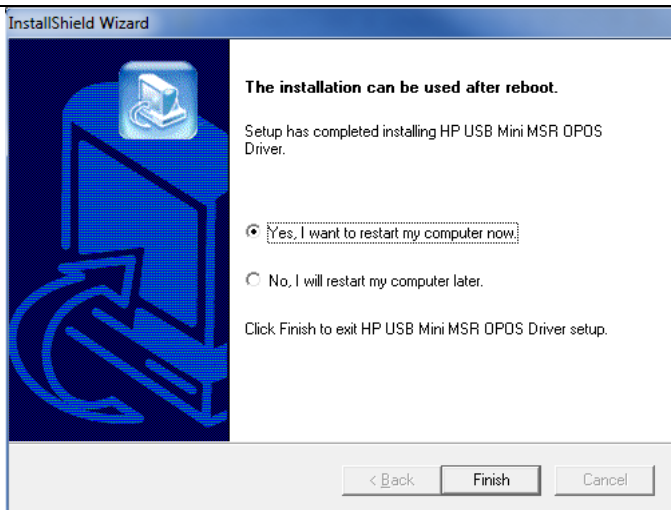
2. Select **Yes**.



3. Select **Typical**.
4. Select **Next**.



5. Select **Next**.



6. Select **Yes, I want to restart my computer now**.
7. Select **Finish**.