

HP USB-MSR Configuration in Windows 7



In order to work with pcAmerica's software, all MSR's (magnetic swipe readers) need to read from either track 2, or track 1 and track 2. When swiped into notepad a credit card should look like this (including the carriage return);

;1234567891234567=12345678912345678912?****

or

%B1234567891234567^TEST CARD^12345678912345678912?

;1234567891234567=12345678912345678912?****

If when swiped in notepad the result is different then what is shown above the MSR may require additional configuration to work in CRE/RPE.

To Configure the HP MSR to Read the Correct Information:

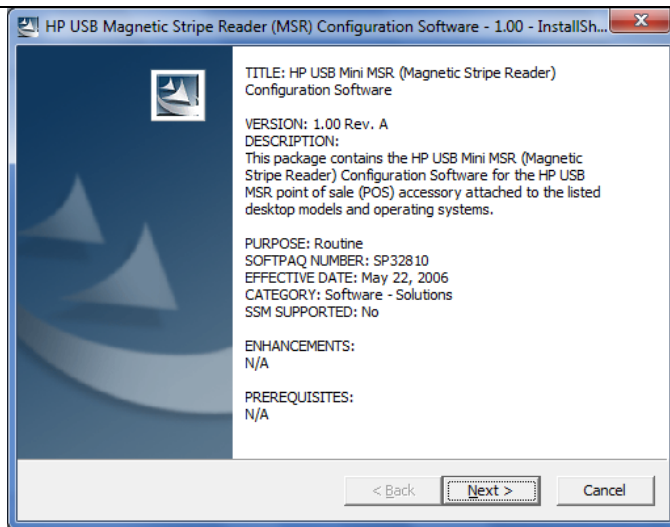


Install the configuration software
(sp32810.exe).

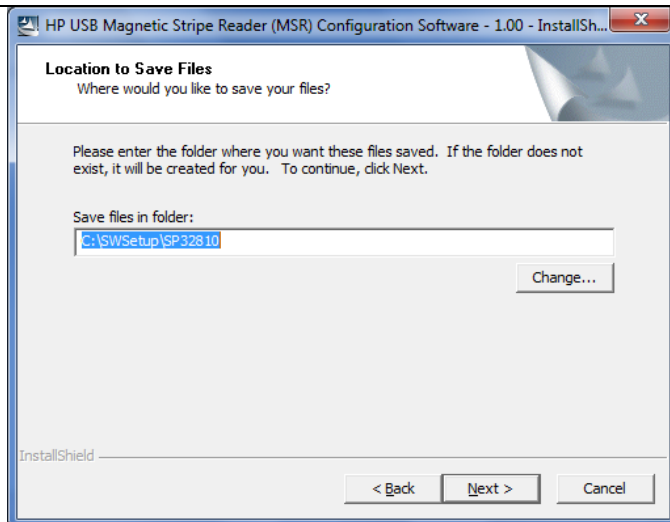
The configuration software can be downloaded at:

- <http://download2.pcamerica.com/drivers/HP.USB.MSR.Utility.zip>

NOTE: The configuration software must be extracted before use.

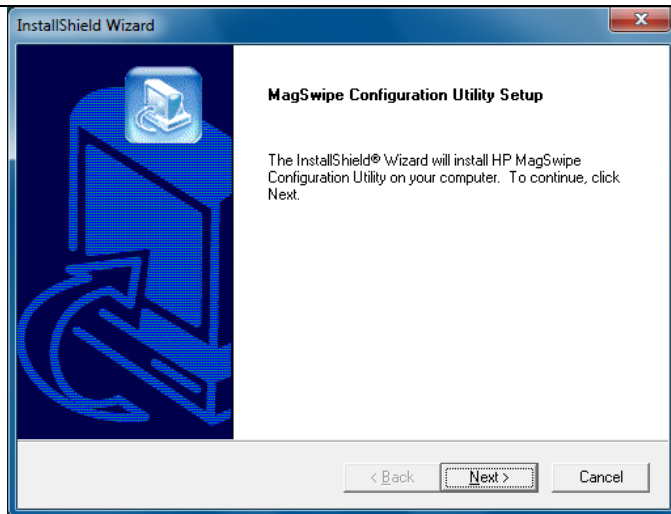


1. Select **Next**.
2. Accept the terms of the license agreement.
3. Select **Next**.

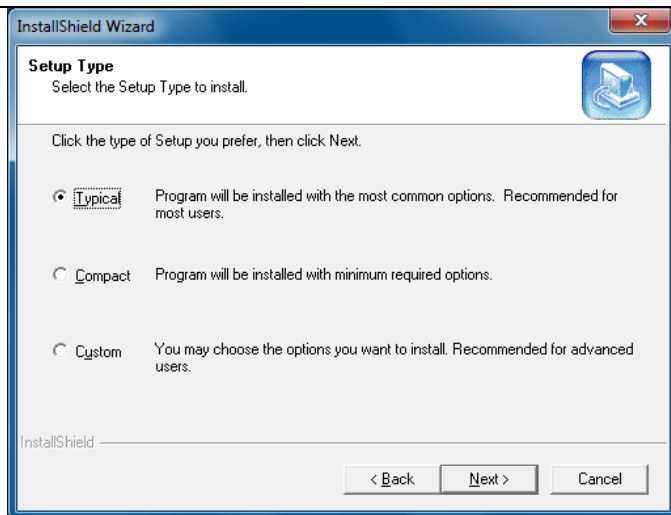


Select the location where you want the install files.

4. Select **Next**.


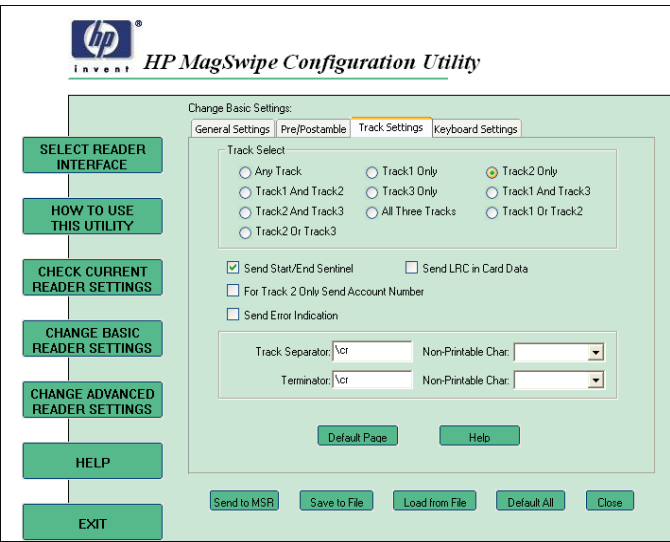


5. Select **Next**.
6. Select **Yes**.
7. Select **Yes**.
8. Input your **User Name** and **Company Name** and select **Next**.
9. Select **Next**.



10. Select **Typical** and select **Next**.
11. Select **Next**.
12. Select **Next**.
13. Select **Finish**.

Configuring the HP MSR

	<ol style="list-style-type: none"> 1. Open the HP MagSwipe Configuration Utility.
	<ol style="list-style-type: none"> 2. Select Change Basic Reader Settings and select the Track Settings tab. 3. Under Track Select, select one of the following options: <ul style="list-style-type: none"> • Track2 Only – This will only read the account information off of the card. • Track1 And Track2 – This will read the account information as well as the customer’s name (used for Bar Tabs). 4. Select Send to MSR. <p>You should receive notification that the changes were sent correctly.</p>

Note: If you are using a RP3000, or the RP5700 computer from HP you will have an additional step:

1. In Windows go to **Start**.
2. Then **Control Panel** open **Add/Remove programs**.
3. You will look for **OPOS support for HP mini USB MSR** and you will want to remove it.

This application will cause any changes you make to the configuration null.