

HP USB-MSR Configuration



In order to work with pcAmerica's software, all MSR's (magnetic swipe readers) need to read from either track 2, or track 1 and track 2. When swiped into notepad a credit card should look like this (including the carriage return);

;1234567891234567=12345678912345678912?****


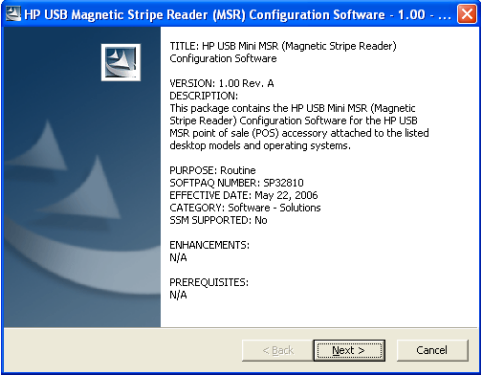
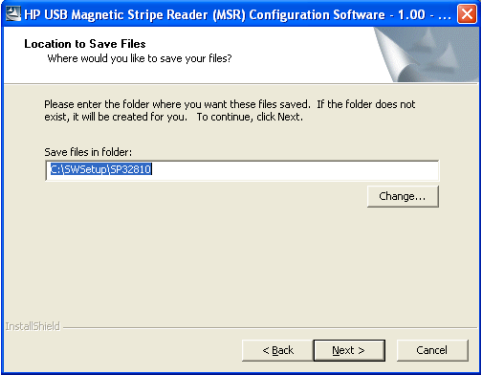
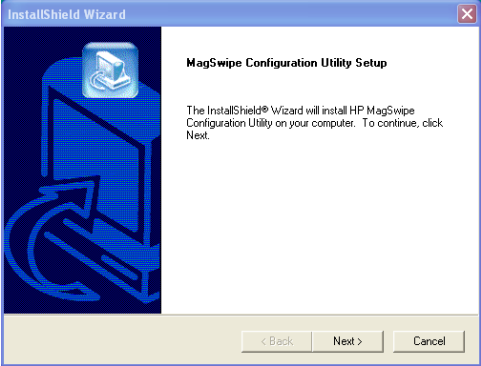
or

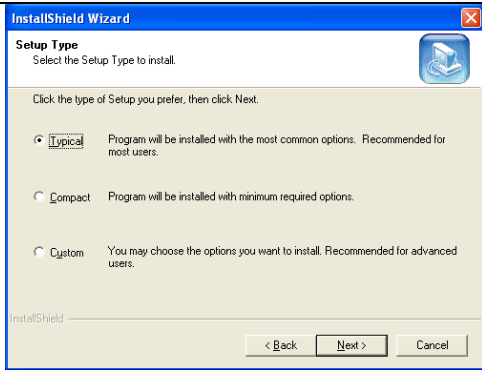
%B1234567891234567^TEST CARD^12345678912345678912?

;1234567891234567=12345678912345678912?****

If when swiped in notepad the result is different then what is shown above the MSR may require additional configuration to work in CRE/RPE.


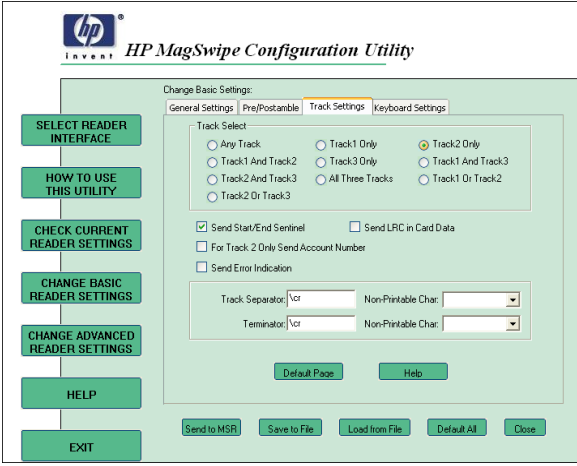
To Configure the HP MSR to Read the Correct Information:

	<p>Install the configuration software (sp32810.exe).</p>
<p>The configuration software can be downloaded at:</p> <ul style="list-style-type: none"> • http://download2.pcamerica.com/drivers/HP.USB.MSR.Utility.zip <p>NOTE: The configuration software must be extracted before use.</p>	
	<ol style="list-style-type: none"> 1. Select Next. 2. Accept the terms of the license agreement. 3. Select Next.
	<p>Select the location where you want the install files.</p> <ol style="list-style-type: none"> 4. Select Next.
	<ol style="list-style-type: none"> 5. Select Next. 6. Select Yes. 7. Select Yes. 8. Input your User Name and Company Name and select Next. 9. Select Next.



10. Select **Typical** and select **Next**.
11. Select **Next**.
12. Select **Next**.
13. Select **Finish**.

Using the Configuration Utility:

	<p>14. Open the HP MagSwipe Configuration Utility.</p>
	<p>15. Select Change Basic Reader Settings and select the Track Settings tab.</p> <p>16. Under Track Select, select one of the following options:</p> <ul style="list-style-type: none"> • Track2 Only – This will only read the account information off of the card. • Track1 And Track2 – This will read the account information as well as the customer’s name (used for Bar Tabs). <p>17. Select Send to MSR.</p> <p>You should receive notification that the changes were sent correctly.</p>

Note: If you are using a RP3000, or the RP5700 computer from HP you will have an additional step:

1. In Windows got to **Start**.
2. Then **Control Panel** open **Add/Remove programs**.
3. You will look for **OPOS support for HP mini USB MSR** and you will want to remove it.

This application will cause any changes you make to the configuration null.