

*One Blue Hill Plaza, 16<sup>th</sup> Floor, PO Box 1546*

*Pearl River, NY 10965*

*1-800-PC-AMERICA, 1-800-722-6374*

*(Voice) 845-920-0800 (Fax) 845-920-0880*

## **HP Pole Display OPOS Installation in Windows 8 (32/64BIT)**

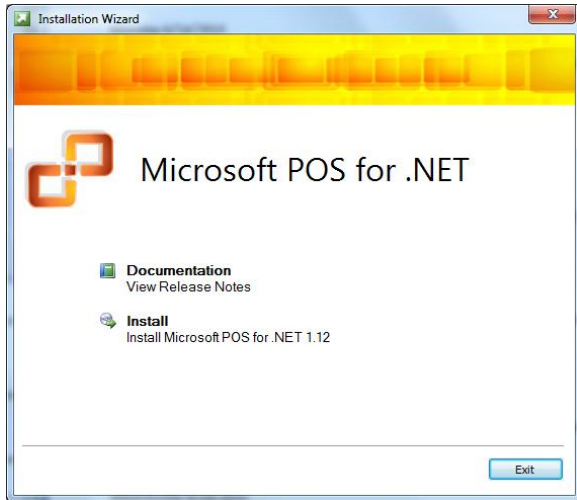


**Note:** The HP pole display requires you to be on V12.0 or higher.

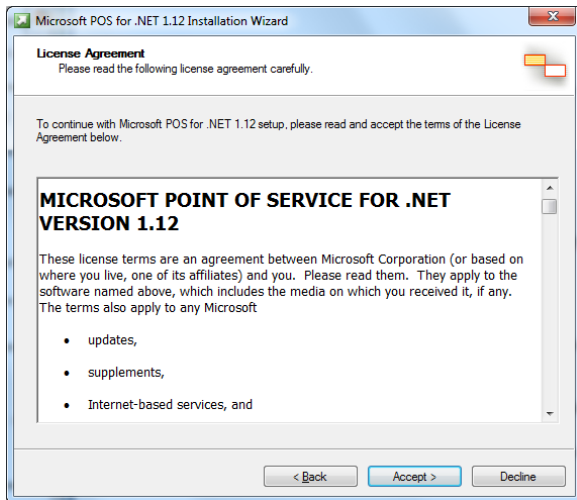
## Installing Microsoft POS for .NET

The installer for Microsoft POS for .NET can be downloaded at:

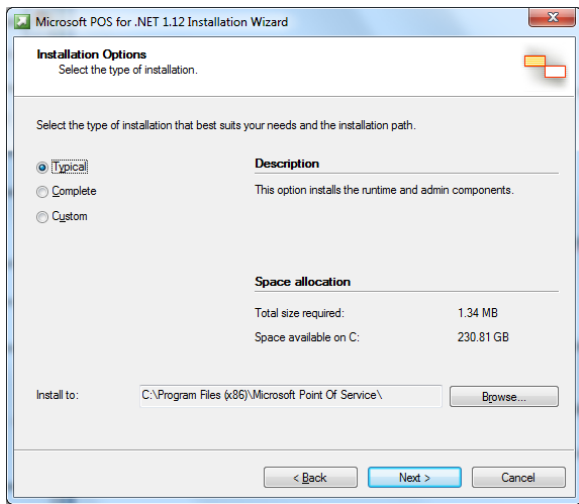
- [http://download2.pcamerica.com/drivers/POS\\_for\\_.Net.exe](http://download2.pcamerica.com/drivers/POS_for_.Net.exe)



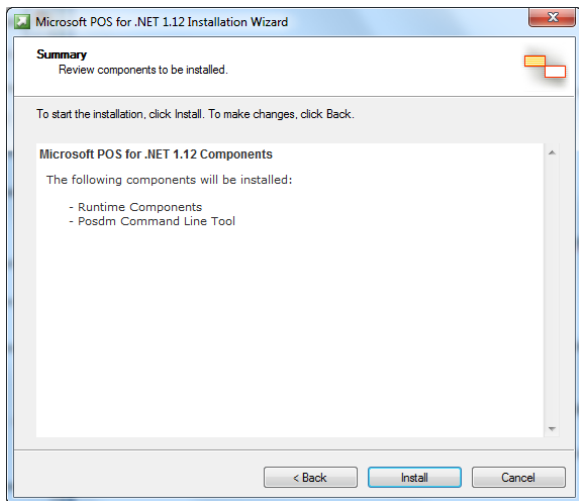
1. Run the installer and select **Install**.
2. Enter a **User Name** and **Organization** and select **Next**.



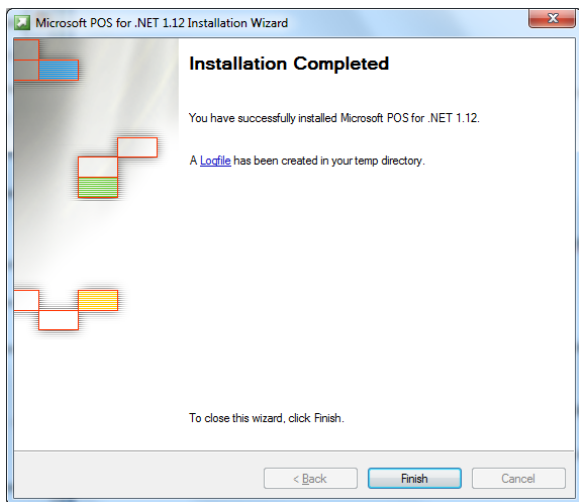
3. Select **Accept**.



4. Select **Typical** and then **Next**.



5. Select **Install**.

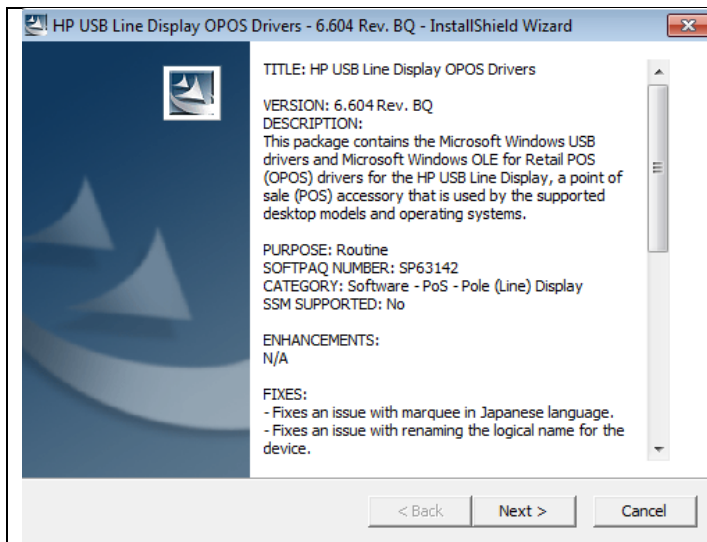


6. Select **Finish**.

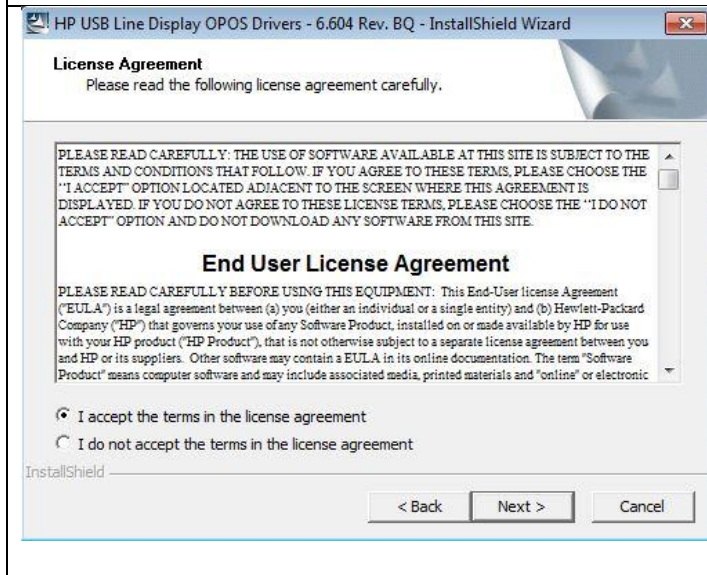
## Installing HP OPOS Driver

The OPOS driver for the HP can be downloaded from:

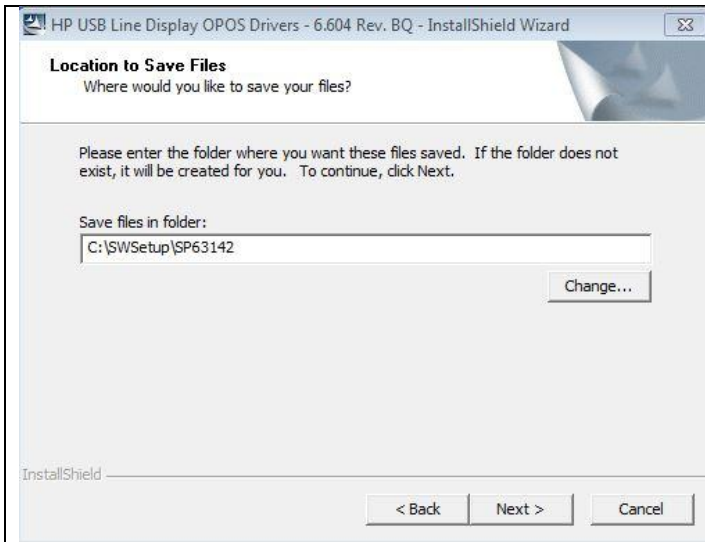
- <http://download2.pcamerica.com/drivers/8/Manufacturer/HP/HPPDwin8.zip>



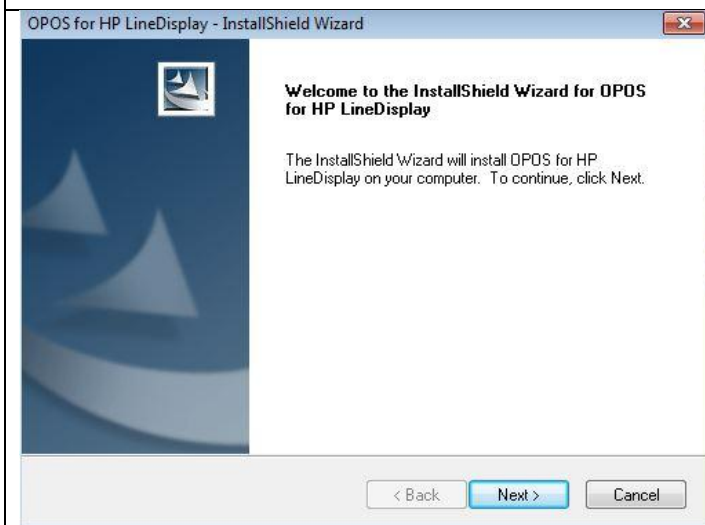
1. After downloading the driver extract and then Right-click the installer and select **Run as Administrator**.
2. Select **Yes** to the prompt.
3. Select **Next**.



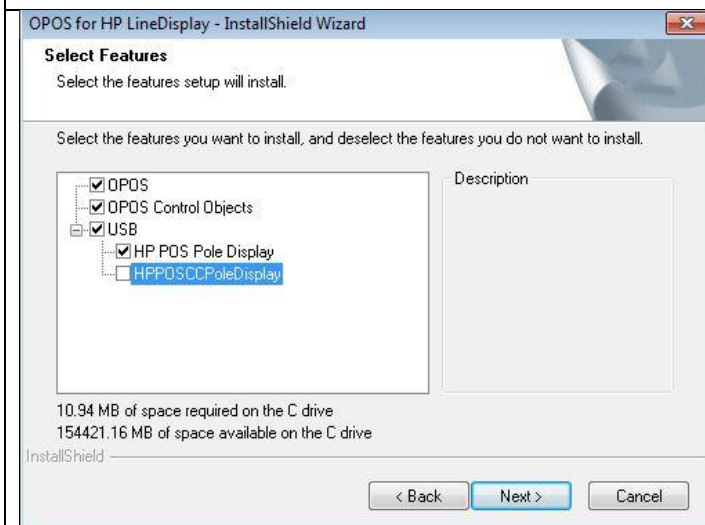
4. Select **I accept the terms in the license agreement**.
5. Select **Next**.



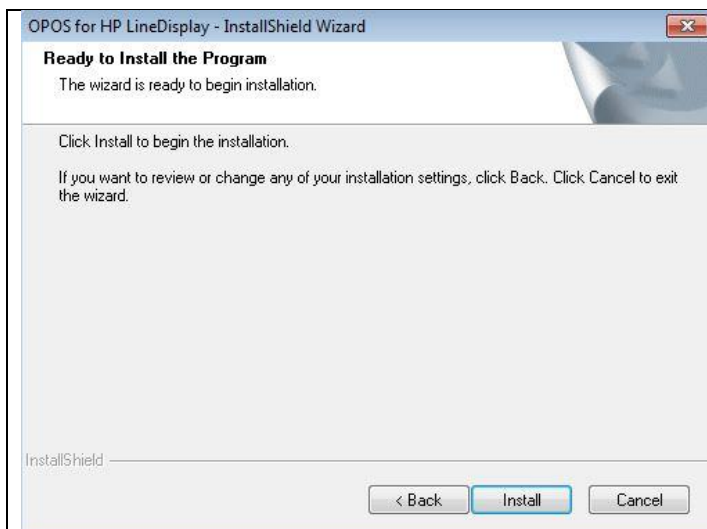
6. Select the location to save the install files and select **Next**.



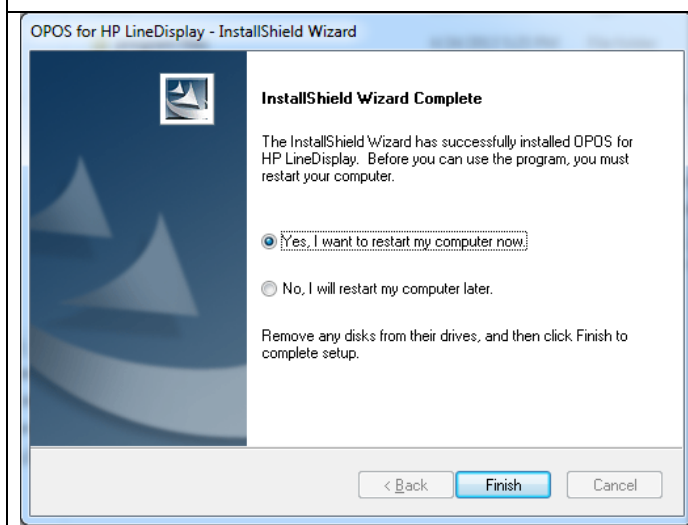
7. Select **Next**.



8. Uncheck **HPPOSCCPoleDisplay** then click **Next**.



9. Select **Install**.



10. Select **Yes, I want to restart my computer now**.

The computer **MUST** be restarted.

11. Select **Finish**.

## Configuration in CRE/RPE

1. After the connecting the pole display, start CRE/RPE.
2. Select the **Options/Manager** and enter your password (where applicable).
3. Select **Setup** and then **Setup Screen** and re-enter your password if necessary.
4. Select the **Hardware** tab.
5. Select **OPOS** for the **Pole Display Type**.
6. Select **HP POS Pole Display** under **OPOS Pole Display**.
7. Select **Update** to save your changes.