

*One Blue Hill Plaza, 16<sup>th</sup> Floor, PO Box 1546*

*Pearl River, NY 10965*

*1-800-PC-AMERICA, 1-800-722-6374*

*(Voice) 845-920-0800 (Fax) 845-920-0880*

## **HP Pole Display OPOS Installation in Windows 7 (32/64BIT)**

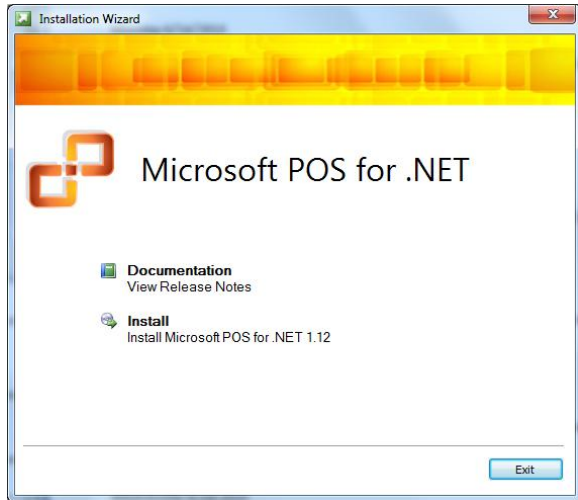


**Note:** The Hp pole display requires you to be on V12.0 or higher.

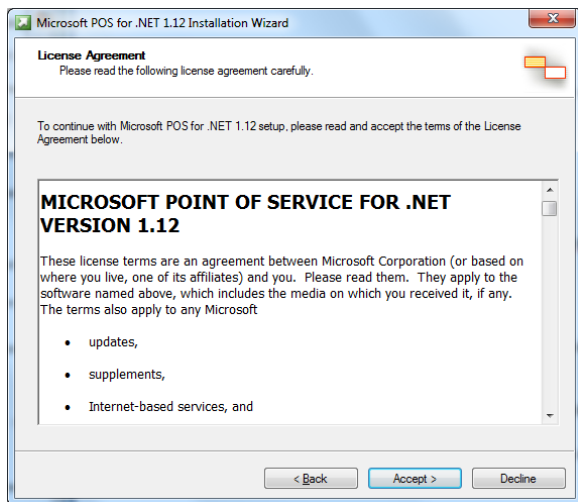
## Installing Microsoft POS for .NET

The installer for Microsoft POS for .NET can be downloaded at:

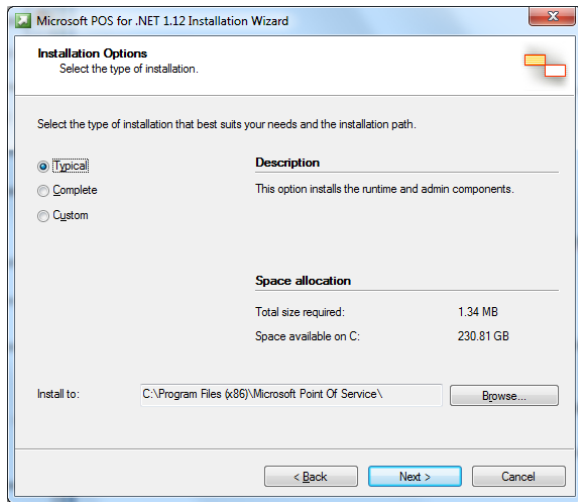
- [http://download2.pcamerica.com/drivers/POS\\_for\\_.Net.exe](http://download2.pcamerica.com/drivers/POS_for_.Net.exe)



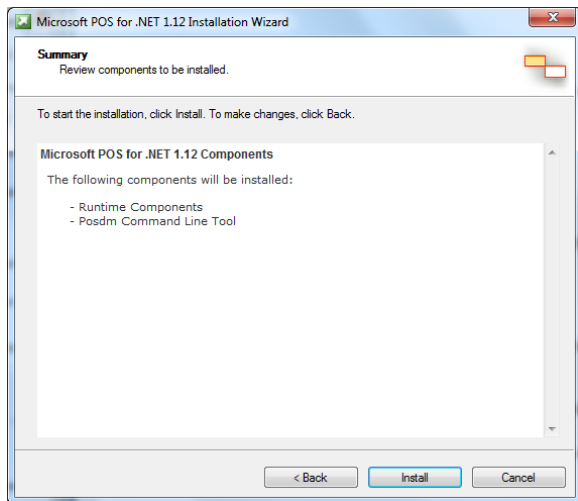
1. Run the installer and select **Install**.
2. Enter a **User Name** and **Organization** and select **Next**.



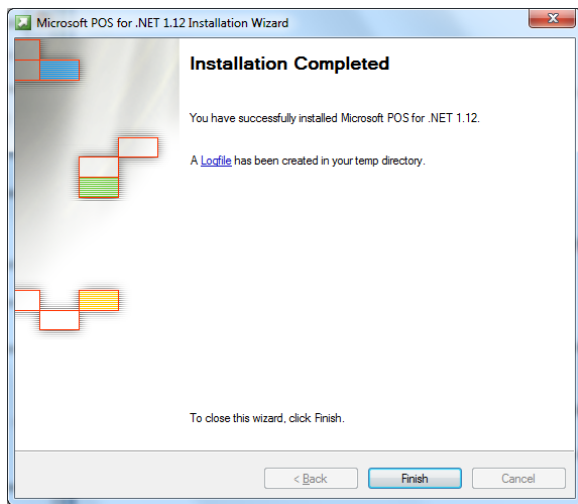
3. Select **Accept**.



4. Select **Typical** and then **Next**.



5. Select **Install**.

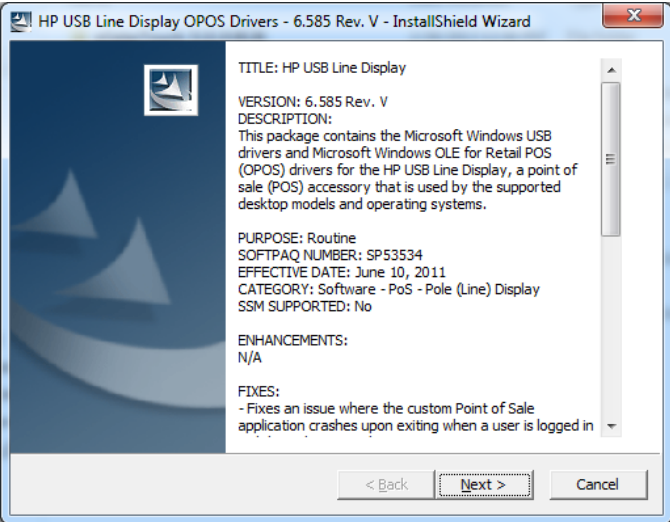



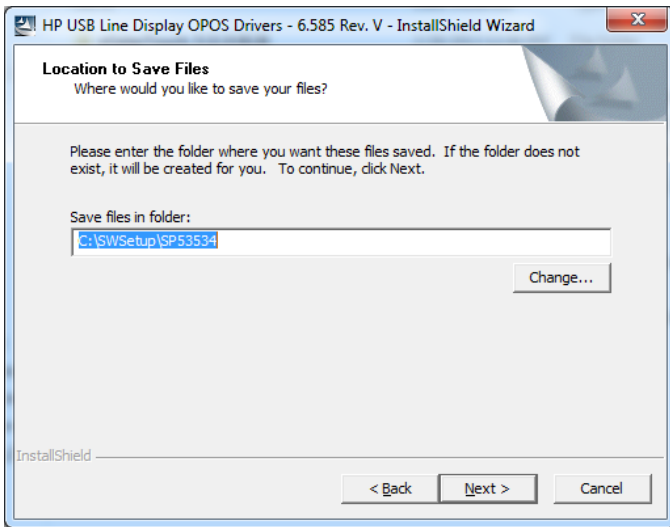
6. Select **Finish**.

## Installing HP OPOS Driver

The OPOS driver for the HP can be downloaded from:

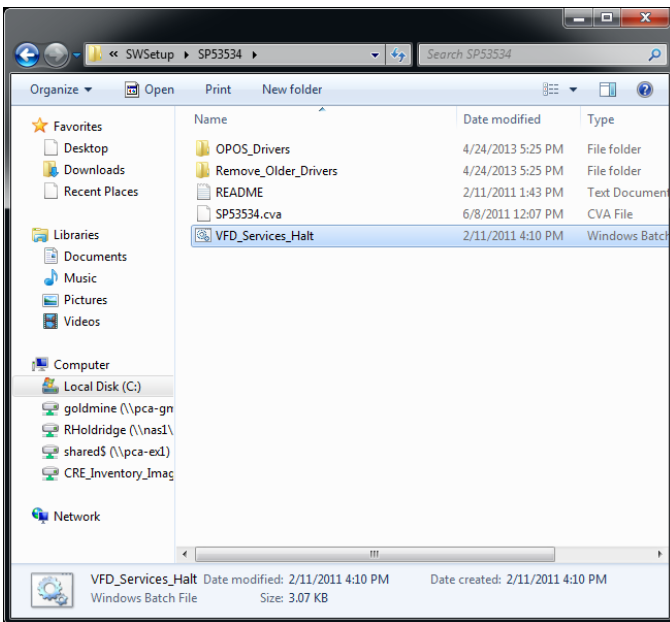
- [http://download2.pcamerica.com/drivers/Manufacturer/HP/HP\\_Pole\\_Display\\_OPOS.zip](http://download2.pcamerica.com/drivers/Manufacturer/HP/HP_Pole_Display_OPOS.zip)

	<ol style="list-style-type: none"><li>1. After downloading the driver extract and then Right-click the installer and select <b>Run as Administrator</b>.</li><li>2. Select <b>Yes</b> to the prompt.</li><li>3. Select <b>Next</b>.</li></ol>
	<ol style="list-style-type: none"><li>4. Select <b>I accept the terms in the license agreement</b>.</li><li>5. Select <b>Next</b>.</li></ol>



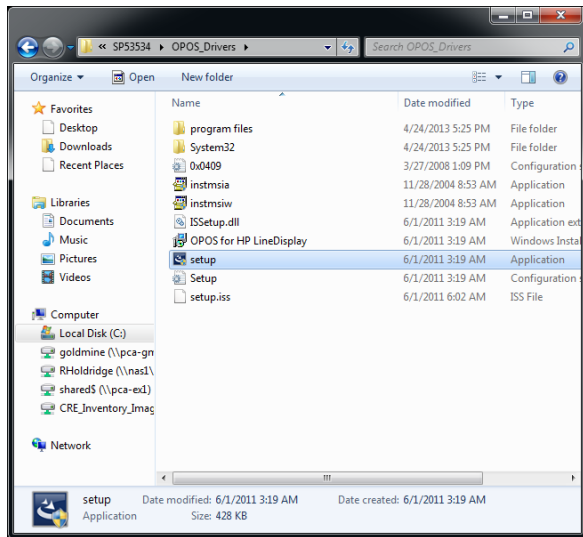
6. Select the location to save the install files and select **Next**.

A README.txt file will open which will give you instructions on what to do next, Please follow the steps in this doc to install the pole display correctly with CRE.

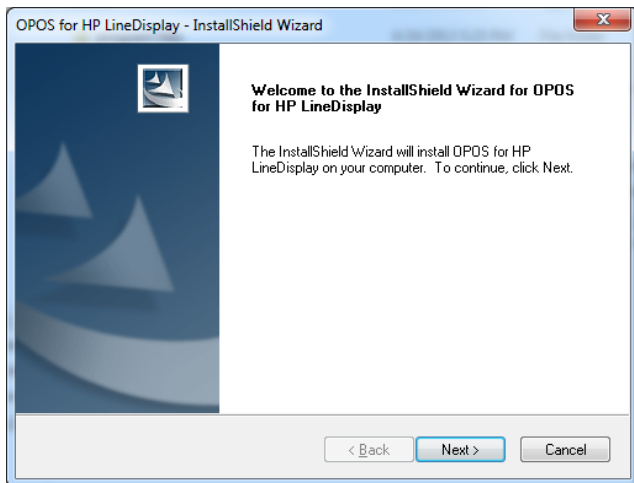


At this point you will need to be logged in as an Administrator.

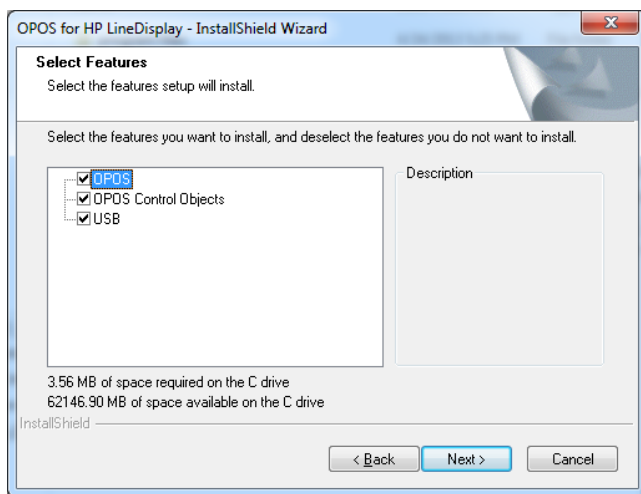
7. Navigate to the following folder:
  - C:\SWSetup\SP53534
8. Right-click the **VFD\_Services\_Halt.BAT** file and select **Run as Administrator**.
9. Select **Yes** to the prompt.
10. Reboot the computer.



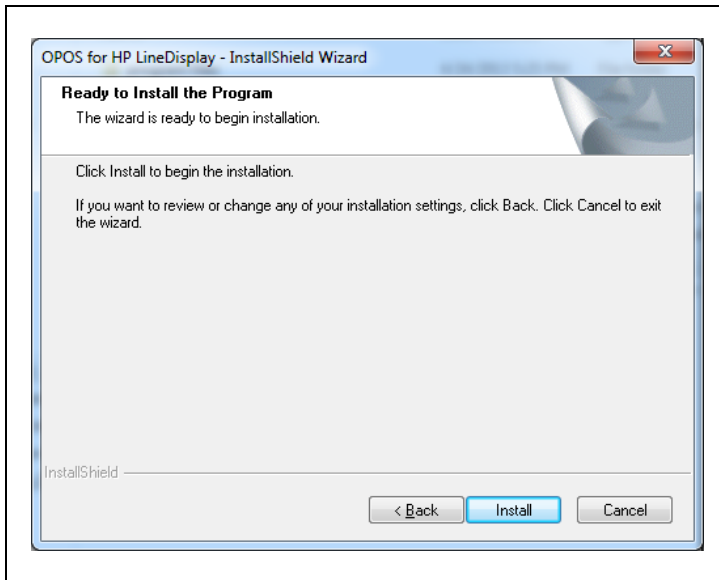
11. Navigate to the following folder:
  - C:\SWSetup\SP53534\OPOS\_Drivers
12. Right-click the **setup.exe** file and select **Run as Administrator**.
13. Select **Yes** to the prompt.



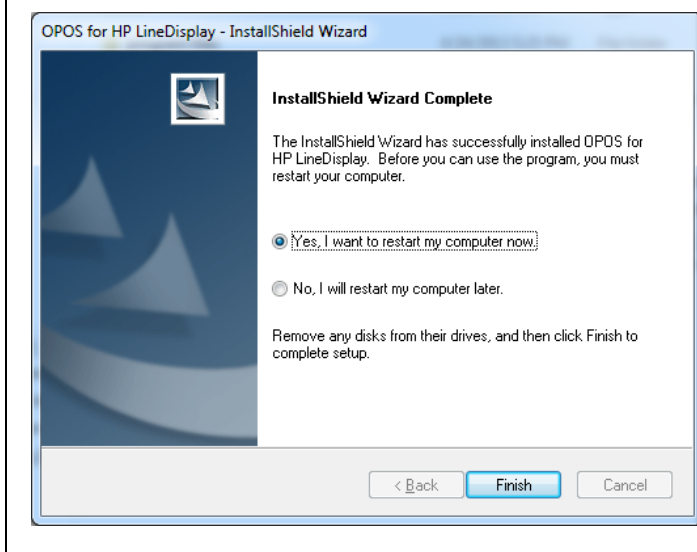
14. Select **Next**.



15. Make sure all the options to be installed are checked and select **Next**.



16. Select **Install** to install the Driver.



17. Select **Yes, I want to restart my computer now.**

The computer **MUST** be restarted.

18. Select **Finish.**

## Configuration in CRE/RPE

Setup Screen

Account Control | Company Info | Couponing | Hardware | Internet Features | Inventory | Invoice Settings

Payment Processing | Quick Invoicing & Alerts | Quick-Add | Receipt | Reports

Restaurant Features | Station Specifics | System Access | Touch Screen

Page 1 | Page 2 | Page 3

**Pole Display Port**

None  
 COM1  
 COM2  
 COM3  
 COM4  
 COM5  
 USB  
 Other

**Pole Display Type**

General  
 Casio \ Touch Dynamic  
 Virtual  
 Posiflex  
 Toshiba  
 OPOS

**OPOS Pole Display**

PoleDisplay Port  
HP POS Pole Display

**PinPad Port**

None  
 COM1  
 COM2  
 COM3  
 COM4  
 COM5  
 COM6  
 Other

**PinPad Type**

None

**PinPad Connection**

Serial

**PinPad IP Address**

**PinPad IP Port**

0

**Weight Scale - Primary**

None  
 COM1  
 COM2  
 COM3  
 COM4  
 COM5  
 COM6  
 Other

**Primary Scale Type**

CAS PD-1

**Weight Scale - Secondary**

None  
 COM1  
 COM2  
 COM3  
 COM4  
 COM5  
 COM6  
 Other

**Secondary Scale Type**

CAS PD-1

**Cash Drawer**

Cash Drawer  
 Open Default Drawer  
 Open Employee Drawer

**Default Cash Drawer Port**

NONE

Check drawer open status (Epson only)

**Scale**      **Update**      **Exit**

1. After the connecting the pole display, start CRE/RPE.
2. Select the **Options/Manager** and enter your password (where applicable).
3. Select **Setup** and then **Setup Screen** and re-enter your password if necessary.
4. Select the **Hardware** tab.
5. Select **OPOS** for the **Pole Display Type**.
6. Select **HP POS Pole Display** under **OPOS Pole Display**.
7. Select **Update** to save your changes.