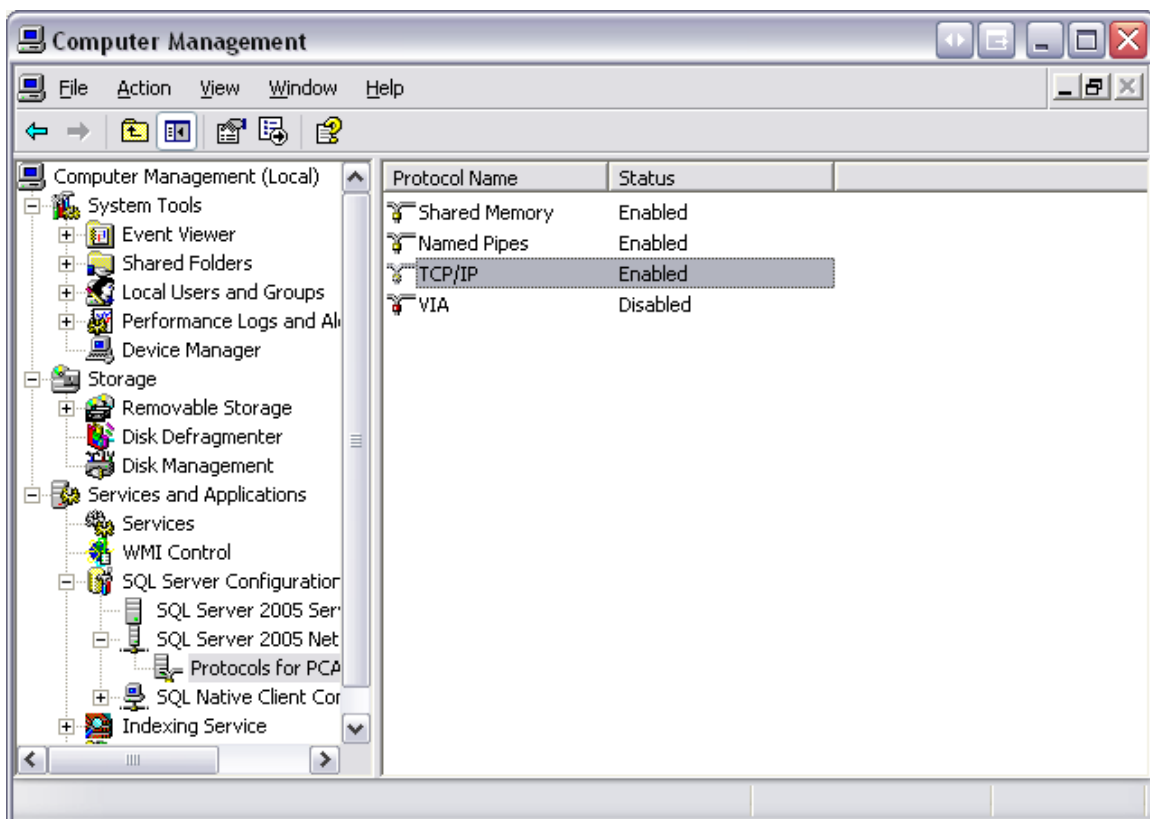


## Enabling Protocols for CRE/RPE

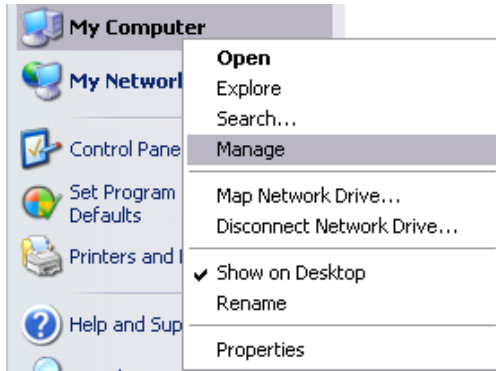


In order for CRE/RPE to work correctly the following protocols must be running; Shared Memory, Named Pipes, and TCP/IP. Please, follow the instructions in this document to ensure that they are enabled. These instructions apply to SQL versions 2005, 2008, and 2012.

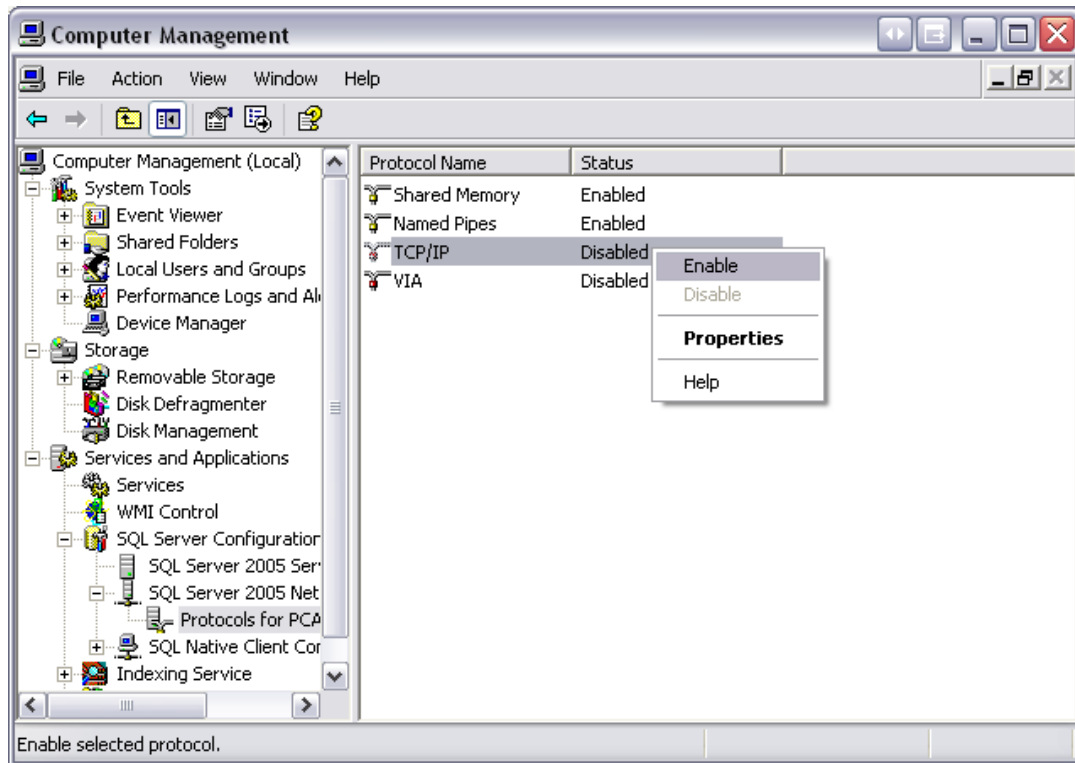
## Manually installing SQL Server



1. Select **Start**.

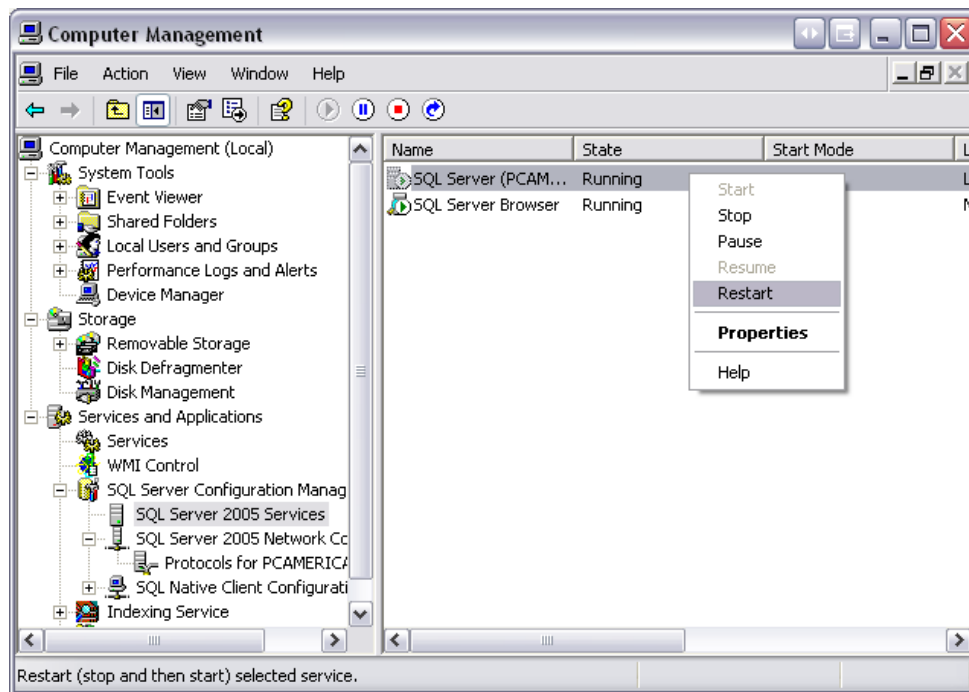


2. Right-click on **My Computer** and select **Manage**.



3. Select the + sign next to **Services and Applications**.
4. Select the + sign next to **SQL Server 20xx Network Configuration**.
5. Select **Protocols for PCAMERICA**.
6. Right-click on the following three protocols and select **Enable**:
  - **Shared Memory**
  - **Named Pipes**
  - **TCP/IP**

Note: you may receive an error message stating that the changes will not be committed until the service has been restarted.



7. Select **SQL Server 20xx Services** and then right-click on the following services and select **Restart**:
  - **SQL Server (PCAMERICA)**
  - **SQL Server Browser**