

ELO Touchscreen Driver Installation

for Windows 7 32/64BIT



REQUIRED ITEMS

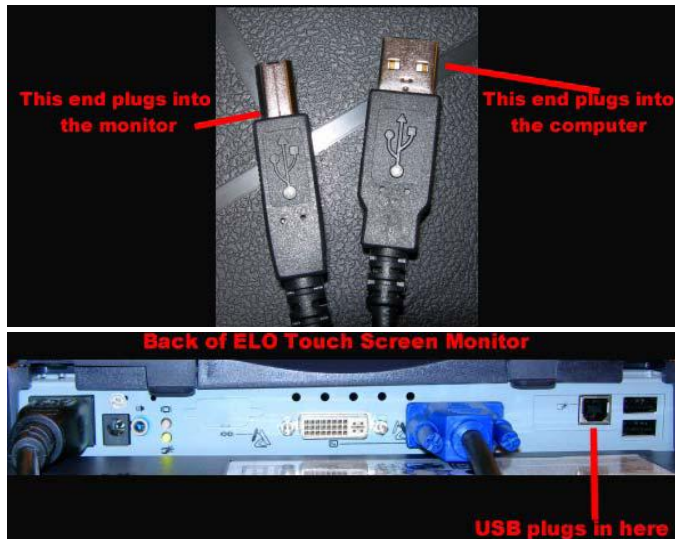
Elo touchscreen

USB cable

Monitor video (VGA) cable

Computer with a free USB port

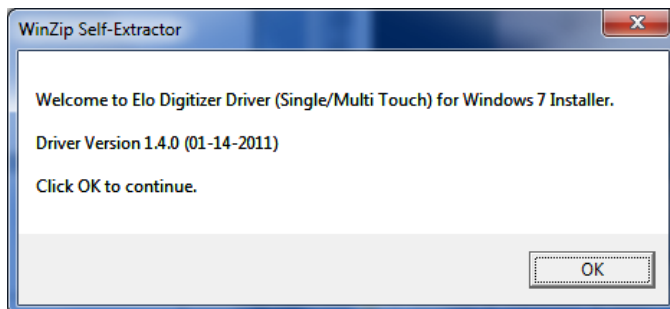
Connecting your Elo touchscreen to the computer



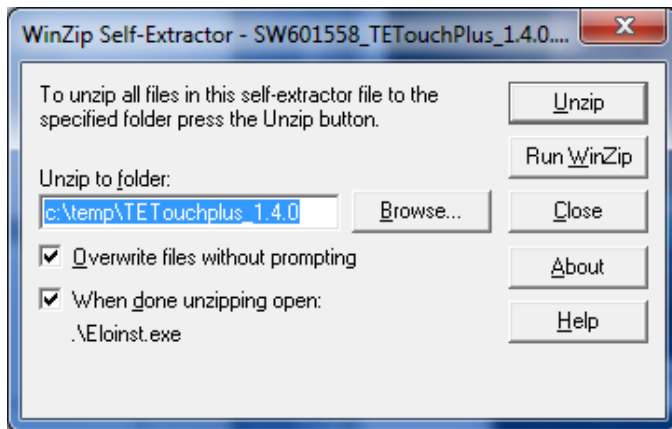
1. Plug one end of the USB cable into the computer and the other end into the touchscreen.

2. Plug the video cable into the computer.
3. If you have the Elo install CD, wait for setup to launch and skip the next step.
4. You can download the appropriate driver from:

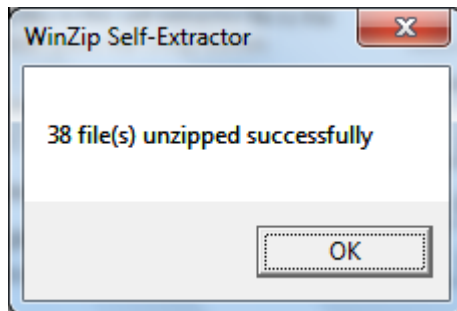
http://download2.pcamerica.com/drivers/7/Manufacturer/ELO/ELO_7.zip



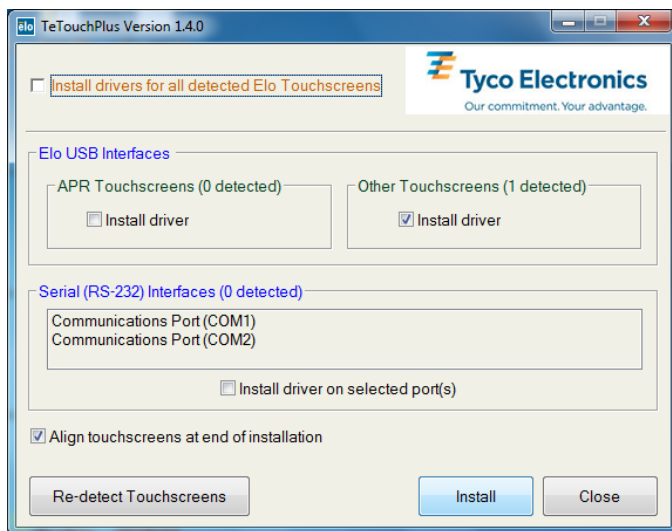
5. Launch the executable.
6. Select **OK**.



7. Select the location to unzip the files to and then select **Unzip**.



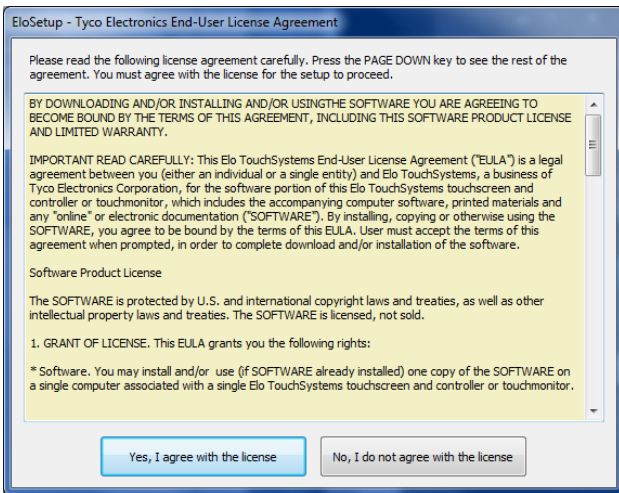
8. Select **OK**.



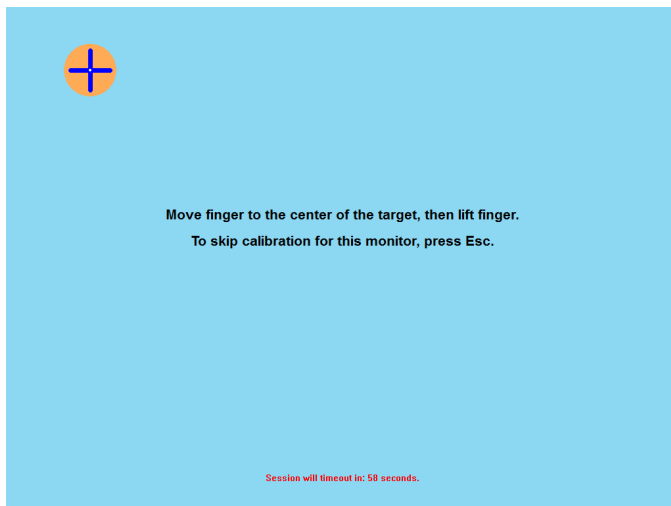
9. Under where the monitor is detected select **Install driver**.

10. Select **Align touchscreens at end if installation**.

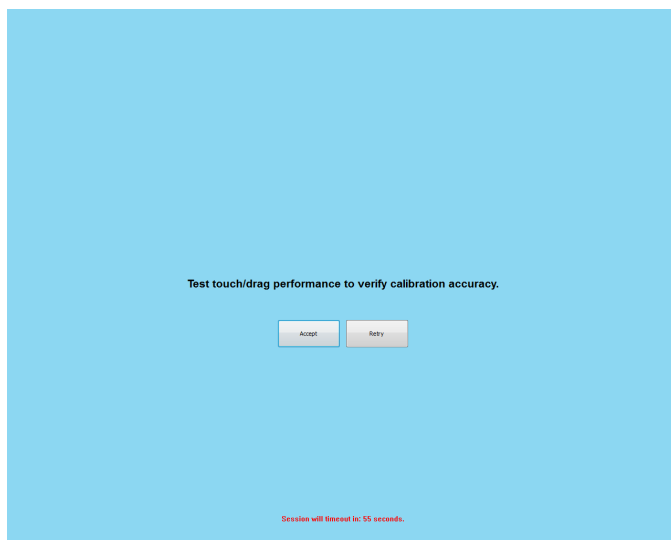
11. Select **Install**.



12. Select **Yes, I agree with the license.**


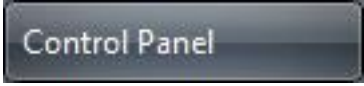
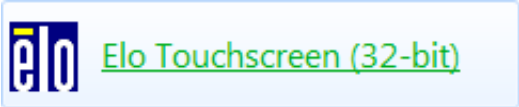
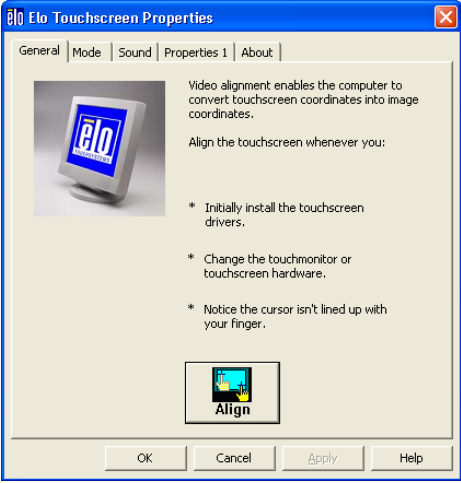



13. Follow the first set of instructions to properly align your touchscreen monitor.



14. Touch all around the screen and drag your finger, if the monitor is behaving correctly select **Accept.**

Calibrating your Touchscreen Monitor

	<ol style="list-style-type: none">1. Select Start.
	<ol style="list-style-type: none">2. Select Control Panel.
	<ol style="list-style-type: none">3. Select Elo Touchscreen.
 <p>The dialog box shows the 'General' tab with an 'Align' button. The text reads: 'Video alignment enables the computer to convert touchscreen coordinates into image coordinates. Align the touchscreen whenever you: * Initially install the touchscreen drivers. * Change the touchmonitor or touchscreen hardware. * Notice the cursor isn't lined up with your finger.'</p>	<ol style="list-style-type: none">4. Select Align.
 <p>Move finger to the center of the target, then lift finger. To skip calibration for this monitor, press Esc.</p> <p>Session will timeout in: 58 seconds.</p>	<ol style="list-style-type: none">5. Follow the on-screen instructions to align the touchscreen.