

Programming a Cherry Keyboard

MSR to Read Tracks 1 & 2



This document covers configuring the integrated MSR on a Cherry Keyboard to read track 1 & track 2.

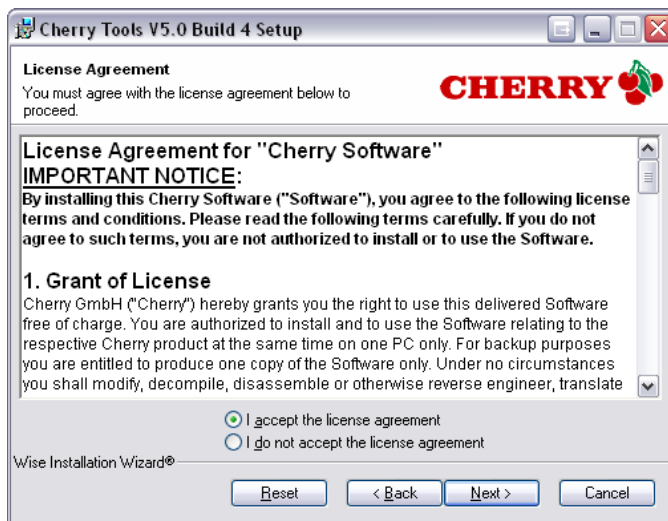
Installing Cherry Tools and Configuring the Device

You can download Cherry Tools from:

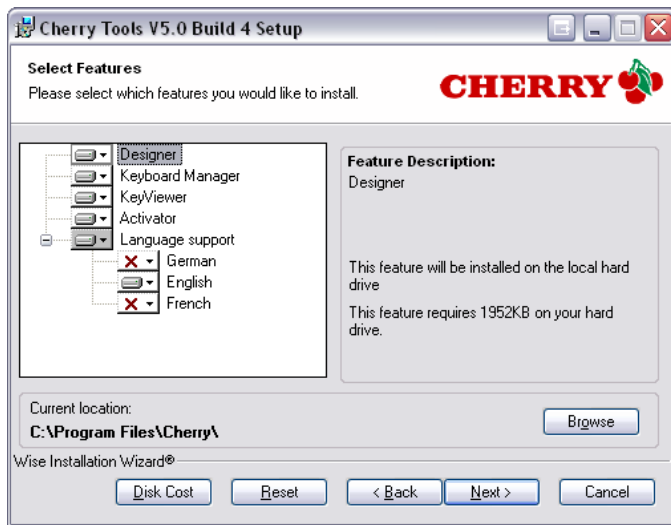
http://download2.pcamerica.com/drivers/Cherry_Tools.zip



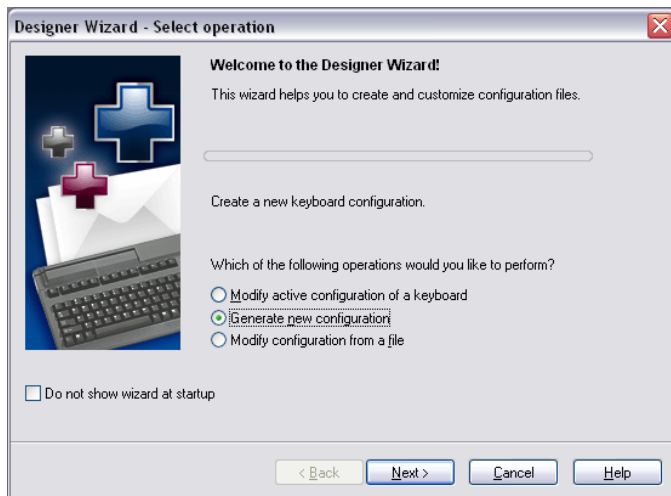
1. Select **Next**.



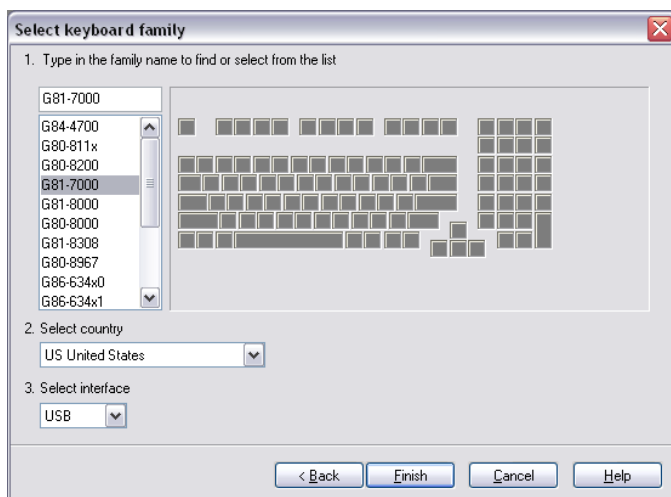
2. Select **I accept the license agreement** then select **Next**.



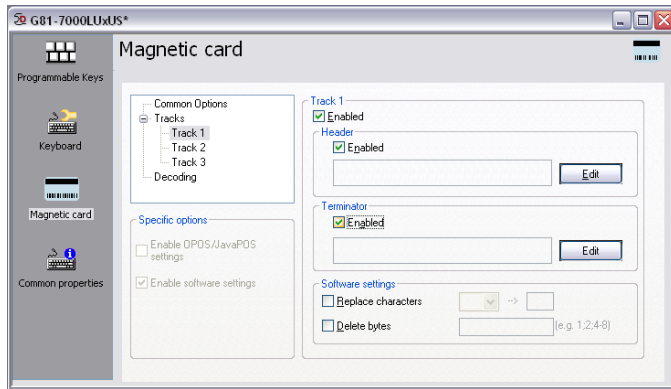
3. Select the option which you would like to install then select **Next**.
4. Select **Next** again and the installation will begin.
5. Select **Finish**.
6. Select **Yes** to restart the machine.



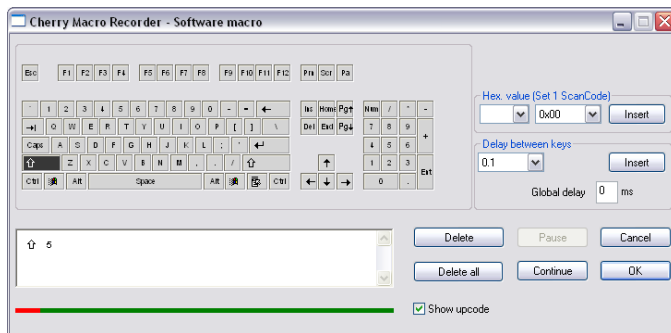
7. **After the restart open the Cherry Designer software.**
8. Select **Generate new configuration** and then select **Next**.



9. Select the Keyboard you have and then select the country and finally the interface.
10. Select **Finish**.

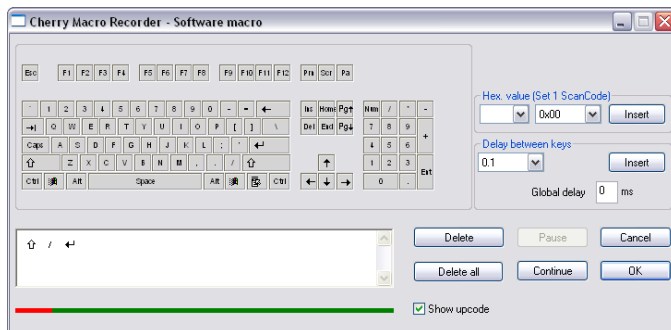


11. Select the **Magnetic card** tab on the left.
12. Under Tracks select **Track 1** and then make sure that **Enabled** is checked.
13. Under **Header** make sure that **Enabled** is checked.
14. Under **Terminator** make sure that **Enabled** is checked.



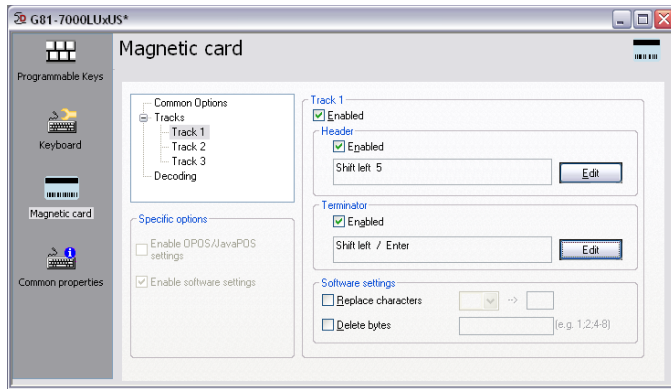
15. Under **Track 1 Header** select **Edit**.
16. Press the **Shift** key on your keyboard (or on screen) then the **5** key, select **OK**.

We are entering a % sign which is typed on the keyboard by pressing shift then the number 5.



17. Under **Track 1 Terminator** select **Edit**.
18. Press the **Shift** key on your keyboard (or on screen) then the **/** key, finally select the **Enter** key, and then select **OK**.

We are entering a ? (question mark) followed by a carriage return (Enter key).

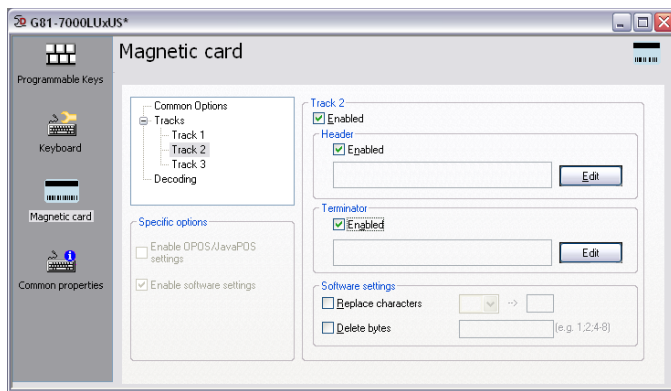


19. Under **Header** the following should be in the field:

- **Shift left 5**

20. Under **Terminator** the following should be in the field:

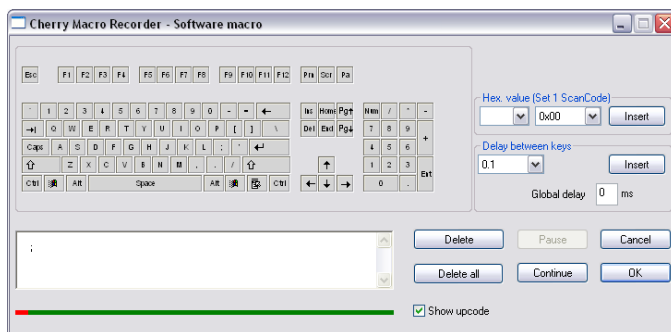
- **Shift left / Enter**



21. Under Tracks select **Track 2** and then make sure that **Enabled** is checked.

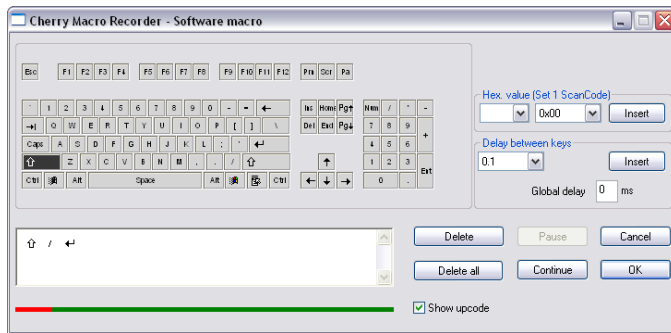
22. Under **Header** make sure that **Enabled** is checked.

23. Under **Terminator** make sure that **Enabled** is checked.



24. Under **Track 2 Header** select **Edit**.

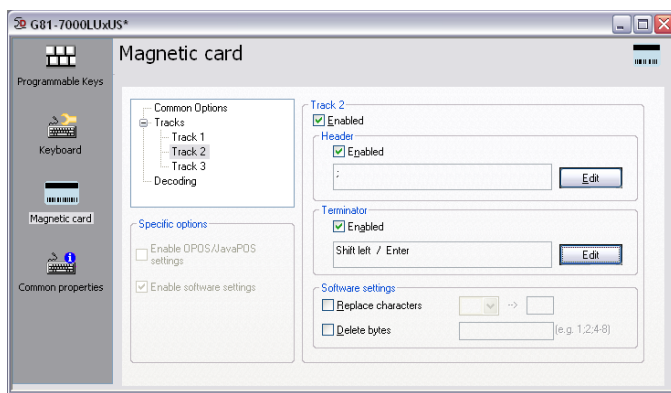
25. Press the **Semicolon (;)** key on your keyboard (or on screen) then, select **OK**.



26. Under **Track 2 Terminator** select **Edit**.

27. Press the **Shift** key on your keyboard (or on screen) then the **/** key, finally select the **Enter** key, and then select **OK**.

We are entering a ? (question mark) followed by a carriage return (Enter key).

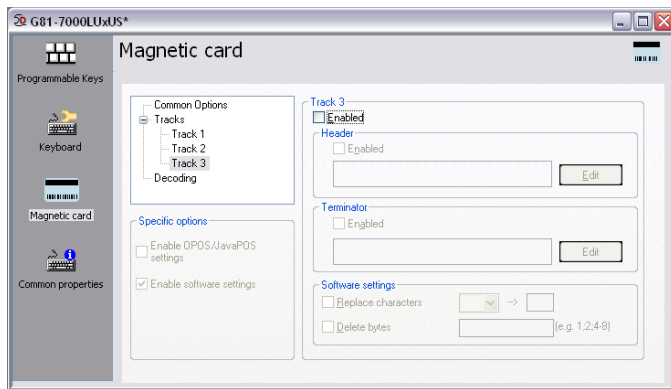


28. Under **Header** the following should be in the field:

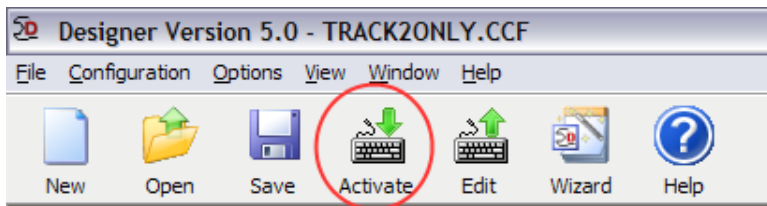
- ;

29. Under **Terminator** the following should be in the field:

- **Shift left / Enter**



30. Under Tracks select **Track 3** and then **un-check Enabled**



31. Select **Activate**, which will send the new configuration information to the keyboard.