

One Blue Hill Plaza, 16th Floor, PO Box 1546

Pearl River, NY 10965

1-800-PC-AMERICA, 1-800-722-6374

(Voice) 845-920-0800 (Fax) 845-920-0880

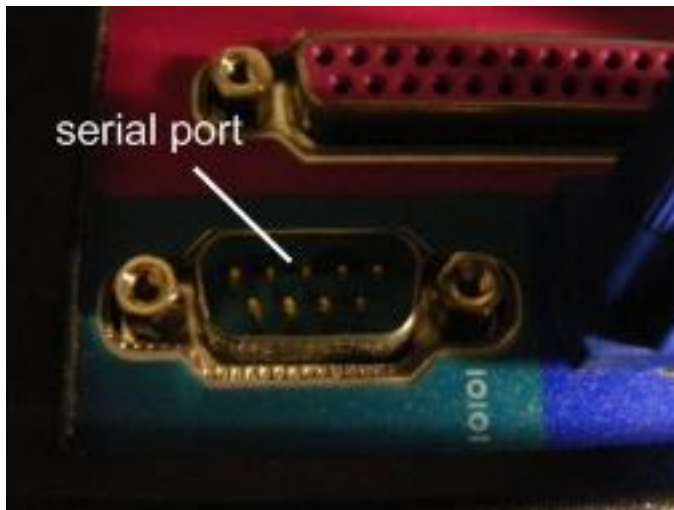
APG Vasario Series Installation Guide via Serial Connection



This document covers the installation of an
APG Vasario (Model # VBS484A-BL1915) via a serial connection.

Connecting the cash drawer to the computer

Note: Please have your computer turned off during these steps.

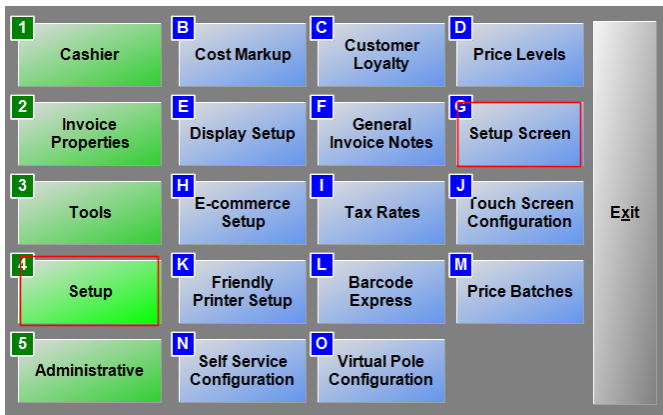


1. Find the serial port on your computer

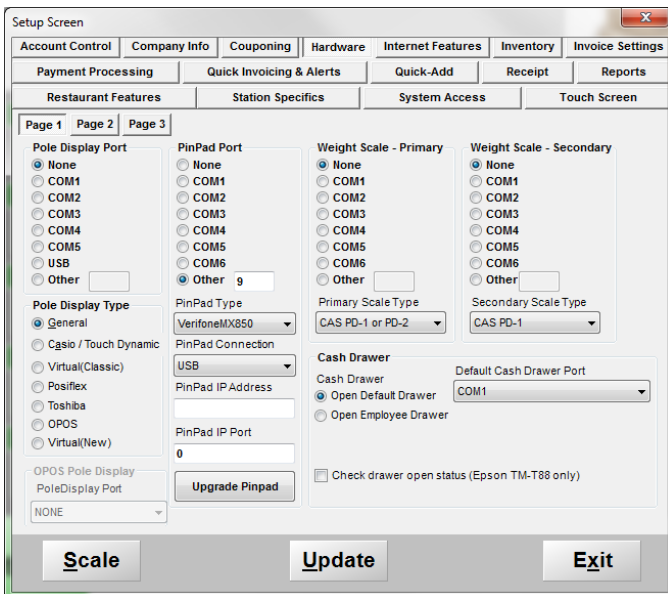


2. Plug the serial cable connected to the cash drawer into the port.

CRE/RPE Configuration

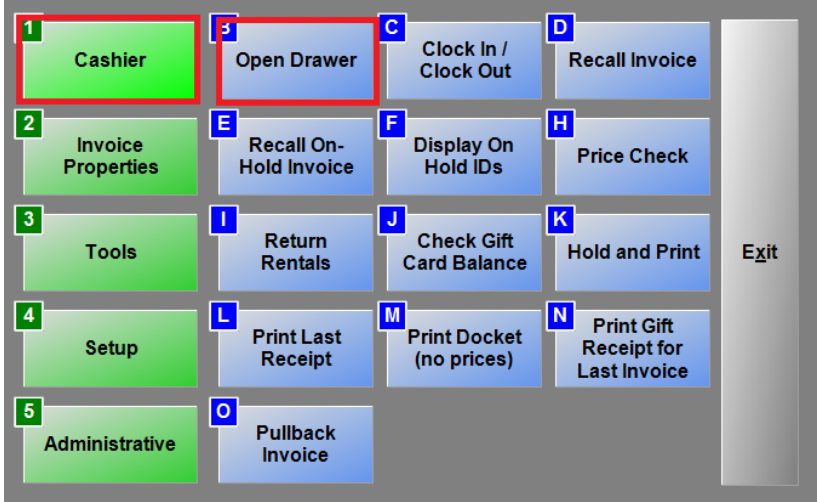


1. Select the **Manager** or **Options** button and enter the administrator password (default: admin) where applicable.
2. Select **Setup>Setup Screen**.



3. At the setup screen, select the **Hardware** tab
4. Under the **Cash Drawer** section, select **Open Default Drawer**
5. Under **Default Cash Drawer Port** use the drop down to select the COM Port your cash drawer is connected to.
6. To save changes, select **Update**

Testing Configuration



1	Cashier	S	Open Drawer	C	Clock In / Clock Out	D	Recall Invoice	Exit
2	Invoice Properties	E	Recall On-Hold Invoice	F	Display On Hold IDs	H	Price Check	
3	Tools	I	Return Rentals	J	Check Gift Card Balance	K	Hold and Print	
4	Setup	L	Print Last Receipt	M	Print Docket (no prices)	N	Print Gift Receipt for Last Invoice	
5	Administrative	O	Pullback Invoice					

7. Select the **Manager** or **Options** button and enter the administrator password (default: admin) where applicable.
8. Select **Cashier > Open Drawer**
 - This will send the command to open the drawer.